

NPY (Porcine) - EIA Kit

Catalog#	Standard size	Price	Order
EK-049-07	1 kit	\$420.00	<input type="button" value="ORDER"/>

Product description

More information

Normal Plasma Peptide/Protein Levels

Neuropeptide Y (NPY)

Protocol [Assay Protocol \(PDF\)](#)

Sample Preparation [Blood collection](#)
[Plasma extraction](#)
[Tissue extraction](#)
[CSF extraction](#)

Catalog # EK-049-07

Standard Size 96 wells

Sensitivity Minimum Detectable Concentration = 0.25ng/ml

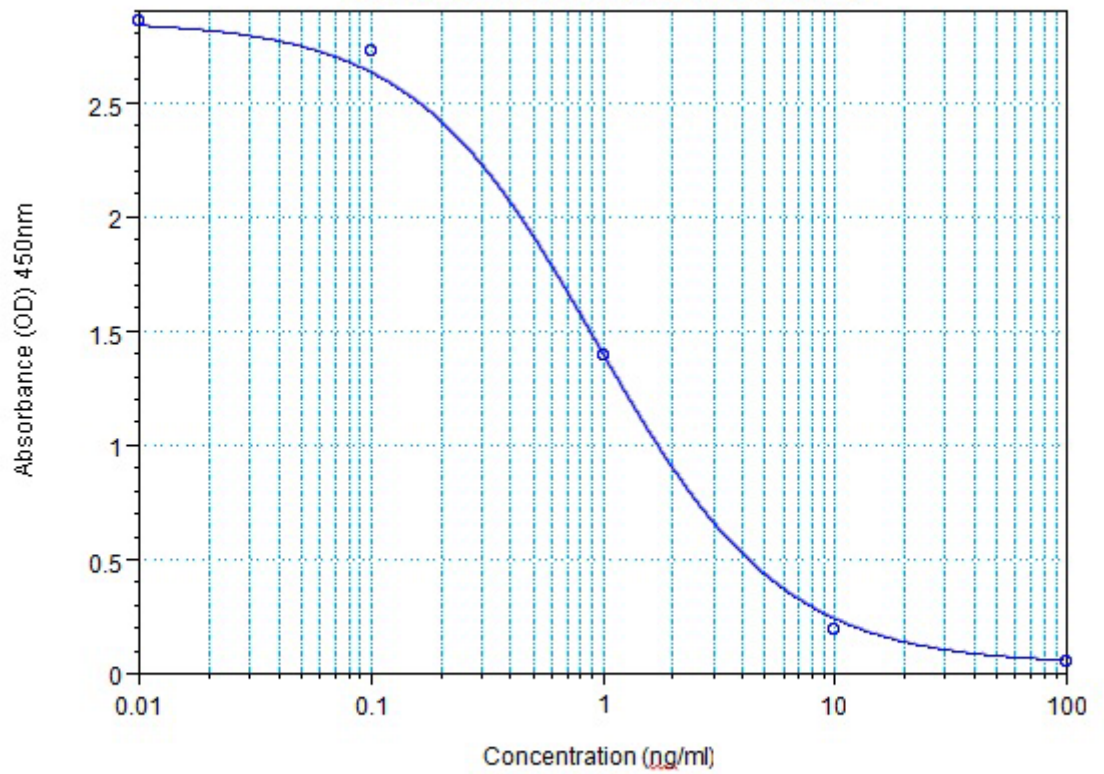
Range 0-100ng/ml

Linear Range 0.25-2.66ng/ml

Cross Reactivity	Peptide	% Cross-reactivity
	Neuropeptide Y (Porcine)	100
	Neuropeptide Y (Human, Rat)	100
	Neuropeptide Y (13-36) (Porcine)	23
	Neuropeptide Y (16-36) (Porcine)	16
	Neuropeptide Y (18-36) (Porcine)	5.28
	Neuropeptide Y (20-36) (Porcine)	7.32
	Neuropeptide Y (22-36) (Porcine)	1.5
	Neuropeptide Y (26-36) (Porcine)	0
	PYY (Porcine)	0
	Pancreatic Polypeptide (Human)	0
	VIP (Human, Rat, Porcine)	0
	Amylin (Human)	0
	Insulin (Human)	0
	Somatostatin	0

Sequence Tyr - Pro - Ser - Lys - Pro - Asp - Asn - Pro - Gly - Glu - Asp - Ala - Pro - Ala - Glu - Asp - Leu - Ala - Arg - Tyr - Tyr - Ser - Ala - Leu - Arg - His - Tyr - Ile - Asn - Leu - Ile - Thr - Arg - Gln - Arg - Tyr - NH₂

EK-049-07 Neuropeptide Y (Porcine)



Log-Logit Fit: $y = \frac{A-D}{1+(x/C)^B} + D$

o