

Growth Hormone Releasing Factor (GHRF) (Rat) - EIA Kit

Catalog#	Standard size	Price	Order
EK-031-19	1 kit	\$420.00	<input type="button" value="ORDER"/>

Product description

More information

References

Ghrelin Receptor Antagonist [D-lys3] / GHRP-6

Normal Plasma Peptide/Protein Levels

Protocol [Assay Protocol \(PDF\)](#)

Sample Preparation [Blood collection](#)
[Plasma extraction](#)
[Tissue extraction](#)
[CSF extraction](#)

Catalog # EK-031-19

Standard Size 96 wells

Sensitivity Minimum Detectable Concentration = 0.32ng/ml

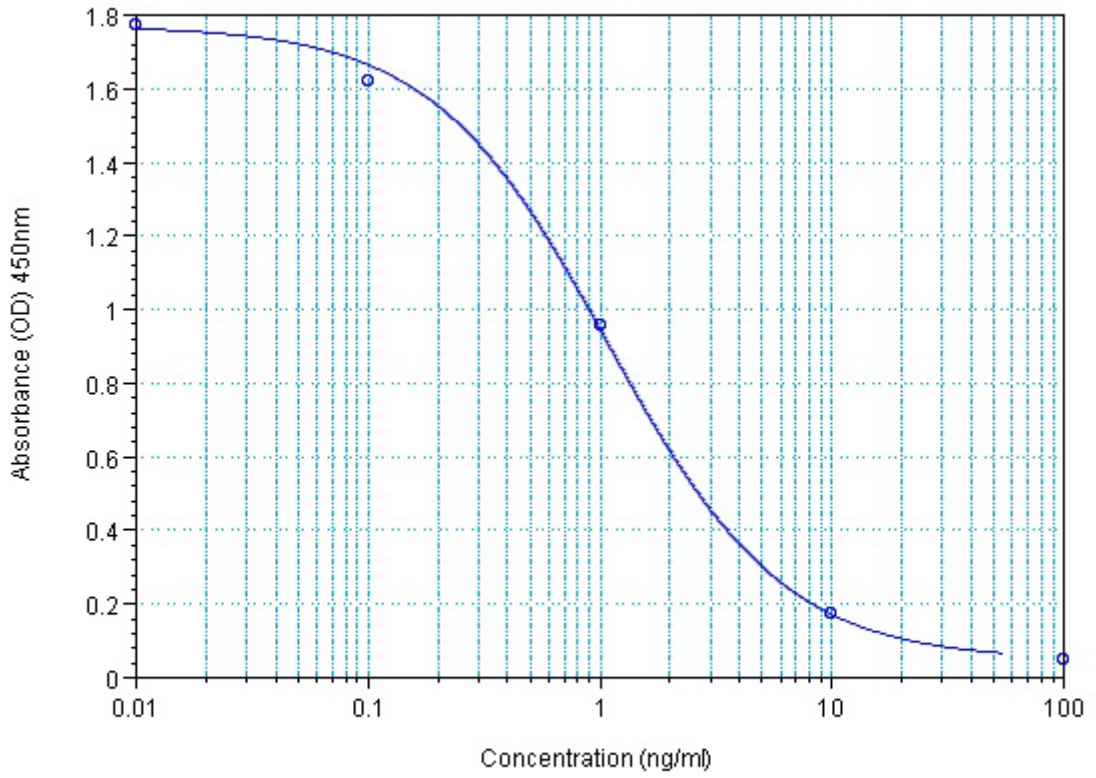
Range 0-100 ng/ml

Linear Range 0.32-3.81ng/ml

Cross Reactivity	Peptide	%Cross-reactivity
	Growth Hormone Releasing Factor (Rat)	100
	Growth Hormone Releasing Factor (Mouse)	20
	Growth Hormone Releasing Factor (Human)	3
	Growth Hormone Releasing Factor (Porcine)	0
	Parathyroid Hormone (PTH) (1-34) (Human)	0
	VIP (Human, Porcine, Rat)	0
	Ghrelin(Human)	0
	Ghrelin (Rat)	0

Sequence His - Ala - Asp - Ala - Ile - Phe - Thr - Ser - Ser - Tyr - Arg - Arg - Ile - Leu - Gly - Gln - Leu - Tyr - Ala - Arg - Lys - Leu - Leu - His - Glu - Ile - Met - Asn - Arg - Gln - Gln - Gly - Glu - Arg - Asn - Gln - Glu - Gln - Arg - Ser - Arg - Phe - Asn

EK-031-19 Growth Hormone Releasing Factor (GH-RF) (Rat)



Log-Logit Fit: $y = (A-D)/(1+(x/C)^B) + D$

o