

Endothelin-2 (ET-2) (Human, Canine) - EIA Kit

Catalog#	Standard size	Price	Order
EK-023-13	1 kit	\$420.00	<input type="button" value="ORDER"/>

Product description

More information

[Endothelin and Endothelin-like Peptides](#)

[Preproendothelin-2 \(Human\)](#)

[Normal Plasma Peptide/Protein Levels](#)

Protocol [Assay Protocol \(PDF\)](#)

Sample Preparation [Blood collection](#)
[Plasma extraction](#)
[Tissue extraction](#)
[CSF extraction](#)

Catalog # EK-023-13

Standard Size 96 wells

Sensitivity Minimum Detectable Concentration: 0.11 ng/ml

Range 0-25 ng/ml

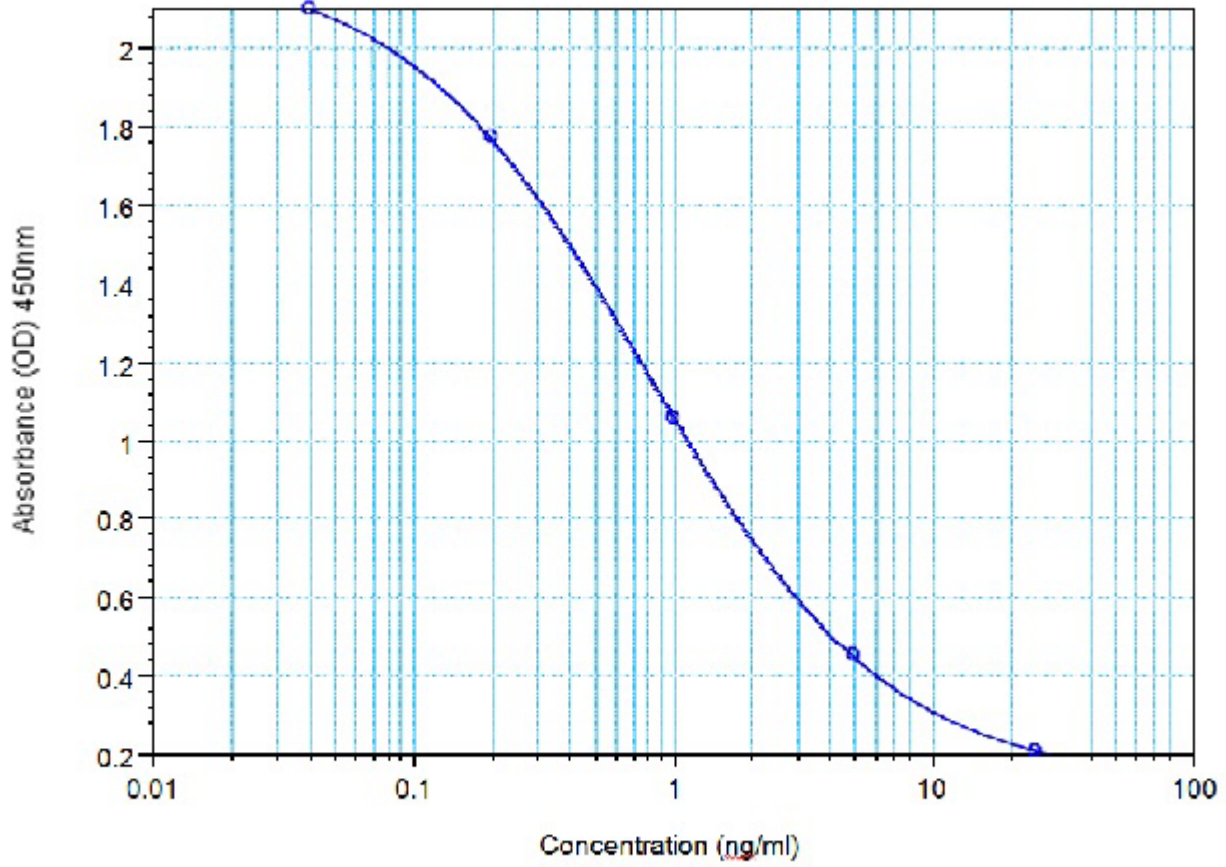
Linear Range 0.11-1.21 ng/ml

Cross Reactivity	Peptide	%Cross-reactivity
	Endothelin-2 (Human, Canine)	100
	Endothelin-1 (Human, Porcine, Rat)	100
	Endothelin-3 (Human, Porcine, Rabbit, Rat)	100
	Big Endothelin-1 (Porcine)	16
	Big Endothelin-1 (Human)	7
	VIC (Endothelin-Beta) (Mouse)	97.5
	BNP-26 (Porcine)	0
	Sarafotoxin S6b	0.01
	alpha-ANP (1-28) (Human, Canine)	0
	Angiotensin II (Human)	0

Sequence Cys - Ser - Cys - Ser - Ser - Trp - Leu - Asp - Lys - Glu - Cys - Val - Tyr - Phe - Cys - His - Leu - Asp - Ile - Ile - Trp

Disulfide Bridge: Cys1 - Cys15 and Cys3 - Cys11

EK-023-13 Endothelin-2 (ET-2)



4-P Fit $y = (A - D) / (1 + (x/C)^B) + D$

o