

CGRP (Human) - EIA Kit

Catalog#	Standard size	Price	Order
EK-015-02	1 kit	\$420.00	<input type="button" value="ORDER"/>

Product description

More information

References

Calcitonin Gene Related Peptide (CGRP)

Normal Plasma Peptide/Protein Levels

Protocol [Assay Protocol \(PDF\)](#)

Sample Preparation [Blood collection](#)
[Plasma extraction](#)
[Tissue extraction](#)
[CSF extraction](#)

Catalog # EK-015-02

Standard Size 96 wells

Sensitivity Minimum Detectable Concentration = 0.28ng/ml

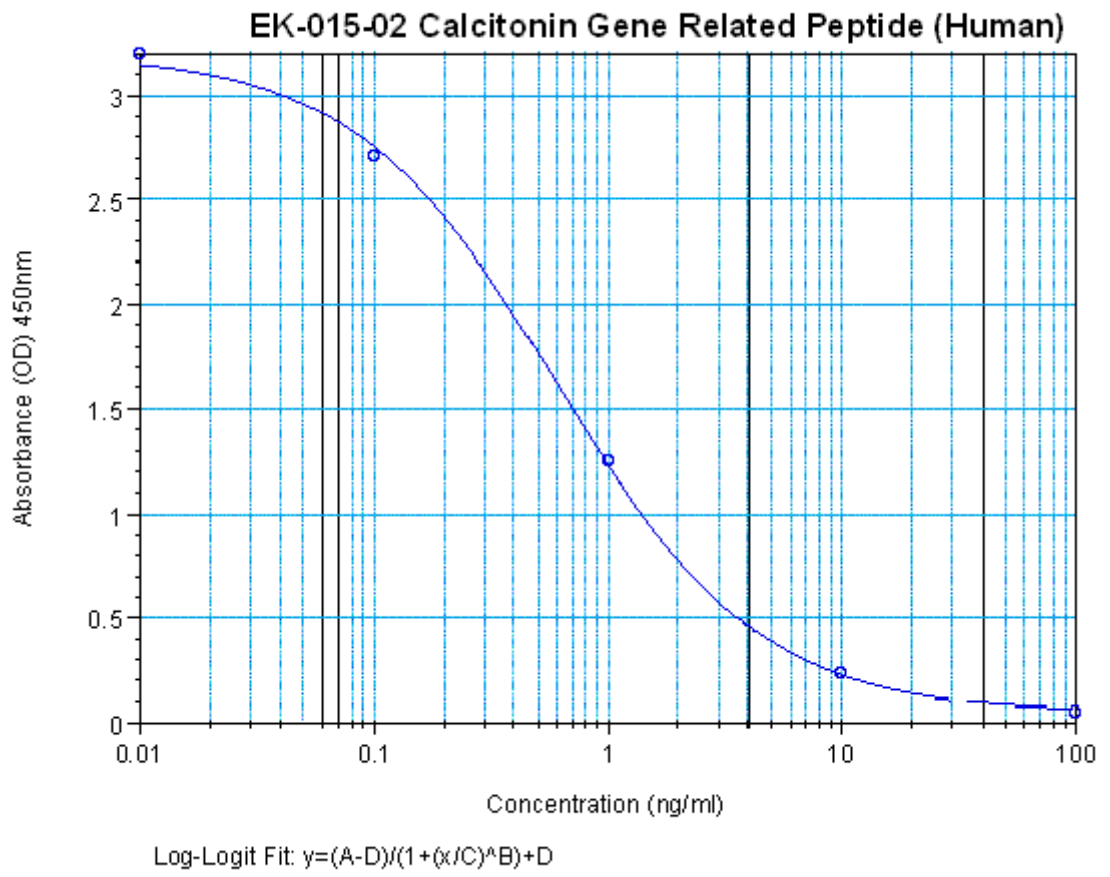
Range 0-100 ng/ml

Linear Range 0.28-3.38 ng/ml

Cross Reactivity	Peptide	%Cross-reactivity
	CGRP (Human)	100
	CGRP (8-37) (Human)	100
	CGRP (Chicken)	100
	CGRP (Rat)	100
	CGRP II (Human)	100
	CGRP II (Rat)	100
	Calcitonin (Human)	0
	CAP (Rat)	0
	Amylin (Human)	0
	Amylin Amide (Human)	0
	Amylin (Rat)	0
	Substance P	0

Sequence Ala - Cys - Asp - Thr - Ala - Thr - Cys - Val - Thr - His - Arg - Leu - Ala - Gly - Leu - Leu - Ser - Arg - Ser - Gly - Gly - Val - Val - Lys - Asn - Asn - Phe - Val - Pro - Thr - Asn - Val - Gly - Ser - Lys - Ala - Phe - NH₂

Disulfide Bridge: Cys2 - Cys7



o