

# Calcitonin (Rat) - EIA Kit

Catalog#	Standard size	Price	Order
EK-014-06	1 kit	\$420.00	<input type="button" value="ORDER"/>

## Product description

## More information

Calcitonin Receptor-Stimulating Peptide (CRSP)

Normal Plasma Peptide/Protein Levels

**Protocol** [Assay Protocol \(PDF\)](#)

**Sample Preparation** [Blood collection](#)  
[Plasma extraction](#)  
[Tissue extraction](#)  
[CSF extraction](#)

**Catalog #** EK-014-06

**Standard Size** 96 wells

**Sensitivity** Minimum Detectable Concentration = 0.27ng/ml

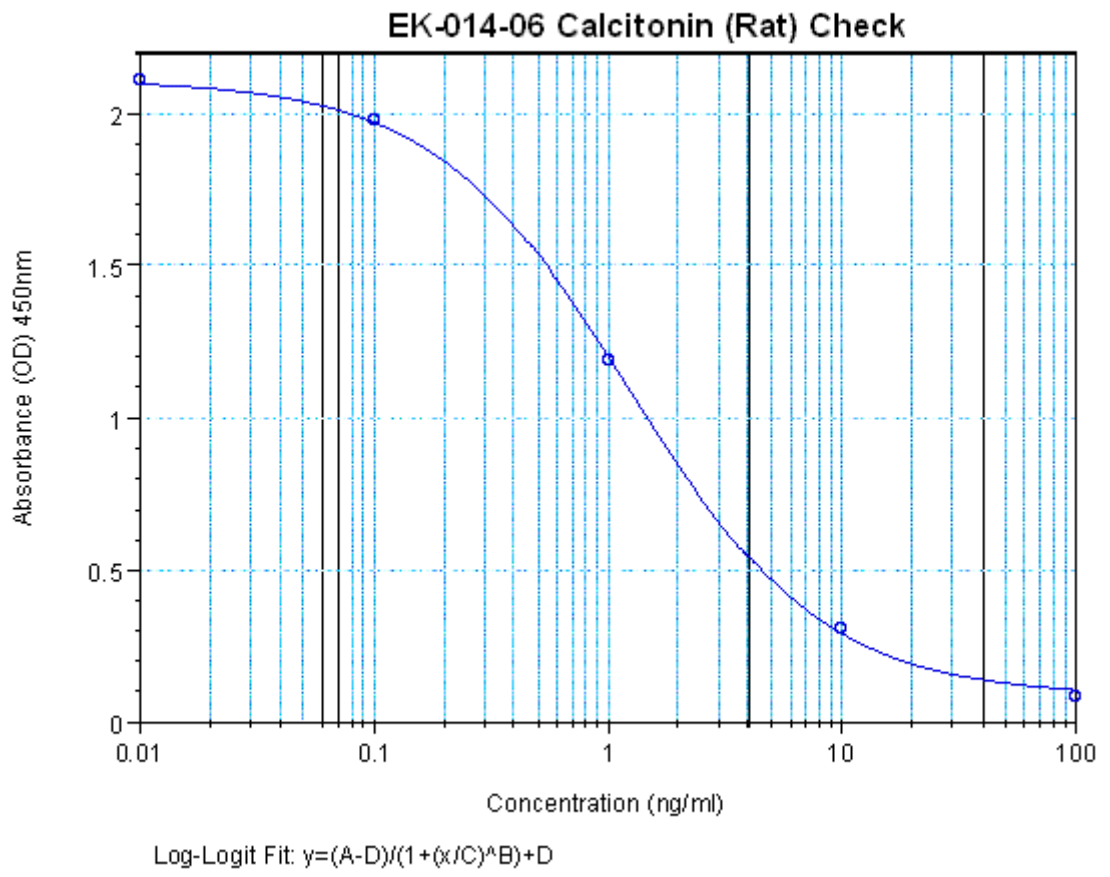
**Range** 0-100 ng/ml

**Linear Range** 0.27-6.2ng/ml

<b>Cross Reactivity</b>	<b>Peptide</b>	<b>%Cross-reactivity</b>
	Calcitonin (Rat)	100
	Calcitonin (Human)	80
	Calcitonin (Mouse)	33
	Calcitonin (Salmon)	0
	Calcitonin (Eel)	0
	Calcitonin (Chicken)	0
	Calcitonin C-Terminal Adjacent Peptide (Rat)	0
	CGRP (Human)	0
	CGRP (Rat)	0

**Sequence** Cys - Gly - Asn - Leu - Ser - Thr - Cys - Met - Leu - Gly - Thr - Tyr - Thr - Gln - Asp - Leu - Asn - Lys - Phe - His - Thr - Phe - Pro - Gln - Thr - Ser - Ile - Gly - Val - Gly - Ala - Pro - NH<sub>2</sub>

**Disulfide Bridge:** Cys1 - Cys7



o