

# Calcitonin (Human, Monkey) - EIA Kit

|           |               |          |                                      |
|-----------|---------------|----------|--------------------------------------|
| Catalog#  | Standard size | Price    | Order                                |
| EK-014-03 | 1 kit         | \$420.00 | <input type="button" value="ORDER"/> |

## Product description

## More information

Calcitonin Receptor-Stimulating Peptide (CRSP)

Normal Plasma Peptide/Protein Levels

**Protocol** [Assay Protocol \(PDF\)](#)

**Sample Preparation** [Blood collection](#)  
[Plasma extraction](#)  
[Tissue extraction](#)  
[CSF extraction](#)

**Catalog #** EK-014-03

**Standard Size** 96 wells

**Sensitivity** Minimum Detectable Concentration = 0.1ng/ml

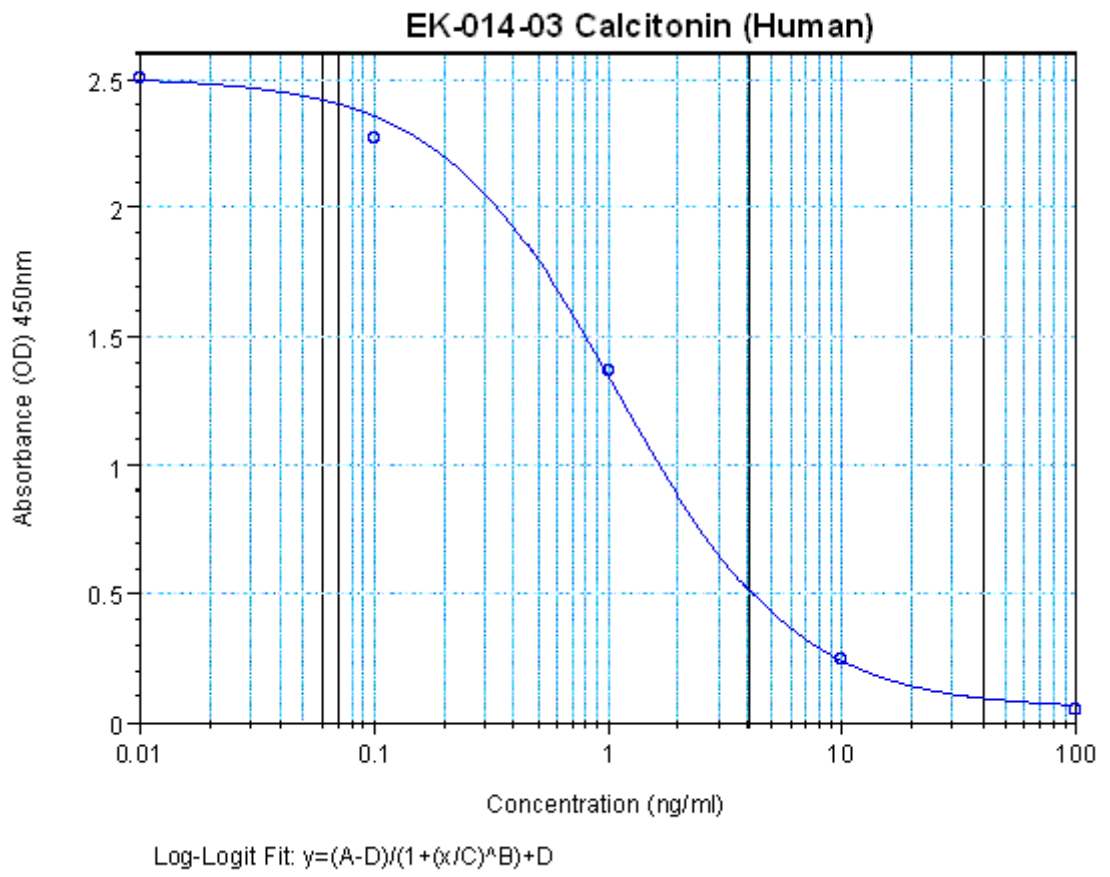
**Range** 0-100 ng/ml

**Linear Range** 0.1-1.34 ng/ml

| <b>Cross Reactivity</b> | <b>Peptide</b>       | <b>%Cross-reactivity</b> |
|-------------------------|----------------------|--------------------------|
|                         | Calcitonin (Human)   | 100                      |
|                         | Calcitonin (Rat)     | 16                       |
|                         | Calcitonin (Porcine) | 0                        |
|                         | Calcitonin (Eel)     | 0                        |
|                         | Calcitonin (Salmon)  | 0                        |
|                         | CGRP (Human)         | 0                        |
|                         | CGRP (Rat)           | 0                        |
|                         | Katacalcin (PDN-21)  | 0                        |
|                         | Amylin (Human)       | 0                        |

**Sequence** Cys - Gly - Asn - Leu - Ser - Thr - Cys - Met - Leu - Gly - Thr - Tyr - Thr - Gln - Asp - Phe - Asn - Lys - Phe - His - Thr - Phe - Pro - Gln - Thr - Ala - Ile - Gly - Val - Gly - Ala - Pro - NH<sub>2</sub>

**Disulfide Bridge:** Cys1 - Cys7



o