

# CNP-22 (Human, Rat, Mouse, Porcine) - EIA Kit

Catalog#	Standard size	Price	Order
EK-012-03	1 kit	\$420.00	<input type="button" value="ORDER"/>

- Product description
- More information
- References

C-type Natriuretic Peptides

Normal Plasma Peptide/Protein Levels

**Protocol**      [Assay Protocol \(PDF\)](#)

**Sample Preparation**      [Blood collection](#)  
[Plasma extraction](#)  
[Tissue extraction](#)  
[CSF extraction](#)

**Catalog #**      EK-012-03

**Standard Size**      96 wells

**Sensitivity**      Minimum Detectable Concentration = 0.07 ng/ml

**Range**      0-100 ng/ml

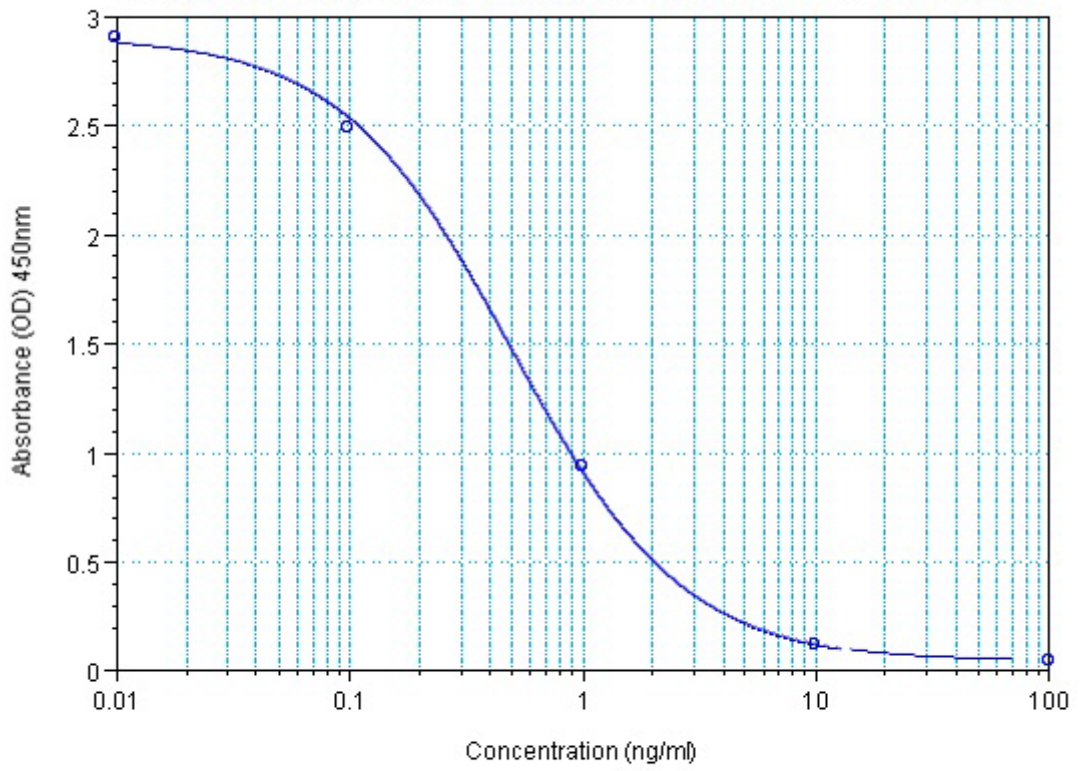
**Linear Range**      0.07-1.23 ng/ml

<b>Cross Reactivity</b>	<b>Peptide</b>	<b>%Cross-reactivity</b>
	CNP-22 (Human, Rat, Porcine)	100
	CNP-53 (Rat, Porcine)	100
	CNP-53 (1-29) (Rat, Porcine)	0
	α-ANP (1-28) (Human, Canine, Porcine, Bovine)	0
	ANF (Rat, Rabbit, Mouse)	0
	BNP-32 (Porcine)	0
	BNP-45 (Rat)	0
	Pro-BNP (22-46) (Human)	0
	Pro-BNP (47-76) (Human)	0
	Pro-BNP (1-46) (Human)	0
	N-Terminal Prepro-BNP(1-76)(Human)	0
	Endothelin-1 (Human, Rat, Porcine, Mouse, Canine, Bovine)	0
	Substance P	0
	DNP	0
	Urodilatin	8.47

**Sequence**      Gly - Leu - Ser - Lys - Gly - Cys - Phe - Gly - Leu - Lys - Leu - Asp - Arg - Ile - Gly - Ser - Met - Ser - Gly - Leu - Gly - Cys

**Disulfide Bridge:** Cys6 - Cys22

### EK-012-03 CNP-22 (Human, Rat, Mouse, Porcine) Standard Curve



Log-Logit Fit:  $y=(A-D)/(1+(x/C)^B)+D$