

# Neuropeptide W-23 (NPW-23) (Rat, Mouse) - EIA Kit

Catalog#	Standard size	Price	Order
EK-005-61	1 kit	\$420.00	<input type="button" value="ORDER"/>

## Product description

## More information

Neuropeptide B (NPB) and Neuropeptide W (NPW)

**Protocol** [Assay Protocol \(PDF\)](#)

**Sample Preparation**  
[Blood collection](#)  
[Plasma extraction](#)  
[Tissue extraction](#)  
[CSF extraction](#)

**Catalog #** EK-005-61

**Sensitivity** Minimum Detectable Concentration = 0.2 ng/ml

**Range** 0-100ng/ml

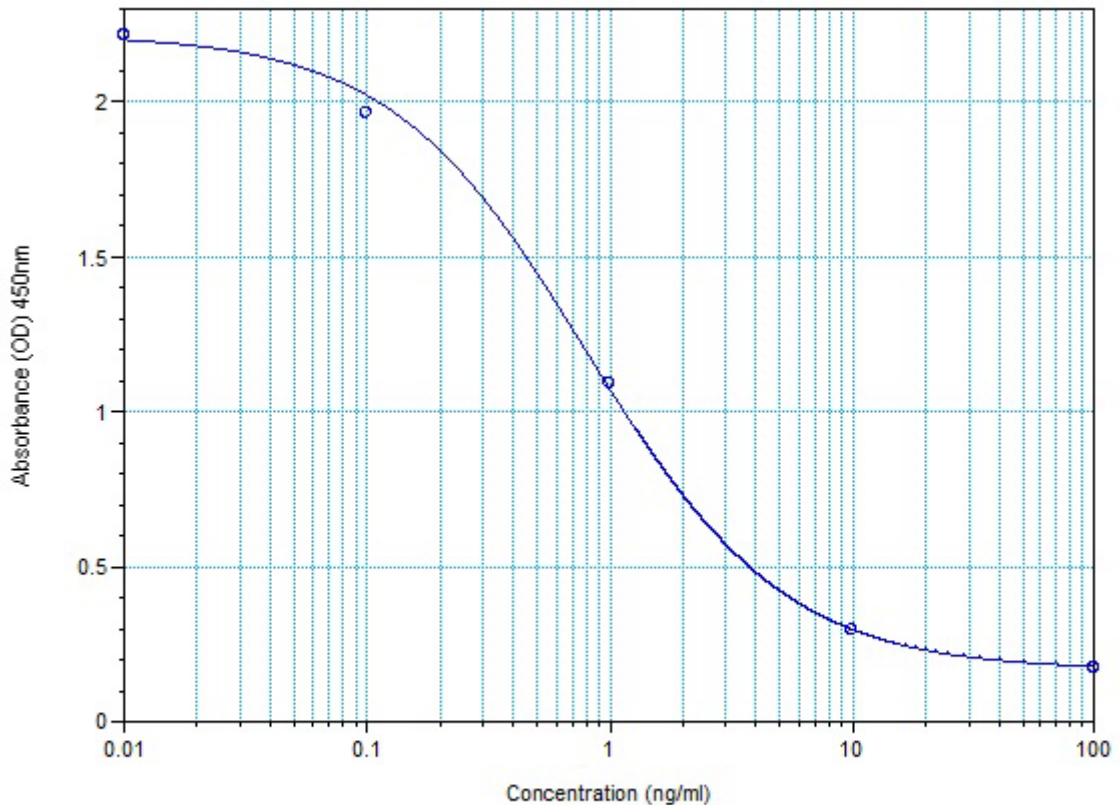
**Linear Range** 0.2-5.07 ng/ml

Cross Reactivity	Peptide	% Cross-reactivity
	NPW-23 (Rat, Mouse)	100
	NPW-23 Des-Br (Human)	1
	NPW-23 (Human)	1
	AGRP (83-132)-Amide (Human)	0
	NPY (Human, Rat, Mouse)	0
	Orexin A (Human, Rat, Mouse, Porcine, Bovine, Ovine)	0
	Orexin B (Human)	0
	MCH (Human, Rat, Mouse)	0
	alpha-MSH (Human, Rat, Mouse)	0
	Ghrelin (Rat, Mouse)	0
	Ghrelin (Human)	0

**Sequence** Trp - Tyr - Lys - His - Val - Ala - Ser - Pro - Arg - Tyr - His - Thr - Val - Gly - Arg - Ala - Ser - Gly - Leu - Leu - Met - Gly - Leu - NH<sub>2</sub>

Standard Curve Image

EK-005-61 Neuropeptide W-23 (Rat, Mouse) Standard Curve



$$y = \frac{A-D}{1+(x/C)^B} + D$$
 Legend:  $\bullet$  Std (Standards: Concentration vs MeanValue)
 

A	B	C	D	R <sup>2</sup>
2.219	1.073	0.805	0.167	0.996

Copyright © 2012 PHOENIX PHARMACEUTICALS, INC.