

Neuropeptide B-29 (NPB-29) (Rat) - EIA Kit

Catalog#	Standard size	Price	Order
EK-005-56	1 kit	\$420.00	<input type="button" value="ORDER"/>

Product description

More information

Neuropeptide B (NPB) and Neuropeptide W (NPW)

Protocol [Assay Protocol \(PDF\)](#)

Sample Preparation [Blood collection](#)
[Plasma extraction](#)
[Tissue extraction](#)
[CSF extraction](#)

Catalog # EK-005-56

Standard Size 96 wells

Sensitivity Minimum Detectable Concentration = 0.11 ng/ml

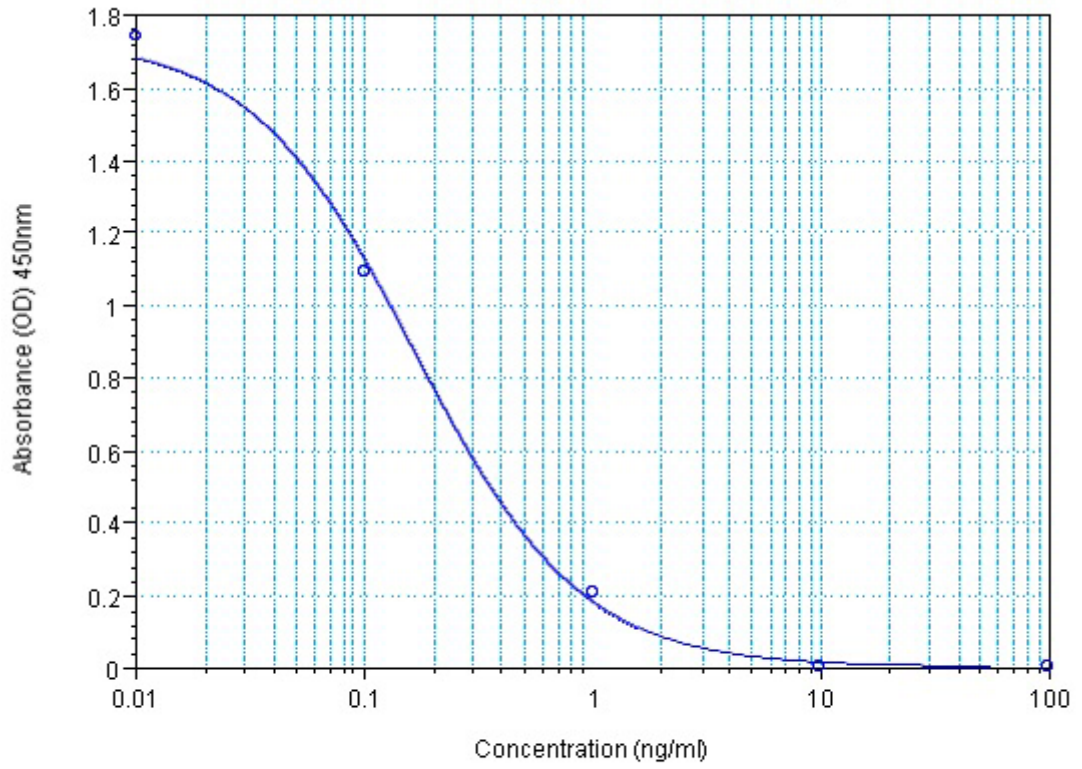
Range 0-100 ng/ml

Linear Range 0.11-1.27 ng/ml

Cross Reactivity	Peptide	%Cross-reactivity
	NPB-29 (Rat)	100
	NPB-29 (Mouse)	100
	NPW-23 (Rat)	11
	NPW-23 Des-Br (Human)	11
	NPW-23 (Porcine)	0
	NPW-30 (Human)	0
	NPB-29 (Rat)	0
	AGRP (83-132)-NH2 (Human)	0
	NPY (Human, Rat)	0
	Orexin A	0
	Orexin B	0
	MCH	0
	α -MSH	0
	Ghrelin (Rat)	0
	Ghrelin (Human)	0

Sequence (6 - Br - Trp) - Tyr - Lys - Pro - Ala - Ala - Gly - Ser - His - His - Tyr - Ser - Val - Gly - Arg - Ala - Ala - Gly - Leu - Leu - Ser - Ser - Phe - His - Arg - Phe - Pro - Ser - Thr

EK 005-56 Neuropeptide B-29 (NPB-29)



Log-Logit Fit: $y = (A - D) / (1 + (x/C)^B) + D$

o