

Neuropeptide B-29 (NPB-29) (Human) - EIA Kit

Catalog#	Standard size	Price	Order
EK-005-51	1 kit	\$420.00	<input type="button" value="ORDER"/>

Product description

More information

Neuropeptide B (NPB) and Neuropeptide W (NPW)

Protocol [Assay Protocol \(PDF\)](#)

Sample Preparation [Blood collection](#)
[Plasma extraction](#)
[Tissue extraction](#)
[CSF extraction](#)

Catalog # EK-005-51

Standard Size 96 wells

Sensitivity Minimum Detectable Concentration = 0.22 ng/ml

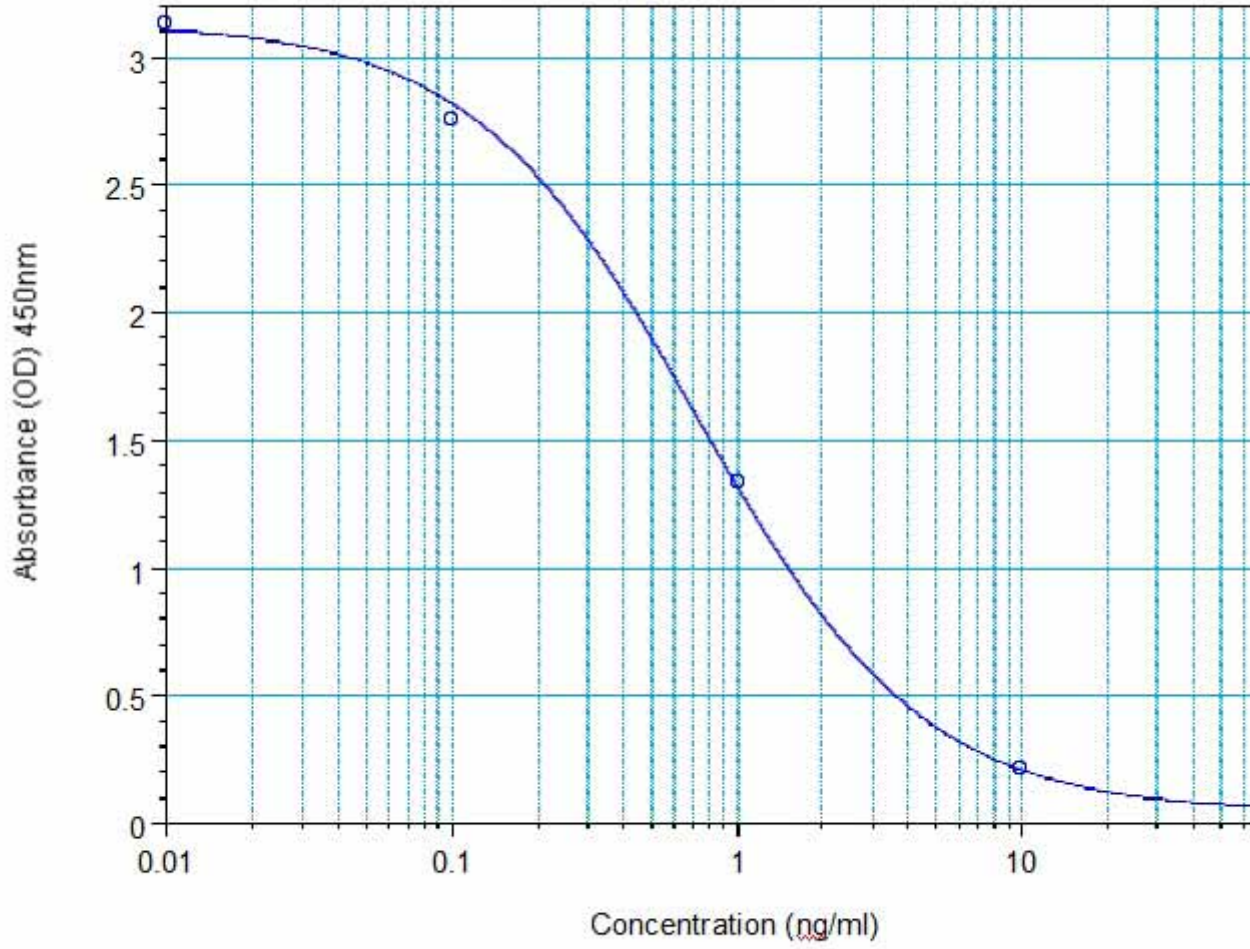
Range 0-100 ng/ml

Linear Range 0.22-2.76 ng/ml

Cross Reactivity	Peptide	%Cross-reactivity
	NPB-29 (Human)	100
	NPW-30 (Human)	0.1
	NPW-23 (Rat)	0.1
	NPB-29 (Rat)	0
	NPW-23 (Porcine)	0
	AGRP (83-132)-NH2 (Human)	0
	NPY (Human, Rat)	0
	Orexin A	0
	Orexin B	0
	MCH	0
	α-MSH	0
	Ghrelin (Rat)	0
	Ghrelin (Human)	0

Sequence (6 - Br - Trp) - Tyr - Lys - Pro - Ala - Ala - Gly - His - Ser - Ser - Tyr - Ser - Val - Gly - Arg - Ala - Ala - Gly - Leu - Lys - Ser - Pro - Tyr - Ala

EK-005-51 Neuropeptide B-29 (NPB-29) (Human)



Log-Logit Fit: $y = \frac{A-D}{1+(x/C)^B} + D$

o