

CART (61-102) (Human, Rat, Mouse, Bovine) - EIA Kit

Catalog#	Standard size	Price	Order
EK-003-61	1 kit	\$420.00	<input type="button" value="ORDER"/>

Product description

More information

[Cocaine and Amphetamine-Regulated Transcript \(CART\) Protein Precursor Schematic \(Human\)](#)

[CART Preprohormone Schematic \(Rat\)](#)

[Prepro-CART Sequence \(Rat\)](#)

Protocol [Assay Protocol \(PDF\)](#)

Sample Preparation [Blood collection](#)
[Plasma extraction](#)
[Tissue extraction](#)
[CSF extraction](#)

Catalog # EK-003-61

Standard Size 96 wells

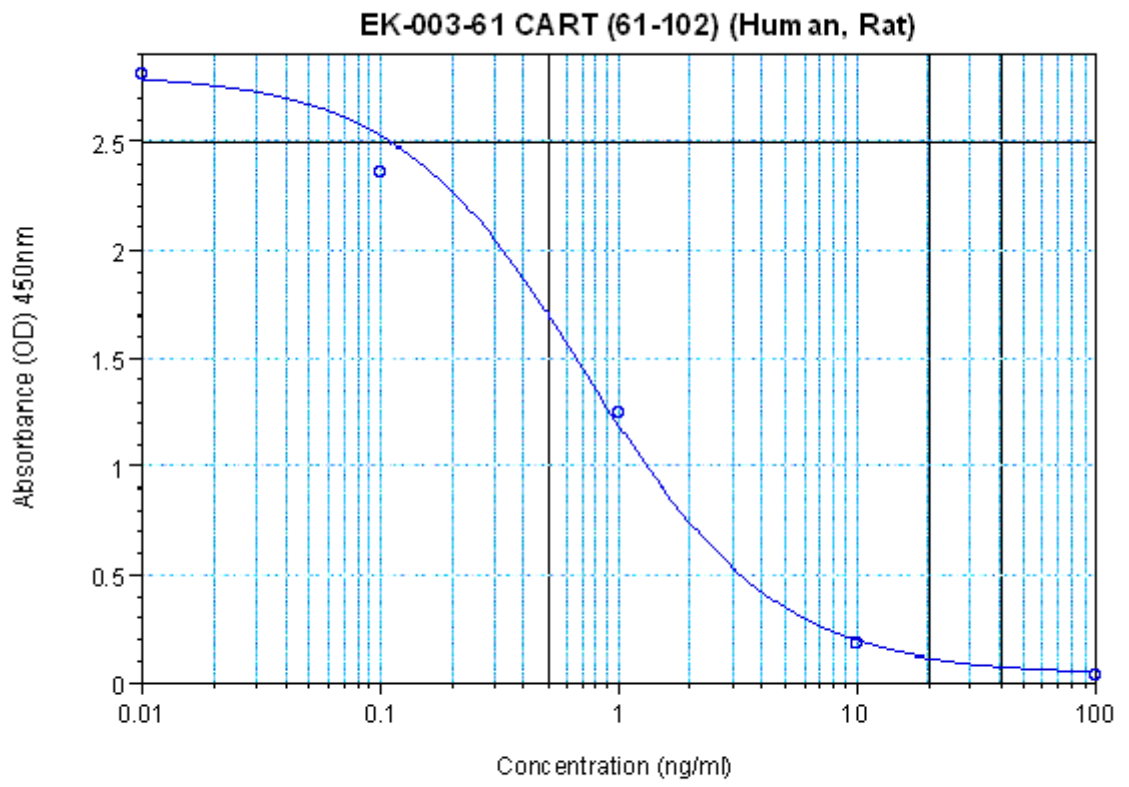
Sensitivity Minimum Detectable Concentration = 0.32 ng/ml

Range 0-100 ng/ml

Linear Range 0.32 4.55ng/ml

Cross Reactivity	Peptide	%Cross-reactivity
	CART (66-102) (Human, Rat, Mouse)	100
	Agouti-Related Protein(83-132)-NH ₂ (Human)	0
	Leptin (Human)	0
	MCH (Human)	0
	Neuropeptide Y	0
	α-MSH	0
	Orexin A (Human, Mouse, Rat)	0
	Orexin B (Human)	0

Sequence Lys - Tyr - Gly - Gln - Val - Pro - Met - Cys - Asp - Ala - Gly - Glu - Gln - Cys - Ala - Val - Arg - Lys - Gly - Ala - Arg - Ile - Gly - Lys - Leu - Cys - Asp - Cys - Pro - Arg - Gly - Thr - Ser - Cys - Asn - Ser - Phe - Leu - Leu - Lys - Cys - Leu



Log-Logit Fit: $y=(A-D)/(1+(x/C)^B)+D$

○