

Product Number **Z011**  
Revision Number **RN2.0**

**Product Name** Z-(**D**)-DON-Val-Pro-Leu-OMe, "Z-(**D**)-DON"  
This compound is **1,000 fold less potent** than the parent molecule Z-DON-VPL-OMe (Z006)

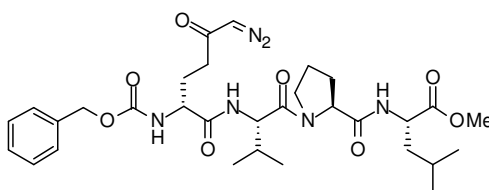
**Quantity** 10 mg

**Application** Biochemical control to Z-DON-VPL-OMe (Z006)  
IC<sub>50</sub> ~ 20.000 nM (compared to 20 nM for Z-DON-VPL-OMe)

**Molecular Formula** C<sub>31</sub>H<sub>44</sub>N<sub>6</sub>O<sub>8</sub>

**Molecular Weight** 628.72

**Chemical Structure**



**Purity by HPLC** >90 % (214 nm)

**Solubility** 100 µM in 2% (v/v) DMSO or 2% (v/v) Ethanol / aqueous buffers.  
Pre-dissolve e.g. 3.14 mg (5 µmol) in 1 ml DMSO or 1 ml Ethanol - dilute by adding 49 ml buffer to obtain a 100 µM solution.

**Appearance** Pale yellow solid

**Storage** Store at -20 °C, desiccate

**Related Products** Z006 Z-DON-Val-Pro-Leu-OMe (active L-isomer of Z011)

**Reference(s)** None yet

**NOTE** INTENDED FOR RESEARCH USE ONLY, NOT FOR USE IN HUMAN, THERAPEUTIC OR DIAGNOSTIC APPLICATIONS.