

Product Datasheet

LC3C/MAP1LC3C Antibody

NBP2-36664

Unit Size: 100 ul

Store at 4C short term. Aliquot and store at -20C long term. Avoid freeze-thaw cycles.

www.novusbio.com



support@novusbio.com

Protocols, Publications, Related Products, Reviews, Research Tools and Images at:
www.novusbio.com/NBP2-36664

Updated 2/5/2015 v.20.1

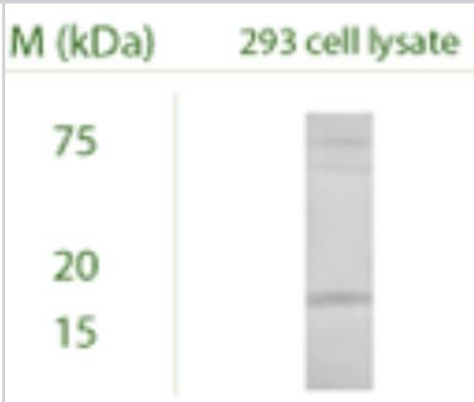
NBP2-36664

LC3C/MAP1LC3C Antibody

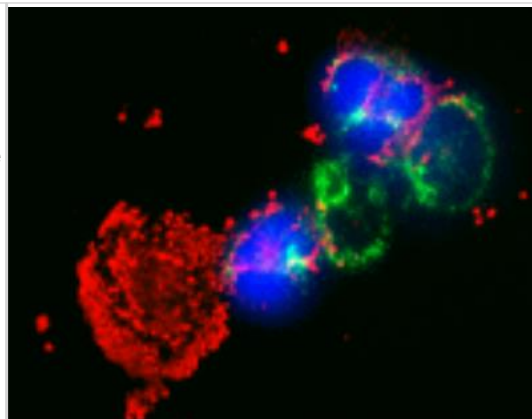
Product Information	
Unit Size	100 ul
Concentration	This product is unpurified. The exact concentration of antibody is not quantifiable.
Storage	Store at 4C short term. Aliquot and store at -20C long term. Avoid freeze-thaw cycles.
Clonality	Polyclonal
Preservative	No Preservative
Reconstitution Instructions	Reconstitute in 100 ul of sterile water.
Purity	Whole antisera
Target Molecular Weight	17 kDa

Product Description	
Host	Rabbit
Gene ID	440738
Gene Symbol	MAP1LC3C
Species	Human
Species Reactivity	Human, other species have not yet been tested.
Specificity/Sensitivity	IHC and WB confirmed the specificity for MAP1LC3 C (MAP1LC3C, APG8c). This should recognise MAP1LC3 C only and not the other forms MAP1LC3A and MAP1LC3B.
Immunogen	A synthetic peptide corresponding to the N-terminal of human MAP1LC3 C conjugated to Blue Carrier Protein has been used as the immunogen. The peptide is homologous with the corresponding sequence derived from MAP1LC3 C protein in <i>Macaca mulatta</i> (monkey) and <i>Canis familiaris</i> (dog).

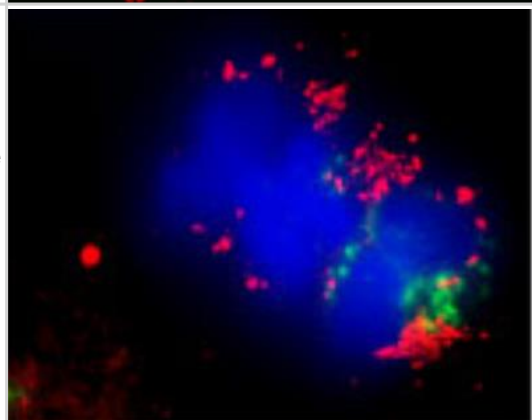
Product Application Details	
Applications	Western Blot, Immunocytochemistry/Immunofluorescence, Immunohistochemistry
Recommended Dilutions	Immunocytochemistry/Immunofluorescence 1:100-1:1000, Immunohistochemistry 1:100-1:1000, Western Blot 1:100-1:1000

Images	
Western Blot: LC3C/MAP1LC3C Antibody [NBP2-36664] - Western blot under reducing conditions on 293 cell lysate using Rabbit antibody to MAP1LC3 C : whole serum at a dilution of 1:100.	 <p>M (kDa) 293 cell lysate</p> <p>75</p> <p>20</p> <p>15</p>

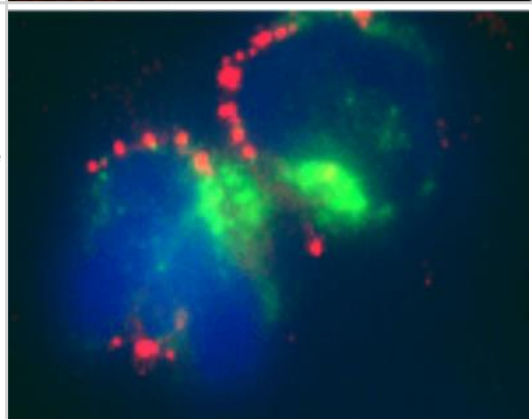
Immunocytochemistry/Immunofluorescence: LC3C/MAP1LC3C Antibody [NBP2-36664] - Confocal microscopy on immunofluorescently detected MAP1LC3 C in cytospin-isolated human white blood cells using Rabbit antibody to MAP1LC3 C : whole serum at a dilution of 1: 200, incubated for 1 h at room temperature. The detected MAP1LC3 C appears red. The cells were also stained for Myeloperoxidase (MPO) appearing in green. The cells were counter stained with Hoechst Dye (blue colour). Here, the merged picture is presented.



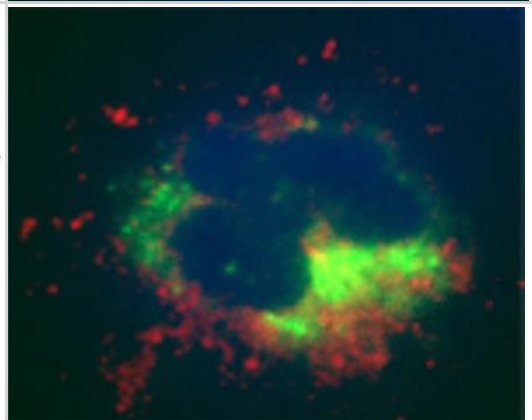
Immunocytochemistry/Immunofluorescence: LC3C/MAP1LC3C Antibody [NBP2-36664] - Confocal microscopy on immunofluorescently detected MAP1LC3 C in cytospin-isolated human white blood cells using Rabbit antibody to MAP1LC3 C : whole serum at a dilution of 1: 200, incubated for 1 h at room temperature. The detected MAP1LC3 C appears red. The cells were also stained for Myeloperoxidase (MPO) appearing in green. The cells were counter stained with Hoechst Dye (blue colour). Here, the merged picture is presented.



Immunocytochemistry/Immunofluorescence: LC3C/MAP1LC3C Antibody [NBP2-36664] - Confocal microscopy on immunofluorescently detected MAP1LC3 C in cytospin-isolated human white blood cells using Rabbit antibody to MAP1LC3 C : whole serum at a dilution of 1: 200, incubated for 1 h at room temperature. The detected MAP1LC3 C appears red. The cells were also stained for Myeloperoxidase (MPO) appearing in green. The cells were counter stained with Hoechst Dye (blue colour). Here, the merged picture is presented.



Immunocytochemistry/Immunofluorescence: LC3C/MAP1LC3C Antibody [NBP2-36664] - Confocal microscopy on immunofluorescently detected MAP1LC3 C in cytospin-isolated human white blood cells using Rabbit antibody to MAP1LC3 C : whole serum at a dilution of 1: 200, incubated for 1 h at room temperature. The detected MAP1LC3 C appears red. The cells were also stained for Myeloperoxidase (MPO) appearing in green. The cells were counter stained with Hoechst Dye (blue colour). Here, the merged picture is presented.





Novus Biologicals USA

8100 Southpark Way, A-8
Littleton, CO 80120
USA
Phone: 303.730.1950
Toll Free: 1.888.506.6887
Fax: 303.730.1966
novus@novusbio.com

Novus Biologicals Canada

461 North Service Road West, Unit B37
Oakville, ON L6M 2V5
Canada
Phone: 905.827.6400
Toll Free: 855.668.8722
Fax: 905.827.6402
canada@novusbio.com

Novus Biologicals Europe

19 Barton Lane
Abingdon Science Park
Abingdon, OX14 3NB, United Kingdom
Phone: (44) (0) 1235 529449
Free Phone: 0800 37 34 15
Fax: (44) (0) 1235 533420
info@bio-techne.com

General Contact Information

www.novusbio.com
Technical Support: technical@novusbio.com
Orders: orders@novusbio.com
General: novus@novusbio.com

Products Related to NBP2-36664

NBP2-33376H	Blue Marker Antibody (6F4-F6) [HRP]
NB7160	Goat anti-Rabbit IgG Antibody [HRP]
H00440738-P01-10ug	LC3C/MAP1LC3C Recombinant Protein
H00440738-T01	LC3C/MAP1LC3C Overexpression Lysate (Denatured)

Limitations

This product is for research use only and is not approved for use in humans or in clinical diagnosis. Primary Antibodies are guaranteed for 1 year from date of receipt.

For more information on our guarantee, please visit www.novusbio.com/guarantee.

