

NBP2-26293**Human TLR6 Stable Cell Line****Unit Size**

1 Vial

Storage

Store in gas phase of liquid nitrogen.

Target Species

Human

Growth Properties

Adherent Morphology: Epithelial

Applications

WB, FLOW

Host

HEK293

Reconstitution Instructions

Complete Growth Medium: DMEM with 4.5 g/L glucose + 10% FBS + 4 mM L-glutamine + 1 mM sodium pyruvate + 100 units/ml penicillin + 100 ug/ml streptomycin + 10 ug/ml blasticidin.

Selection Agent

Blasticidin.

Specificity/Sensitivity

TLR6

Immunogen

TLR6 stable cell line is a stably transfected cell line which expresses full-length human Toll-like receptor 6 (TLR6) with an N-terminal HA tag.

Recommended Dilutions

Flow Cytometry, Western Blot

BufferContents: 3-4 x 10⁶ cells

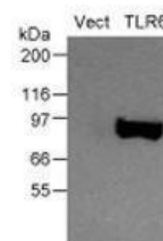
Biosafety Level: 2

Application Notes

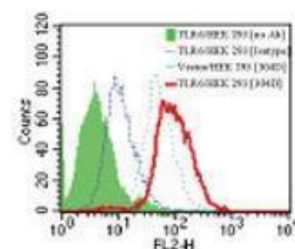
The TLR6 stable cell line can be used for TLR6 flow cytometric calibration and detection control. TLR6 expression has been validated by Western blotting (fig. 1) and flow cytometry (fig. 2).

Images

Western Blot: Human TLR6 Stable Cell Line [NBP2-26293] - Analysis of TLR6 expression in the TLR6 stable cell line using an HA antibody (20 ug total protein/lane). Legend. Vect: Vector control stable cell line; TLR6: TLR6 stable cell line.



Flow Cytometry: Human TLR6 Stable Cell Line [NBP2-26293] - Analysis of TLR6 expression in the TLR6 stable cell line. Cell surface expression of TLR6 was analyzed by flow cytometry using a PE-conjugated TLR6 antibody and compared with the Vector control stable cell line. mouse IgG1 isotype control and Cell Surface TLR Staining Flow Kit were used for this test. *Note: An endogenous level of TLR6 is... See more at www.novusbio.com/NBP2-26293

**Notes**

Assume all cultures are hazardous since they may harbor latent viruses or other organisms that are uncharacterized. The following safety precautions should be observed.

- Use pipette aids to prevent ingestion and keep aerosols down to a minimum.
- No eating, drinking or smoking while handling the stable line.
- Wash hands after handling the stable line and before leaving the lab.

Updated 12/27/2013 3.0

This product is for research use only and is not approved for use in humans or in clinical diagnosis. Reporter Cell Lines are guaranteed for 1 year from date of receipt.

Novus USA

p) 888-506-6887
 p) 303-730-1950
 f) 303-730-1966
novus@novusbio.com

Novus Canada

p) 855-668-8722
 p) 905-827-6400
 f) 905-827-6402
canada@novusbio.com

Novus Europe

UK: p) +44 (0)1223 426 001 f) +44 (0)871 971 1635
 DE: p) +49 (0)800 723 5208 f) +49 (0)800 589 2679
 IT: p) +39 02 4032 6786 f) +39 02 4032 6340
 FR: p) +33 (0)1 76 77 45 30 f) +33 (0)1 76 77 45 31
europe@novusbio.com

www.novusbio.com/guarantee