

**NBP2-26286****Mouse TLR11 Stable Cell Line****Unit Size**

1 Vial

**Storage**

Store in gas phase of liquid nitrogen.

**Target Species**

Mouse

**Growth Properties**

Adherent

Morphology: Epithelial

**Applications**

WB, FLOW

**Host**

HEK293

**Reconstitution Instructions**

Complete Growth Medium: DMEM with 4.5 g/L glucose + 10% FBS + 4 mM L-glutamine + 1 mM sodium pyruvate + 100 units/ml penicillin + 100 ug/ml streptomycin + 10 ug/ml blasticidin.

**Selection Agent**

Blasticidin

**Specificity/Sensitivity**

TLR11

**Immunogen**

The TLR11 stable cell line is a stably transfected cell line which expresses full-length mouse Toll-like receptor 11 (TLR11) with an N-terminal HA tag.

**Recommended Dilutions**

Flow Cytometry, Western Blot

**Buffer**Contents: 3-4 x 10<sup>6</sup> cells

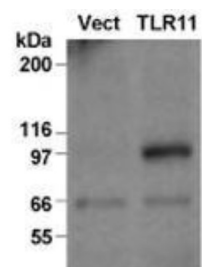
Biosafety Level: 2

**Application Notes**

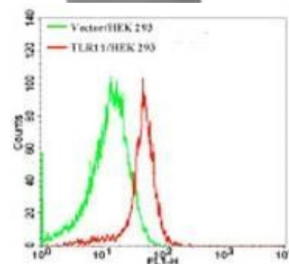
The TLR11 stable cell line can be used for TLR11 flow cytometric calibration, detection control and TLR11-based functional studies. TLR11 expression in this cell line has been validated by Western blotting and flow cytometry. TLR11 expression in this cell line has been validated by Western blotting (Fig. 1) and flow cytometry (Fig. 2).

**Images**

Western Blot: Mouse TLR11 Stable Cell Line [NBP2-26286] - Analysis of TLR11 expression in the TLR11 stable cell line using an HA antibody (20 ug total protein/lane). Legend. Vect: Vector control stable cell line; TLR11: TLR11 stable cell line.



Flow Cytometry: Mouse TLR11 Stable Cell Line [NBP2-26286] - Expression of TLR11 in the TLR11 stable cell line was analyzed by flow cytometry using a FITC-conjugated TLR11 antibody and compared with the Vector control stable cell line. Flow samples were prepared using Intracellular TLR Staining Flow Kit.

**Notes**

Assume all cultures are hazardous since they may harbor latent viruses or other organisms that are uncharacterized. The following safety precautions should be observed.

- Use pipette aids to prevent ingestion and keep aerosols down to a minimum.
- No eating, drinking or smoking while handling the stable cell line.
- Wash hands after handling the stable cell line and before leaving t... See more at [www.novusbio.com/NBP2-26286](http://www.novusbio.com/NBP2-26286)

Updated 12/27/2013 3.0

This product is for research use only and is not approved for use in humans or in clinical diagnosis. Reporter Cell Lines are guaranteed for 1 year from date of receipt.

**Novus USA**

p) 888-506-6887  
 p) 303-730-1950  
 f) 303-730-1966  
[novus@novusbio.com](mailto:novus@novusbio.com)

**Novus Canada**

p) 855-668-8722  
 p) 905-827-6400  
 f) 905-827-6402  
[canada@novusbio.com](mailto:canada@novusbio.com)

**Novus Europe**

UK: p) +44 (0)1223 426 001 f) +44 (0)871 971 1635  
 DE: p) +49 (0)800 723 5208 f) +49 (0)800 589 2679  
 IT: p) +39 02 4032 6786 f) +39 02 4032 6340  
 FR: p) +33 (0)1 76 77 45 30 f) +33 (0)1 76 77 45 31  
[europe@novusbio.com](mailto:europe@novusbio.com)

[www.novusbio.com/guarantee](http://www.novusbio.com/guarantee)