

NBP2-26271**Human TLR8 Stable Cell Line****Unit Size**

1 Vial

Storage

Store in gas phase of liquid nitrogen.

Target Species

Human

Growth Properties

Adherent Morphology: Epithelial

Applications

WB, FLOW

Host

HEK293

Reconstitution Instructions

Growth Medium: DMEM with 4.5 g/L glucose + 10% FBS + 4 mM L-glutamine + 1 mM sodium pyruvate + 100 units/ml penicillin + 100 ug/ml streptomycin + 10 ug/ml blasticidin.

Selection Agent

Blasticidin

Specificity/Sensitivity

TLR8

Immunogen

The TLR8 stable cell line is a stably transfected cell line which expresses full-length human Toll-like receptor 8 (TLR8) with an N-terminal HA tag.

Recommended Dilutions

Flow Cytometry, Western Blot

BufferContents: 3-4 x 10⁶ cells

Biosafety Level: 2

Application Notes

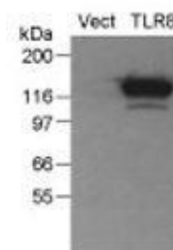
The TLR8 stable cell line can be used for TLR8 flow cytometric calibration and detection control as well as TLR8-dependent functional assays. TLR8 expression in this cell line has been validated by Western blotting (fig. 1) and flow cytometry (fig. 2). Functional activity of this cell line has been validated by the NF-κB/SEAPorter™ Assay Kit (NBP2-25286, fig. 3).

References

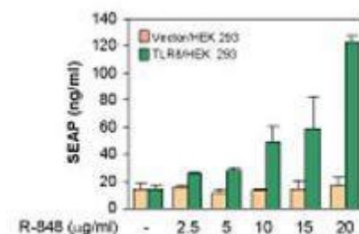
Feng D, Sangster-Guity N, Stone R et al. Differential requirement of histone acetylase and deacetylase activities for IRF5-mediated proinflammatory cytokine expression. J Immunol. 2010 Nov 15 [PMID: 20935208]

Images (more available at www.novusbio.com/NBP2-26271)

Western Blot: Human TLR8 Stable Cell Line [NBP2-26271] - analysis of TLR8 expression in the TLR8 stable cell line using an HA antibody (20 ug total protein/lane). Legend. Vect: Vector control stable cell line; TLR8: TLR8 stable cell line.



Flow Cytometry: Human TLR8 Stable Cell Line [NBP2-26271] - analysis of the TLR8 stable cell line. The assay was performed using the NF-κB SEAPorter™ Assay Kit. The Vector stable cell line and TLR8 stable cell line were transfected with NF-κB/SEAP reporter plasmid for 16 h. Cells were stimulated with Imidazoquinoline resiquimod R-848 for 24 h followed by SEAP assay.

**Notes**

Assume all cultures are hazardous since they may harbor latent viruses or other organisms that are uncharacterized. The following safety precautions should be observed.

- Use pipette aids to prevent ingestion and keep aerosols down to a minimum.
- No eating, drinking or smoking while handling the stable line.
- Wash hands after handling the stable line and before leaving the lab.
- ... See more at www.novusbio.com/NBP2-26271

Updated 12/27/2013 3.0

This product is for research use only and is not approved for use in humans or in clinical diagnosis. Reporter Cell Lines are guaranteed for 1 year from date of receipt.

Novus USA

p) 888-506-6887

p) 303-730-1950

f) 303-730-1966

novus@novusbio.com**Novus Canada**

p) 855-668-8722

p) 905-827-6400

f) 905-827-6402

canada@novusbio.com**Novus Europe**

UK: p) +44 (0)1223 426 001 f) +44 (0)871 971 1635

DE: p) +49 (0)800 723 5208 f) +49 (0)800 589 2679

IT: p) +39 02 4032 6786 f) +39 02 4032 6340

FR: p) +33 (0)1 76 77 45 30 f) +33 (0)1 76 77 45 31

europe@novusbio.com