

NBP2-26269**Human TLR5 Stable Cell Line****Unit Size**

1 Vial

Storage

Store in gas phase of liquid nitrogen.

Target Species

Human

Growth Properties

Adherent

Morphology: Epithelial

Applications

WB, FLOW, Func

Host

HEK293

Reconstitution Instructions

Growth Medium: DMEM with 4.5 g/L glucose + 10% FBS + 4 mM L-glutamine + 1 mM sodium pyruvate + 100 units/ml penicillin + 100 ug/ml streptomycin + 10 ug/ml blasticidin.

Selection Agent

Blasticidin

Specificity/Sensitivity

TLR5

Immunogen

TLR5 stable cell line is a stably transfected cell line which expresses full-length human Toll-like receptor 5 (TLR5) with an N-terminal HA tag.

Recommended Dilutions

Flow Cytometry, Functional, Western Blot

BufferContents: 3-4 x 10⁶ cells

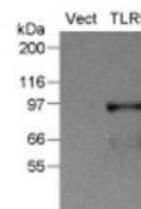
Biosafety Level: 2

Application Notes

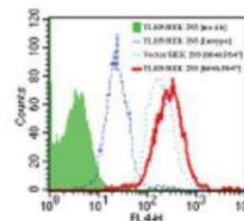
The TLR5 stable cell line can be used for TLR5 flow cytometric calibration and detection control as well as TLR5-dependent functional assays. TLR5 expression in this stable cell line has been validated by Western blotting (fig. 1) and flow cytometry (fig. 2). Functional activity of this stable cell line has been validated by the NF- κ B/SEAPorter™ Assay Kit (NBP2-25286, fig. 3).

Images (more available at www.novusbio.com/NBP2-26269)

Western Blot: Human TLR5 Stable Cell Line [NBP2-26269] - analysis of TLR5 expression in the TLR5 stable cell line using an HA antibody (20 ug total protein/lane). Legend. Vect: Vector control stable cell line (NBP2-26259); TLR5: TLR5 stable cell line.



Flow Cytometry: Human TLR5 Stable Cell Line [NBP2-26269] - Flow analysis of TLR5 expression in the TLR5 stable cell line. Cell surface expression of TLR5 in the TLR5 stable cell line was analyzed by flow cytometry using an Alexa Fluor 647-conjugated TLR5 antibody (NBP2-24785) and compared with the Vector control stable cell line (NBP2-26259). A mouse IgG2a isotype control and our Cell Surface TLR... See more at www.novusbio.com/NBP2-26269

**Notes**

Assume all cultures are hazardous since they may harbor latent viruses or other organisms that are uncharacterized. The following safety precautions should be observed.

- Use pipette aids to prevent ingestion and keep aerosols down to a minimum.
- No eating, drinking or smoking while handling the stable line.
- Wash hands after handling the stable line and before leaving the lab.

Updated 12/27/2013 3.0

This product is for research use only and is not approved for use in humans or in clinical diagnosis. Reporter Cell Lines are guaranteed for 1 year from date of receipt.

Novus USA

p) 888-506-6887
 p) 303-730-1950
 f) 303-730-1966
novus@novusbio.com

Novus Canada

p) 855-668-8722
 p) 905-827-6400
 f) 905-827-6402
canada@novusbio.com

Novus Europe

UK: p) +44 (0)1223 426 001 f) +44 (0)871 971 1635
 DE: p) +49 (0)800 723 5208 f) +49 (0)800 589 2679
 IT: p) +39 02 4032 6786 f) +39 02 4032 6340
 FR: p) +33 (0)1 76 77 45 30 f) +33 (0)1 76 77 45 31
europe@novusbio.com

