

**NBP2-26267****Human TLR3 Stable Cell Line****Unit Size**

1 Vial

**Storage**

Store in gas phase of liquid nitrogen.

**Target Species**

Human

**Growth Properties**

Adherent Morphology: Epithelial

**Applications**

WB, FLOW, Func

**Host**

HEK293

**Reconstitution Instructions**

Complete Growth Medium: DMEM with 4.5 g/L glucose + 10% FBS + 4 mM L-glutamine + 1 mM sodium pyruvate + 100 units/ml penicillin + 100 ug/ml streptomycin + 10 ug/ml blasticidin.

**Selection Agent**

Blasticidin

**Specificity/Sensitivity**

TLR3

**Immunogen**

The TLR3 stable cell line is a stably transfected cell line which expresses full-length human Toll-like receptor 3 (TLR3) with an N-terminal HA tag.

**Recommended Dilutions**

Flow Cytometry, Functional, Western Blot

**Buffer**Contents: 3-4 x 10<sup>6</sup> cells

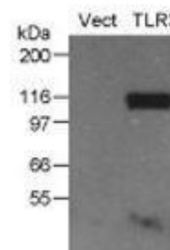
Biosafety Level: 2

**Application Notes**

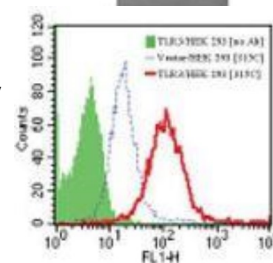
The TLR3 stable cell line can be used for TLR3 flow cytometric calibration and detection control as well as TLR3-dependent functional assays. TLR3 expression in this stable cell line has been validated by Western blotting (Fig. 1) and flow cytometry (Fig. 2). Functional activity of this stable cell line has been validated using the NF- $\kappa$ B/SEAPorte™ Assay Kit (NBP2-25286 Fig. 3).

**Images (more available at [www.novusbio.com/NBP2-26267](http://www.novusbio.com/NBP2-26267))**

Western Blot: Human TLR3 Stable Cell Line [NBP2-26267] - Analysis of TLR3 expression in the TLR3 stable cell line using an HA antibody (20 ug total protein/lane). Legend. Vect: Vector control stable cell line; TLR3: TLR3 stable cell line.



Flow Cytometry: Human TLR3 Stable Cell Line [NBP2-26267] - Analysis of TLR3 expression in the TLR3 stable cell line. Intracellular expression of TLR3 in the TLR3 stable cell line was analyzed by flow cytometry using a FITC-conjugated TLR3 antibody and compared with the Vector control stable cell line. Intracellular TLR Staining Flow Kit was used for this test.

**Notes**

Assume all cultures are hazardous since they may harbor latent viruses or other organisms that are uncharacterized. The following safety precautions should be observed.

- Use pipette aids to prevent ingestion and keep aerosols down to a minimum.
- No eating, drinking or smoking while handling the stable line.
- Wash hands after handling the stable line and before leaving the lab.

Updated 12/27/2013 3.0

This product is for research use only and is not approved for use in humans or in clinical diagnosis. Reporter Cell Lines are guaranteed for 1 year from date of receipt.

**Novus USA**

p) 888-506-6887  
 p) 303-730-1950  
 f) 303-730-1966  
[novus@novusbio.com](mailto:novus@novusbio.com)

**Novus Canada**

p) 855-668-8722  
 p) 905-827-6400  
 f) 905-827-6402  
[canada@novusbio.com](mailto:canada@novusbio.com)

**Novus Europe**

UK: p) +44 (0)1223 426 001 f) +44 (0)871 971 1635  
 DE: p) +49 (0)800 723 5208 f) +49 (0)800 589 2679  
 IT: p) +39 02 4032 6786 f) +39 02 4032 6340  
 FR: p) +33 (0)1 76 77 45 30 f) +33 (0)1 76 77 45 31  
[europe@novusbio.com](mailto:europe@novusbio.com)

