

NBP2-26266**Human TLR2 Stable Cell Line****Unit Size**

1 Vial

Storage

Store in gas phase of liquid nitrogen.

Target Species

Human

Growth Properties

Adherent

Morphology: Epithelial

Applications

WB, FLOW, Func

Host

HEK293

Reconstitution Instructions

Complete Growth Medium: DMEM with 4.5 g/L glucose + 10% FBS + 4 mM L-glutamine + 1 mM sodium pyruvate + 100 units/ml penicillin + 100 ug/ml streptomycin + 10 ug/ml blasticidin.

Selection Agent

Blasticidin

Specificity/Sensitivity

TLR2

Immunogen

The TLR2 stable cell line is a stably transfected cell line which expresses full-length human Toll-like receptor 2 (TLR2) with an N-terminal HA tag.

Recommended Dilutions

Flow Cytometry, Functional, Western Blot

BufferContents: 3-4 x 10⁶ cells

Biosafety Level: 2

Application Notes

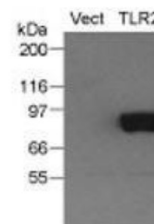
The TLR2 stable cell line can be used for TLR2 flow cytometric calibration and detection control as well as TLR2-dependent functional assays. TLR2 expression in these cells has been validated by Western blotting (fig. 1) and flow cytometry (fig. 2). Functional activity of this cell line has been validated using the NF-κB/SEAPorter™ Assay Kit (NBP2-25286, fig. 3).

References

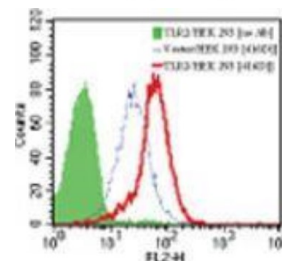
Mukherjee S, Biswas R, Biswas T. Alternative TLRs are stimulated by bacterial ligand to induce TLR2-unresponsive colon cell response. Cell Signal. 2013 Aug [PMID: 23665374]

Images (more available at www.novusbio.com/NBP2-26266)

Western Blot: Human TLR2 Stable Cell Line [NBP2-26266] - TLR2 expression in the TLR2 stable cell line using an HA antibody (20 ug total protein/lane). Legend. Vect: Vector/HEK 293 TLR2: TLR2 stable cell line.



Flow Cytometry: Human TLR2 Stable Cell Line [NBP2-26266] - Surface expression of TLR2 in the TLR2 stable cell line was analyzed by flow cytometry using a PE-conjugated TLR2 antibody and compared with the Vector/HEK 293 control. Surface TLR2 Staining Flow Kit was used for this test.

**Notes**

Assume all cultures are hazardous since they may harbor latent viruses or other organisms that are uncharacterized. The following safety precautions should be observed.

- Use pipette aids to prevent ingestion and keep aerosols down to a minimum.
- No eating, drinking or smoking while handling the TLR2 stable line.
- Wash hands after handling the TLR2 stable line and before leaving t... See more at www.novusbio.com/NBP2-26266

Updated 12/27/2013 3.0

This product is for research use only and is not approved for use in humans or in clinical diagnosis. Reporter Cell Lines are guaranteed for 1 year from date of receipt.

Novus USA

p) 888-506-6887
 p) 303-730-1950
 f) 303-730-1966
novus@novusbio.com

Novus Canada

p) 855-668-8722
 p) 905-827-6400
 f) 905-827-6402
canada@novusbio.com

Novus Europe

UK: p) +44 (0)1223 426 001 f) +44 (0)871 971 1635
 DE: p) +49 (0)800 723 5208 f) +49 (0)800 589 2679
 IT: p) +39 02 4032 6786 f) +39 02 4032 6340
 FR: p) +33 (0)1 76 77 45 30 f) +33 (0)1 76 77 45 31
europe@novusbio.com

www.novusbio.com/guarantee