

**NBP2-26265****Human TLR10 Stable Cell Line****Unit Size**

1 Vial

**Storage**

Store in gas phase of liquid nitrogen.

**Target Species**

Human

**Growth Properties**

Adherent Morphology: Epithelial

**Applications**

WB, FLOW

**Host**

HEK293

**Reconstitution Instructions**

Complete Growth Medium: DMEM with 4.5 g/L glucose + 10% FBS + 4 mM L-glutamine + 1 mM sodium pyruvate + 100 units/ml penicillin + 100 ug/ml streptomycin + 10 ug/ml blasticidin.

**Selection Agent**

Blasticidin

**Specificity/Sensitivity**

TLR10

**Immunogen**

The TLR10 stable cell line is a stably transfected cell line which expresses full-length human Toll-like receptor 10 (TLR10) with an N-terminal HA tag.

**Recommended Dilutions**

Flow Cytometry, Western Blot

**Buffer**

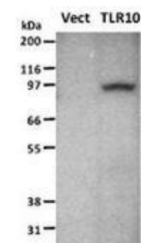
Contents: 3-4 x 10<sup>6</sup> cells  
 Biosafety Level: 2

**Application Notes**

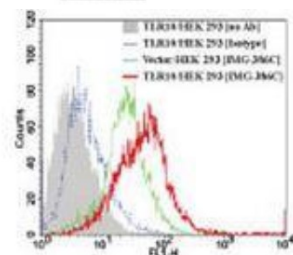
The TLR10 stable cell line can be used for TLR10 flow cytometric calibration and detection control. TLR10 expression in this cell line has been validated by Western blotting (Fig. 2) and flow cytometry (Fig. 1).

**Images**

Western Blot: Human TLR10 Stable Cell Line [NBP2-26265] - TLR10 expression in the TLR10 stable cell line using an HA antibody (20 ug total protein/lane). Legend. Vect: Vector control stable cell line; TLR10: TLR10 stable cell line.



Flow Cytometry: Human TLR10 Stable Cell Line [NBP2-26265] - Flow analysis of TLR10 expression in the TLR10 stable cell line. Cell surface expression of TLR10 in the TLR10 stable cell line was analyzed by flow cytometry using a FITC-conjugated TLR10 antibody and compared with the Vector control stable cell line. Mouse IgG1 isotype control and Cell Surface TLR Staining Flow Kit were used for this t... See more at [www.novusbio.com/NBP2-26265](http://www.novusbio.com/NBP2-26265)

**Notes**

Assume all cultures are hazardous since they may harbor latent viruses or other organisms that are uncharacterized. The following safety precautions should be observed.

- Use pipette aids to prevent ingestion and keep aerosols down to a minimum.
- No eating, drinking or smoking while handling the stable line.
- Wash hands after handling the stable line and before leaving the lab.

Updated 12/27/2013 3.0

This product is for research use only and is not approved for use in humans or in clinical diagnosis. Reporter Cell Lines are guaranteed for 1 year from date of receipt.

**Novus USA**

p) 888-506-6887  
 p) 303-730-1950  
 f) 303-730-1966  
[novus@novusbio.com](mailto:novus@novusbio.com)

**Novus Canada**

p) 855-668-8722  
 p) 905-827-6400  
 f) 905-827-6402  
[canada@novusbio.com](mailto:canada@novusbio.com)

**Novus Europe**

UK: p) +44 (0)1223 426 001 f) +44 (0)871 971 1635  
 DE: p) +49 (0)800 723 5208 f) +49 (0)800 589 2679  
 IT: p) +39 02 4032 6786 f) +39 02 4032 6340  
 FR: p) +33 (0)1 76 77 45 30 f) +33 (0)1 76 77 45 31  
[europe@novusbio.com](mailto:europe@novusbio.com)

