

NBP2-26264**Human TLR1 Stable Cell Line****Unit Size**

1 Vial

Storage

Store in gas phase of liquid nitrogen.

Target Species

Human

Applications

WB, FLOW

Host

HEK293

Reconstitution Instructions

Complete Growth Medium: DMEM with 4.5 g/L glucose + 10% FBS + 4 mM L-glutamine + 1 mM sodium pyruvate + 100 units/ml penicillin + 100 ug/ml streptomycin + 10 ug/ml blasticidin.

Selection Agent

Blasticidin

Specificity/Sensitivity

TLR1

Immunogen

TLR1 stable cell line expresses full-length human Toll-like receptor 1 (TLR1) with an N-terminal HA tag.

Recommended Dilutions

Flow Cytometry, Western Blot

BufferContents: 3-4 x 10⁶ cells

Biosafety Level: 2

Application Notes

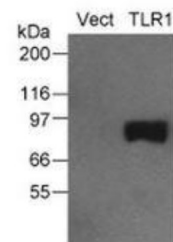
The TLR1 stable cell line can be used for TLR1 flow cytometric calibration and detection control. TLR1 expression has been validated by Western blotting (fig. 1) and flow cytometry (fig. 2).

References

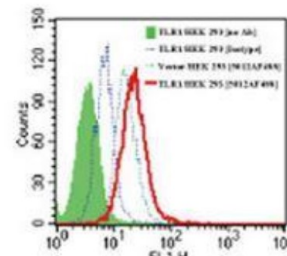
Mukherjee S, Biswas R, Biswas T. Alternative TLRs are stimulated by bacterial ligand to induce TLR2-unresponsive colon cell response. Cell Signal. 2013 Aug [PMID: 23665374]

Images

Western Blot: Human TLR1 Stable Cell Line [NBP2-26264] - Analysis of TLR1 expression in the TLR1 stable cell line using an HA antibody (20 ug total protein/lane). Legend. Vect: Vector/HEK 293; TLR1: TLR1 stable cell line.



Flow Cytometry: Human TLR1 Stable Cell Line [NBP2-26264] - Cell surface expression of TLR1 in the TLR1 stable cell line was analyzed by flow cytometry using Alexa Fluor 488-conjugated TLR1 antibody and compared with the Vector/HEK 293 cell line. Rabbit IgG isotype control and the Surface TLR Staining Flow Kit were used for this test. *Note: An endogenous level of TLR1 is present in HEK 293 cell... See more at www.novusbio.com/NBP2-26264

**Notes**

Assume all cultures are hazardous since they may harbor latent viruses or other organisms that are uncharacterized. The following safety precautions should be observed.

- Use pipette aids to prevent ingestion and keep aerosols down to a minimum.
- No eating, drinking or smoking while handling the TLR1 stable line.
- Wash hands after handling the TLR1 stable line and before leaving t... See more at www.novusbio.com/NBP2-26264

Updated 12/27/2013 3.0

This product is for research use only and is not approved for use in humans or in clinical diagnosis. Reporter Cell Lines are guaranteed for 1 year from date of receipt.

Novus USA

p) 888-506-6887
 p) 303-730-1950
 f) 303-730-1966
novus@novusbio.com

Novus Canada

p) 855-668-8722
 p) 905-827-6400
 f) 905-827-6402
canada@novusbio.com

Novus Europe

UK: p) +44 (0)1223 426 001 f) +44 (0)871 971 1635
 DE: p) +49 (0)800 723 5208 f) +49 (0)800 589 2679
 IT: p) +39 02 4032 6786 f) +39 02 4032 6340
 FR: p) +33 (0)1 76 77 45 30 f) +33 (0)1 76 77 45 31
europe@novusbio.com

