

# Product Datasheet

## **Ki-67/MKI67 Antibody** **NBP2-22112SS**

Unit Size: 0.025 ml

Store at 4C short term. Aliquot and store at -20C long term. Avoid freeze-thaw cycles.

[www.novusbio.com](http://www.novusbio.com)



[support@novusbio.com](mailto:support@novusbio.com)

Protocols, Publications, Related Products, Reviews, Research Tools and Images at:  
[www.novusbio.com/NBP2-22112](http://www.novusbio.com/NBP2-22112)

Updated 6/15/2014 v.20.1

**NBP2-22112SS**

Ki-67/MKI67 Antibody (8D5)

Product Information	
Unit Size	0.025 ml
Concentration	1.0 mg/ml
Storage	Store at 4C short term. Aliquot and store at -20C long term. Avoid freeze-thaw cycles.
Clonality	Monoclonal
Clone	8D5
Preservative	0.03% Sodium Azide
Isotype	IgG1
Purity	Ammonium sulfate precipitation
Buffer	PBS
Target Molecular Weight	358 kDa

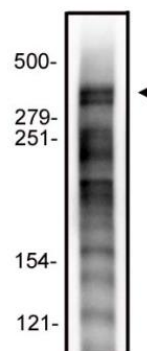
Product Description	
Host	Mouse
Gene ID	4288
Gene Symbol	MKI67
Species	Human
Marker	Proliferation Marker
Immunogen	Synthetic peptide corresponding to an internal sequence of human Ki67 (CEDLAGFKELFQTPG), conjugated to KLH. [UniProt# P46013]

Product Application Details	
Applications	Western Blot, ELISA, Immunocytochemistry/Immunofluorescence, Immunohistochemistry-Paraffin
Recommended Dilutions	ELISA 1:10000, Immunocytochemistry/Immunofluorescence 1:100, Immunohistochemistry-Paraffin 1:200-1:1000, Western Blot 1:500-1:2000
Application Notes	This Ki67 (8D5) antibody is useful for Western blot, Immunohistochemistry on paraffin-embedded sections and ELISA.

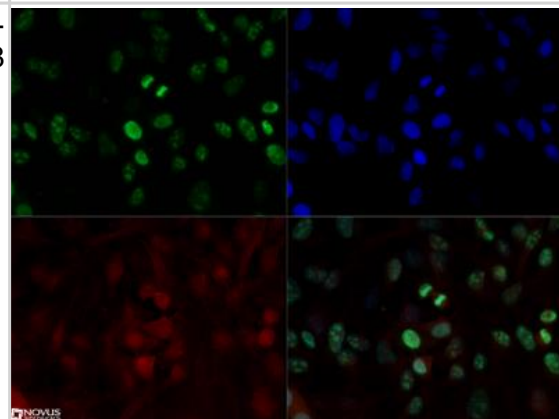


## Images

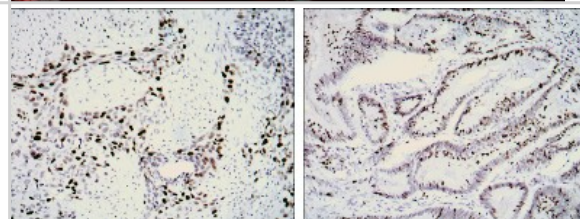
Western Blot: Ki67 Antibody (8D5) [NBP2-22112] - Western blot analysis of A431 cell lysate using Ki67 antibody at a concentration of 2 ug/ml.



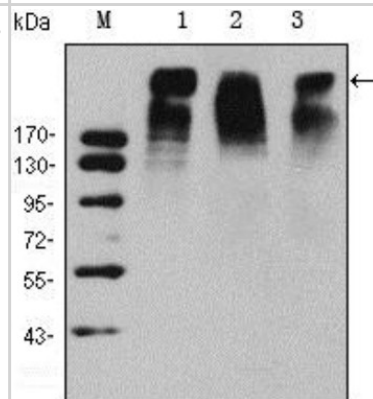
Immunocytochemistry/Immunofluorescence: Ki67 Antibody (8D5) [NBP2-22112] - Ki67 antibody was tested at 1:100 in HeLa cells with Dylight 488 (green). Nuclei and alpha-tubulin were counterstained with DAPI (blue) and Dylight 550 (red). Image objective 40x.



Immunohistochemistry-Paraffin: Ki67 Antibody (8D5) [NBP2-22112] - Immunohistochemical analysis of paraffin-embedded lung cancer (left) and rectal cancer (right) using Ki67 mouse mAb with DAB staining.



Western Blot: Ki67 Antibody (8D5) [NBP2-22112] - Western blot analysis using Ki67 mouse mAb against Hela (1), MCF-7 (2) and Raji (3) cell lysate.





### **Novus Biologicals USA**

8100 Southpark Way, A-8  
Littleton, CO 80120  
USA  
Phone: 303.730.1950  
Toll Free: 1.888.506.6887  
Fax: 303.730.1966  
[novus@novusbio.com](mailto:novus@novusbio.com)

### **Novus Biologicals Canada**

461 North Service Road West, Unit B37  
Oakville, ON L6M 2V5  
Canada  
Phone: 905.827.6400  
Toll Free: 855.668.8722  
Fax: 905.827.6402  
[canada@novusbio.com](mailto:canada@novusbio.com)

### **Novus Biologicals Europe**

19 Barton Lane  
Abingdon Science Park  
Abingdon, OX14 3NB, United Kingdom  
Phone: (44) (0) 1235 529449  
Free Phone: 0800 37 34 15  
Fax: (44) (0) 1235 533420  
[info@bio-technie.com](mailto:info@bio-technie.com)

### **General Contact Information**

[www.novusbio.com](http://www.novusbio.com)  
Technical Support: [technical@novusbio.com](mailto:technical@novusbio.com)  
Orders: [orders@novusbio.com](mailto:orders@novusbio.com)  
General: [novus@novusbio.com](mailto:novus@novusbio.com)

### **Limitations**

This product is for research use only and is not approved for use in humans or in clinical diagnosis. Primary Antibodies are guaranteed for 1 year from date of receipt.

**For more information on our guarantee, please visit [www.novusbio.com/guarantee](http://www.novusbio.com/guarantee).**

