

# Product Datasheet

## **PP2A alpha Antibody** **NBP1-61397-0.05mg**

Unit Size: 0.05 mg

Store at -20C. Avoid freeze-thaw cycles.

[www.novusbio.com](http://www.novusbio.com)



[support@novusbio.com](mailto:support@novusbio.com)

Protocols, Publications, Related Products, Reviews, Research Tools and Images at:  
[www.novusbio.com/NBP1-61397](http://www.novusbio.com/NBP1-61397)

Updated 2/9/2014 v.20.1

**NBP1-61397-0.05mg**

PP2A alpha Antibody

Product Information	
Unit Size	0.05 mg
Concentration	1 mg/ml
Storage	Store at -20C. Avoid freeze-thaw cycles.
Clonality	Polyclonal
Preservative	0.02% Sodium Azide
Purity	Immunogen affinity purified
Buffer	phosphate buffered saline (without Mg <sup>2+</sup> and Ca <sup>2+</sup> ), pH 7.4, 150mM NaCl, and 50% glycerol.

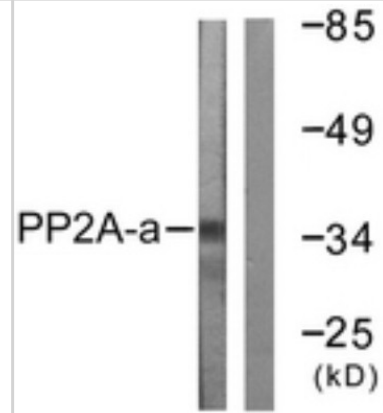
Product Description	
Host	Rabbit
Gene ID	5515
Gene Symbol	PPP2CA
Species	Human, Mouse, Rat
Species Reactivity	Human, Mouse, Rat
Specificity/Sensitivity	PP2A-alpha (Ab-307) Antibody detects endogenous levels of total PP2A-alpha protein.
Immunogen	The antiserum was produced against synthesized peptide derived from human PP2A-alpha. The immunogen region is: C-terminal.

Product Application Details	
Applications	Western Blot, ELISA, Immunocytochemistry/Immunofluorescence, Immunohistochemistry, Immunohistochemistry-Paraffin
Recommended Dilutions	ELISA 1:5000, Immunocytochemistry/Immunofluorescence 1:100-1:500, Immunohistochemistry 1:50-1:100, Immunohistochemistry-Paraffin 1:50-1:100, Western Blot 1:500-1:1000

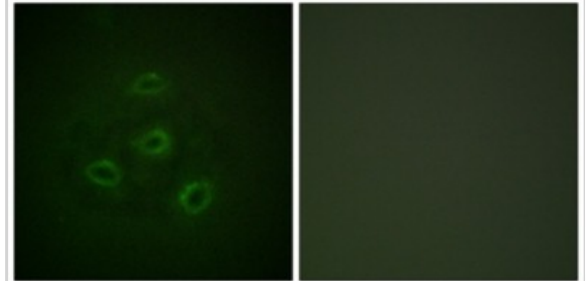


## Images

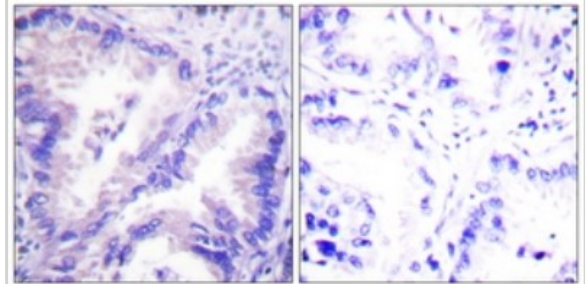
Western Blot: PP2A alpha Antibody [NBP1-61397] - Analysis of extracts from A549 cells, using PP2A alpha Antibody. The lane on the right is treated with the synthesized peptide.



Immunocytochemistry/Immunofluorescence: PP2A alpha Antibody [NBP1-61397] - Analysis of HepG2 cells, using PP2A alpha Antibody. The picture on the right is treated with the synthesized peptide.



Immunohistochemistry-Paraffin: PP2A alpha Antibody [NBP1-61397] - Analysis of paraffin-embedded human lung carcinoma tissue, using PP2A alpha Antibody. The picture on the right is treated with the synthesized peptide.





### **Novus Biologicals USA**

8100 Southpark Way, A-8  
Littleton, CO 80120  
USA  
Phone: 303.730.1950  
Toll Free: 1.888.506.6887  
Fax: 303.730.1966  
novus@novusbio.com

### **Novus Biologicals Canada**

461 North Service Road West, Unit B37  
Oakville, ON L6M 2V5  
Canada  
Phone: 905.827.6400  
Toll Free: 855.668.8722  
Fax: 905.827.6402  
canada@novusbio.com

### **Novus Biologicals Europe**

19 Barton Lane  
Abingdon Science Park  
Abingdon, OX14 3NB, United Kingdom  
Phone: (44) (0) 1235 529449  
Free Phone: 0800 37 34 15  
Fax: (44) (0) 1235 533420  
info@bio-techne.com

### **General Contact Information**

www.novusbio.com  
Technical Support: technical@novusbio.com  
Orders: orders@novusbio.com  
General: novus@novusbio.com

### **Products Related to NBP1-61397-0.05mg**

---

NBP2-33376H	Blue Marker Antibody (6F4-F6) [HRP]
NB7160	Goat anti-Rabbit IgG Antibody [HRP]
H00005515-P01-10ug	PP2A alpha Recombinant Protein
NBL1-14689	PP2A alpha Overexpression Lysate (Native)

---

### **Limitations**

This product is for research use only and is not approved for use in humans or in clinical diagnosis. Primary Antibodies are guaranteed for 1 year from date of receipt.

**For more information on our guarantee, please visit [www.novusbio.com/guarantee](http://www.novusbio.com/guarantee).**

