

# Product Datasheet

## **RhoA Antibody** **NBP1-03452**

Unit Size: 0.1 ml

Store at 4C short term. Aliquot and store at -20C long term. Avoid freeze-thaw cycles.

[www.novusbio.com](http://www.novusbio.com)



[support@novusbio.com](mailto:support@novusbio.com)

Protocols, Publications, Related Products, Reviews, Research Tools and Images at:  
[www.novusbio.com/NBP1-03452](http://www.novusbio.com/NBP1-03452)

Updated 3/5/2011 v.20.1

**NBP1-03452****RhoA Antibody**

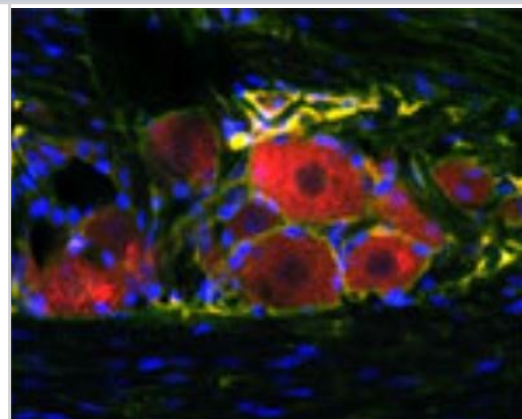
<b>Product Information</b>	
<b>Unit Size</b>	0.1 ml
<b>Concentration</b>	lyoph
<b>Storage</b>	Store at 4C short term. Aliquot and store at -20C long term. Avoid freeze-thaw cycles.
<b>Clonality</b>	Polyclonal
<b>Preservative</b>	No Preservative
<b>Reconstitution Instructions</b>	Reconstitute in 0.1 ml of sterile water. Centrifuge to remove any insoluble material. When reconstituting, glycerol (1:1) may be added for an additional stability.
<b>Purity</b>	Whole antisera
<b>Buffer</b>	Lyophilized.

<b>Product Description</b>	
<b>Host</b>	Sheep
<b>Gene ID</b>	387
<b>Gene Symbol</b>	RHOA
<b>Species</b>	Human, Mouse, Rat
<b>Species Reactivity</b>	Reacts with Human, Rat, Mouse.
<b>Specificity/Sensitivity</b>	RhOA.
<b>Immunogen</b>	A synthetic peptide as a part of human, rat, mouse, chicken, dog, bovine, frog, zebrafish, orangutan Transforming protein RhoA (Arha, Arha2) conjugated to an immunogenic carrier protein was used as the immunogen.

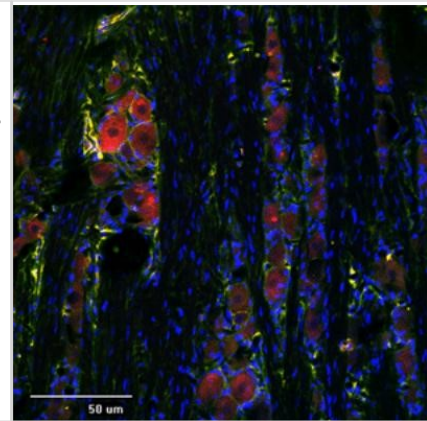
<b>Product Application Details</b>	
<b>Applications</b>	Western Blot, Immunocytochemistry/Immunofluorescence, Immunohistochemistry, Immunohistochemistry-Frozen, Immunohistochemistry-Paraffin
<b>Recommended Dilutions</b>	Immunocytochemistry/Immunofluorescence, Immunohistochemistry 1:10-1:2000, Immunohistochemistry-Frozen 1:10-1:2000, Immunohistochemistry-Paraffin 1:10-1:2000, Western Blot 1:300-1:3000

**Images**

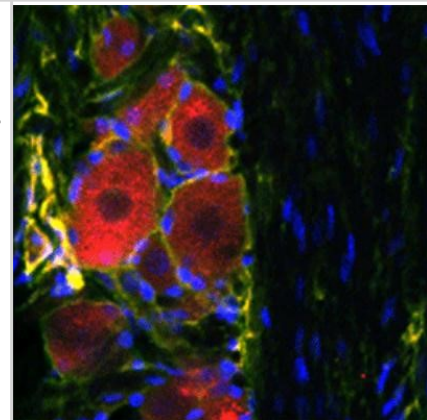
Immunocytochemistry/Immunofluorescence: RhoA Antibody [NBP1-03452] - Rat trigeminal at 1:500 dilution using Sheep antibody to Transforming protein RhoA whole serum (NBP1-03452 in red), Rabbit antibody to extracellular, N-terminal part of Sortilin whole serum (NB100-91287, in green), DAPI counter stained.



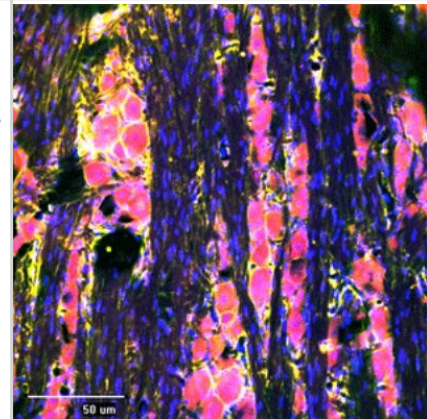
Immunocytochemistry/Immunofluorescence: RhoA Antibody [NBP1-03452] - Rat trigeminal at 1:500 dilution using Sheep antibody to Transforming protein RhoA whole serum (NBP1-03452 in red), Rabbit antibody to extracellular, N-terminal part of Sortilin whole serum (NB100-91287, in green), DAPI counter stained appearing in blue.



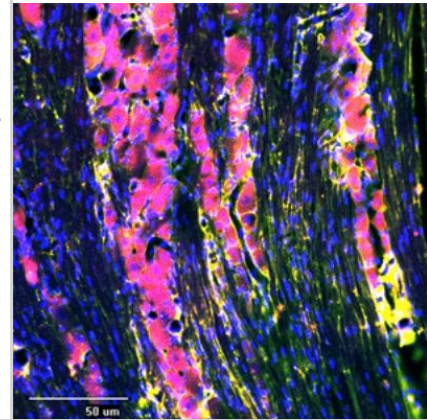
Immunocytochemistry/Immunofluorescence: RhoA Antibody [NBP1-03452] - Rat trigeminal at 1:500 dilution using Sheep antibody to Transforming protein RhoA whole serum (NBP1-03452 in red), Rabbit antibody to extracellular, N-terminal part of Sortilin whole serum (NB100-91287, in green), DAPI counter stained appearing in blue.



Immunocytochemistry/Immunofluorescence: RhoA Antibody [NBP1-03452] - Rat trigeminal at 1:500 dilution using Sheep antibody to Transforming protein RhoA whole serum (NBP1-03452 in red), Rabbit antibody to extracellular, N-terminal part of Sortilin whole serum (NB100-91287, in green), DAPI counter stained appearing in blue.



Immunocytochemistry/Immunofluorescence: RhoA Antibody [NBP1-03452] - Rat trigeminal at 1:500 dilution using Sheep antibody to Transforming protein RhoA whole serum (NBP1-03452 in red), Rabbit antibody to extracellular, N-terminal part of Sortilin whole serum (NB100-91287, in green), DAPI counter stained appearing in blue.





### **Novus Biologicals USA**

8100 Southpark Way, A-8  
Littleton, CO 80120  
USA  
Phone: 303.730.1950  
Toll Free: 1.888.506.6887  
Fax: 303.730.1966  
novus@novusbio.com

### **Novus Biologicals Canada**

461 North Service Road West, Unit B37  
Oakville, ON L6M 2V5  
Canada  
Phone: 905.827.6400  
Toll Free: 855.668.8722  
Fax: 905.827.6402  
canada@novusbio.com

### **Novus Biologicals Europe**

12 Cambridge Science Park  
Cambridge, CB4 0FQ  
United Kingdom  
Phone: +44 (0)1223 426001  
Fax: +44 (0)871 971 1635  
europe@novusbio.com

### **General Contact Information**

www.novusbio.com  
Technical Support: technical@novusbio.com  
Orders: orders@novusbio.com  
General: novus@novusbio.com

### **Products Related to NBP1-03452**

---

H00000387-Q01-10ug	RhoA Partial Recombinant Protein
H00000387-R02-20nmol	RhoA RNAi
NBL1-15349	RhoA Overexpression Lysate (Native)
H00000387-P01-10ug	RhoA Recombinant Protein

---

### **Limitations**

This product is for research use only and is not approved for use in humans or in clinical diagnosis. Primary Antibodies are guaranteed for 1 year from date of receipt.

**For more information on our guarantee, please visit [www.novusbio.com/guarantee](http://www.novusbio.com/guarantee).**

