

# Product Datasheet

## **TGF-beta 3 Antibody NB600-1531**

Unit Size: 0.5 ml

Store at 4C short term. Aliquot and store at -20C long term. Avoid freeze-thaw cycles.

[www.novusbio.com](http://www.novusbio.com)



[support@novusbio.com](mailto:support@novusbio.com)

### **Publications: 1**

Protocols, Publications, Related Products, Reviews, Research Tools and Images at:  
[www.novusbio.com/NB600-1531](http://www.novusbio.com/NB600-1531)

Updated 6/15/2014 v.20.1

**NB600-1531****TGF-beta 3 Antibody****Product Information**

<b>Unit Size</b>	0.5 ml
<b>Concentration</b>	0.2 mg/ml
<b>Storage</b>	Store at 4C short term. Aliquot and store at -20C long term. Avoid freeze-thaw cycles.
<b>Clonality</b>	Polyclonal
<b>Preservative</b>	0.05% Sodium Azide
<b>Purity</b>	Immunogen affinity purified
<b>Buffer</b>	Constituents: 10mM PBS, BSA. pH 7.4

**Product Description**

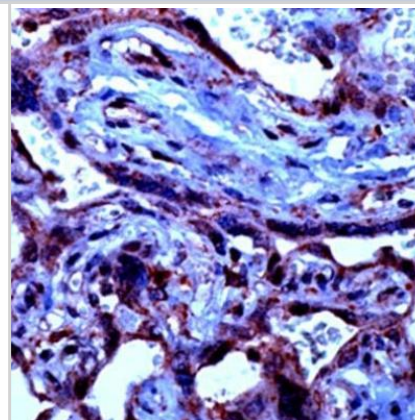
<b>Host</b>	Rabbit
<b>Gene ID</b>	7043
<b>Gene Symbol</b>	TGFB3
<b>Species</b>	Human, Mouse, Rat, Bovine, Porcine
<b>Specificity/Sensitivity</b>	TGF beta 3. Does not react with TGF beta 1 or TGF beta 2.
<b>Immunogen</b>	A synthetic peptide derived from the C-terminus of the precursor form of human TGF beta 3.

**Product Application Details**

<b>Applications</b>	Western Blot, Immunohistochemistry, Immunohistochemistry-Paraffin
<b>Recommended Dilutions</b>	Immunohistochemistry 1:10-1:500, Immunohistochemistry-Paraffin 1:10-1:500, Western Blot 1:100-1:2000
<b>Application Notes</b>	IHC-P: Use at a dilution of 1/100 for 10 minutes at RT. Staining of formalin-fixed tissues requires boiling tissue sections in 10mM citrate buffer, pH 6.0 for 10 minutes followed by cooling at RT for 20 minutes. NB600-1531 demonstrates cytoplasmic staining. Western Blot was reported in scientific literature.

**Images**

Immunohistochemistry-Paraffin: TGF-beta 3 Antibody [NB600-1531] - Formalin fixed paraffin embedded human placenta stained with TGFb3 antibody.

**Publications**

Kimura C, Hayashi M, Mizuno Y, Oike M. Endothelium-dependent epithelial-mesenchymal transition of tumor cells: Exclusive roles of transforming growth factor beta1 and beta2. Biochim Biophys Acta 2013 May 10 [PMID: 23668958] (WB, Bovine, Porcine, Human)



### **Novus Biologicals USA**

8100 Southpark Way, A-8  
Littleton, CO 80120  
USA  
Phone: 303.730.1950  
Toll Free: 1.888.506.6887  
Fax: 303.730.1966  
[novus@novusbio.com](mailto:novus@novusbio.com)

### **Novus Biologicals Canada**

461 North Service Road West, Unit B37  
Oakville, ON L6M 2V5  
Canada  
Phone: 905.827.6400  
Toll Free: 855.668.8722  
Fax: 905.827.6402  
[canada@novusbio.com](mailto:canada@novusbio.com)

### **Novus Biologicals Europe**

19 Barton Lane  
Abingdon Science Park  
Abingdon, OX14 3NB, United Kingdom  
Phone: (44) (0) 1235 529449  
Free Phone: 0800 37 34 15  
Fax: (44) (0) 1235 533420  
[info@bio-technie.com](mailto:info@bio-technie.com)

### **General Contact Information**

[www.novusbio.com](http://www.novusbio.com)  
Technical Support: [technical@novusbio.com](mailto:technical@novusbio.com)  
Orders: [orders@novusbio.com](mailto:orders@novusbio.com)  
General: [novus@novusbio.com](mailto:novus@novusbio.com)

### **Products Related to NB600-1531**

---

NB820-59248	Human Placenta Whole Tissue Lysate (Adult Normal)
-------------	---

---

### **Limitations**

This product is for research use only and is not approved for use in humans or in clinical diagnosis. Primary Antibodies are guaranteed for 1 year from date of receipt.

**For more information on our guarantee, please visit [www.novusbio.com/guarantee](http://www.novusbio.com/guarantee).**

