

# Product Datasheet

## Beclin 2 Antibody NB110-60984SS

Unit Size: 0.025 ml

Store at 4C short term. Aliquot and store at -20C long term. Avoid freeze-thaw cycles.

[www.novusbio.com](http://www.novusbio.com)



[support@novusbio.com](mailto:support@novusbio.com)

Protocols, Publications, Related Products, Reviews, Research Tools and Images at:  
[www.novusbio.com/NB110-60984](http://www.novusbio.com/NB110-60984)

Updated 6/15/2014 v.20.1

**NB110-60984SS**

## Beclin 2 Antibody

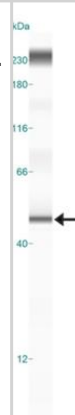
Product Information	
Unit Size	0.025 ml
Concentration	0.9 mg/ml
Storage	Store at 4C short term. Aliquot and store at -20C long term. Avoid freeze-thaw cycles.
Clonality	Polyclonal
Preservative	0.1% Sodium Azide
Purity	Immunogen affinity purified
Buffer	PBS, 30% glycerol
Target Molecular Weight	50 kDa

Product Description	
Host	Rabbit
Gene ID	441925
Gene Symbol	BECN1P1
Species	Human
Species Reactivity	Human.
Immunogen	A synthetic peptide made to an internal region (within residues 200-300) of the human Beclin 2 protein. [UniProt# A8MW95]

Product Application Details	
Applications	Western Blot, Simple Western
Recommended Dilutions	Western Blot 1:200-1:500, Simple Western 1:100
Application Notes	This Beclin 2 antibody is useful for Western blot analysis, where a band is seen at ~50 kDa. In Simple Western only 10-15 uL of the recommended dilution is used per data point.

**Images**

Simple Western: Beclin 2 Antibody [NB110-60984] - Simple Western lane view shows a specific band for Beclin 2 in 0.5 mg/ml of HeLa lysate. This experiment was performed under reducing conditions using the 12-230 kDa separation system.





### **Novus Biologicals USA**

8100 Southpark Way, A-8  
Littleton, CO 80120  
USA  
Phone: 303.730.1950  
Toll Free: 1.888.506.6887  
Fax: 303.730.1966  
novus@novusbio.com

### **Novus Biologicals Canada**

461 North Service Road West, Unit B37  
Oakville, ON L6M 2V5  
Canada  
Phone: 905.827.6400  
Toll Free: 855.668.8722  
Fax: 905.827.6402  
canada@novusbio.com

### **Novus Biologicals Europe**

19 Barton Lane  
Abingdon Science Park  
Abingdon, OX14 3NB, United Kingdom  
Phone: (44) (0) 1235 529449  
Free Phone: 0800 37 34 15  
Fax: (44) (0) 1235 533420  
info@bio-techne.com

### **General Contact Information**

www.novusbio.com  
Technical Support: technical@novusbio.com  
Orders: orders@novusbio.com  
General: novus@novusbio.com

### **Limitations**

This product is for research use only and is not approved for use in humans or in clinical diagnosis. Primary Antibodies are guaranteed for 1 year from date of receipt.

**For more information on our guarantee, please visit [www.novusbio.com/guarantee](http://www.novusbio.com/guarantee).**

