

Product Datasheet

ATG16L1 Antibody NB110-60928SS

Unit Size: 0.025 ml

Store at 4C short term. Aliquot and store at -20C long term. Avoid freeze-thaw cycles.

www.novusbio.com



support@novusbio.com

Reviews: 1 Publications: 7

Protocols, Publications, Related Products, Reviews, Research Tools and Images at:
www.novusbio.com/NB110-60928

Updated 6/15/2014 v.20.1

NB110-60928SS

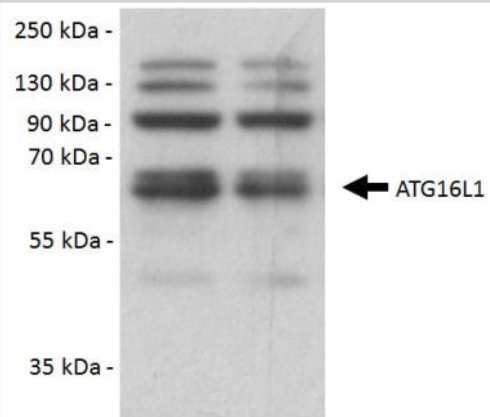
ATG16L1 Antibody

Product Information	
Unit Size	0.025 ml
Concentration	0.8 mg/ml
Storage	Store at 4C short term. Aliquot and store at -20C long term. Avoid freeze-thaw cycles.
Clonality	Polyclonal
Preservative	0.1% Sodium Azide
Purity	Immunogen affinity purified
Buffer	PBS, 30% glycerol
Target Molecular Weight	68 kDa
Product Description	
Host	Rabbit
Gene ID	55054
Gene Symbol	ATG16L1
Species	Human, Mouse, Rat, Bovine, Canine, Primate
Species Reactivity	Human, rat, bovine, canine, mouse and primate.
Immunogen	A synthetic peptide within residues 1-100 of human ATG16L1 protein. [Swiss-Prot# Q676U5]
Product Application Details	
Applications	Western Blot, Electron Microscopy, Immunohistochemistry, Immunohistochemistry-Paraffin
Recommended Dilutions	Electron Microscopy 1:10-1:500, Immunohistochemistry, Immunohistochemistry-Paraffin 1:250, Western Blot 0.5-2 ug/ml
Application Notes	In Western blot analysis, a specific band is seen at ~68kDa. Electron Microscopy and IHC-P applications are reported in scientific literature (PMIDs 22531915 and 25060858 respectively).

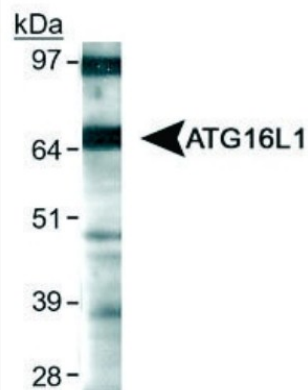


Images

Western Blot: ATG16L1 Antibody [NB110-60928] - Detection of ATG16L1 using NB110-60928 in HCT116 whole cell extracts. Image from verified customer review.



Western Blot: ATG16L1 Antibody [NB110-60928] - Detection of ATG16L1 using NB110-60928 in HeLa whole cell extracts.



Publications

Sun KT, Chen MY, Tu MG et al. MicroRNA-20a regulates autophagy related protein-ATG16L1 in hypoxia-induced osteoclast differentiation. *Bone*. 2014 Dec 05 [PMID: 25485521] (WB, Mouse)

Details:
ATG16L1 antibody used for WB on RAW264.7 cells subjected to RANKL and M-CSF mediated osteoclast differentiation as well as hypoxic stress (Fig. 1E). WB also performed on RAW264.7 cells transduced with miR-20a mimics or antagomiR, and Bafilomycin under hypoxia (Fig. 3B)

Tang JY, Hsi E, Huang YC et al. Overexpression of Autophagy-Related 16-Like 1 in Patients with Oral Squamous Cell Carcinoma. *Pathol. Oncol. Res.* 2014 Jul 25 [PMID: 25060858] (IHC-P, Human)

Details:
ATG16L1 antibody used for IHC-P (1:250 dilution) on Human Oral Squamous Cell Carcinoma tissue sections - formalin fixation, 4um paraffin sections, heat induced antigen retrieval with 0.1 M citrate buffer pH 6.0 for 10 min, primary incubation for 30 minutes RT followed by detection with REAL Envision Detection System - Peroxidase/DAB. Fig 1 shows cytoplasmic staining / immunoreactivity score (IRS).

Curtis S, Jones CJ, Garrod A et al. Identification of Autophagic Vacuoles and Regulators of Autophagy in Villous Trophoblast from Normal Term Pregnancies and in Fetal Growth Restriction *J Matern Fetal Neonatal Med* 2012 Oct 8 [PMID: 23039021] (IHC, Human)

Tattoli I, Sorbara MT, Vuckovic D et al. Amino Acid starvation induced by invasive bacterial pathogens triggers an innate host defense program *Cell Host Microbe* 2012 Jun 14 [PMID: 22704617] (WB, Human)

Juarez E, Carranza C, Hernandez-Sanchez F et al. NOD2 enhances the innate response of alveolar macrophages to *Mycobacterium tuberculosis* in humans. *Eur J Immunol.* 2011

Juarez E, Carranza C, Hernandez-Sanchez F, Leon-Contreras JC, Hernandez-Pando R, Escobedo D, Torres M, Sada E. NOD2 enhances the innate response of alveolar macrophages to *Mycobacterium tuberculosis* in humans. *Eur J Immunol*;42(4):880-9. 2012 Apr. [PMID: 22531915] (Human)

Plantinga TS, Crisan TO, Oosting M. Crohn's disease-associated ATG16L1 polymorphism modulates pro-inflammatory cytokine responses selectively upon activation of NOD2. *Gut.* 2011 Mar 15. [PMID: 21406388]



Procedures

Protocol specific for apg16 Antibody (NB110-60928)

Western Blot Protocol

1. Perform SDS-PAGE (4-12% MOPS) on samples to be analyzed, loading 34 ug of total protein per lane.
2. Transfer proteins to Nitrocellulose according to the instructions provided by the manufacturer of the transfer apparatus.
3. Rinse membrane with dH₂O and then stain the blot using Ponceau S for 1-2 minutes to access the transfer of proteins onto the nitrocellulose membrane. Rinse the blot in water to remove excess stain and mark the lane locations and locations of molecular weight markers using a pencil.
4. Rinse the blot in TBS for approximately 5 minutes.
5. Block the membrane using 5% non-fat dry milk + 1% BSA in TBS, overnight at 4C.
6. Rinse the membrane in dH₂O and then wash the membrane in wash buffer [TBS + 0.1% Tween] 3 times for 10 minutes each.
7. Dilute the rabbit anti-ATG16L1 primary antibody (NB 110-60928) in blocking buffer and incubate 1.5 hours at room temperature.
8. Rinse the membrane in dH₂O and then wash the membrane in wash buffer [TBS + 0.1% Tween] 3 times for 10 minutes each.
9. Apply the diluted rabbit-IgG HRP-conjugated secondary antibody in blocking buffer (as per manufacturers instructions) and incubate 1 hour at room temperature.
10. Wash the blot in wash buffer [TBS + 0.1% Tween] 3 times for 10 minutes each (this step can be repeated as required to reduce background).
11. Apply the detection reagent of choice in accordance with the manufacturers instructions (Pierce Pico ECL).

Note: Tween-20 can be added to the blocking or antibody dilution buffer at a final concentration of 0.05-0.2%, provided it does not interfere with antibody-antigen binding.





Novus Biologicals USA

8100 Southpark Way, A-8
Littleton, CO 80120
USA
Phone: 303.730.1950
Toll Free: 1.888.506.6887
Fax: 303.730.1966
novus@novusbio.com

Novus Biologicals Canada

461 North Service Road West, Unit B37
Oakville, ON L6M 2V5
Canada
Phone: 905.827.6400
Toll Free: 855.668.8722
Fax: 905.827.6402
canada@novusbio.com

Novus Biologicals Europe

19 Barton Lane
Abingdon Science Park
Abingdon, OX14 3NB, United Kingdom
Phone: (44) (0) 1235 529449
Free Phone: 0800 37 34 15
Fax: (44) (0) 1235 533420
info@bio-techne.com

General Contact Information

www.novusbio.com
Technical Support: technical@novusbio.com
Orders: orders@novusbio.com
General: novus@novusbio.com

Limitations

This product is for research use only and is not approved for use in humans or in clinical diagnosis. Primary Antibodies are guaranteed for 1 year from date of receipt.

For more information on our guarantee, please visit www.novusbio.com/guarantee.

