

Product Datasheet

RhoA Antibody **NB100-91273**

Unit Size: 0.1 ml

Store at 4C short term. Aliquot and store at -20C long term. Avoid freeze-thaw cycles.

www.novusbio.com



support@novusbio.com

Protocols, Publications, Related Products, Reviews, Research Tools and Images at:
www.novusbio.com/NB100-91273

Updated 3/5/2011 v.20.1

NB100-91273**RhoA Antibody**

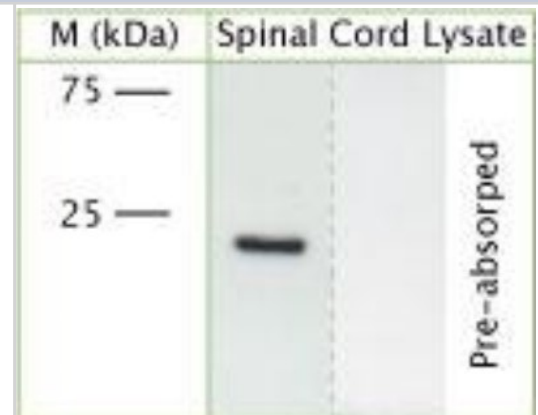
Product Information	
Unit Size	0.1 ml
Concentration	lyoph
Storage	Store at 4C short term. Aliquot and store at -20C long term. Avoid freeze-thaw cycles.
Clonality	Polyclonal
Preservative	No Preservative
Reconstitution Instructions	Reconstitute in 0.1 ml of sterile water. Centrifuge to remove any insoluble material. When reconstituting, glycerol (1:1) may be added for an additional stability.
Purity	Whole antisera
Buffer	Lyophilized.
Target Molecular Weight	22 kDa kDa

Product Description	
Host	Rabbit
Gene ID	387
Gene Symbol	RHOA
Species	Human, Mouse, Rat
Species Reactivity	Human, Rat and Mouse
Specificity/Sensitivity	RhOA.
Immunogen	A synthetic peptide as a part of human, rat, mouse, chicken, dog, bovine, frog, zebrafish, orangutan Transforming protein RhoA (Arha, Arha2) conjugated to an immunogenic carrier protein was used as the immunogen.

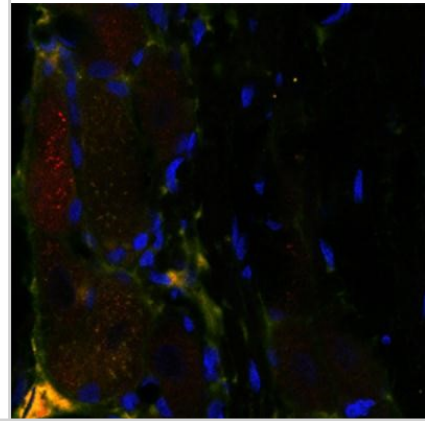
Product Application Details	
Applications	Western Blot, Immunocytochemistry/Immunofluorescence, Immunohistochemistry, Immunohistochemistry-Paraffin
Recommended Dilutions	Immunocytochemistry/Immunofluorescence 1:500, Immunohistochemistry 1:10-1:2000, Immunohistochemistry-Paraffin 1:300-1:3000, Western Blot 1:300-1:3000

Images

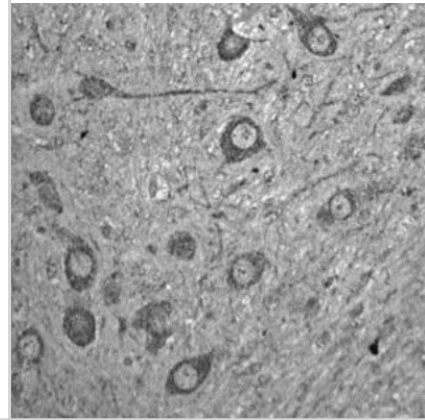
Western Blot: RhoA Antibody [NB100-91273] - RhOA Antibody [NB100-91273] - rat spinal cord lysate using Rabbit antibody to Transforming protein RhoA: whole serum at 1:2000 dilution. One single band is detected.



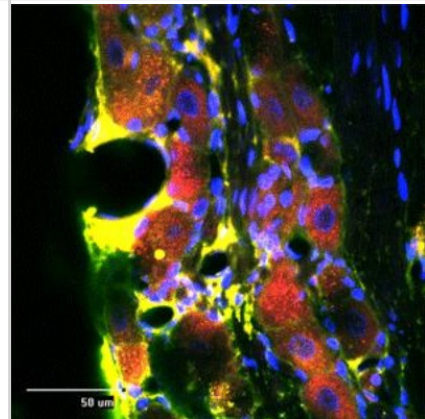
Immunocytochemistry/Immunofluorescence: RhoA Antibody [NB100-91273] - Rat trigeminal at 1:500 dilution using Rabbit antibody to Transforming protein RhoA: whole serum (NB100-91273, in red), Sheep antibody to extracellular, N-terminal part of Sortilin: whole serum (NB100-98771, in green), DAPI counter stained appearing in blue.



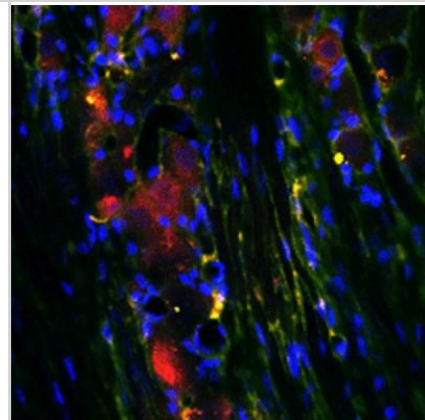
Immunohistochemistry-Paraffin: RhoA Antibody [NB100-91273] - IHC on rat brain (paraffin section) using Rabbit antibody to Transforming protein RhoA (Arha, Arha2): whole serum at 1 : 300 dilution incubated overnight at 4C and developed with ABC/DAB/Ni.



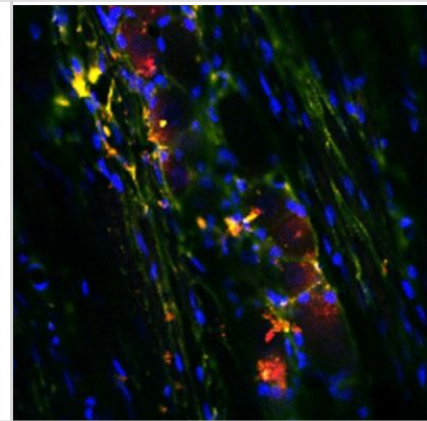
Immunocytochemistry/Immunofluorescence: RhoA Antibody [NB100-91273] - Rat trigeminal at 1:500 dilution using Rabbit antibody to Transforming protein RhoA: whole serum (NB100-91273, in red), Sheep antibody to extracellular, N-terminal part of Sortilin: whole serum (NB100-98771, in green), DAPI counter stained appearing in blue.



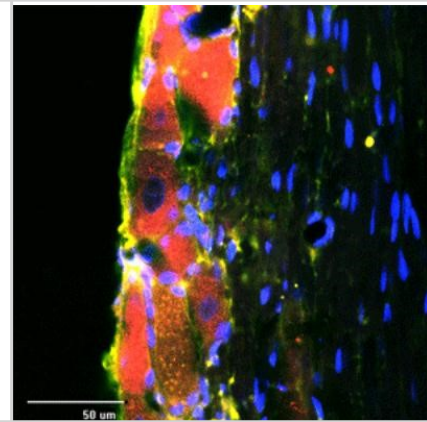
Immunocytochemistry/Immunofluorescence: RhoA Antibody [NB100-91273] - Rat trigeminal at 1:500 dilution using Rabbit antibody to Transforming protein RhoA: whole serum (NB100-91273, in red), Sheep antibody to extracellular, N-terminal part of Sortilin: whole serum (NB100-98771, in green), DAPI counter stained appearing in blue.



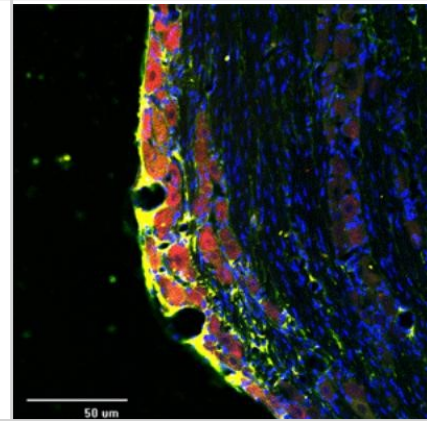
Immunocytochemistry/Immunofluorescence: RhoA Antibody [NB100-91273] - Rat trigeminal at 1:500 dilution using Rabbit antibody to Transforming protein RhoA: whole serum (NB100-91273, in red), Sheep antibody to extracellular, N-terminal part of Sortilin: whole serum (NB100-98771, in green), DAPI counter stained appearing in blue.



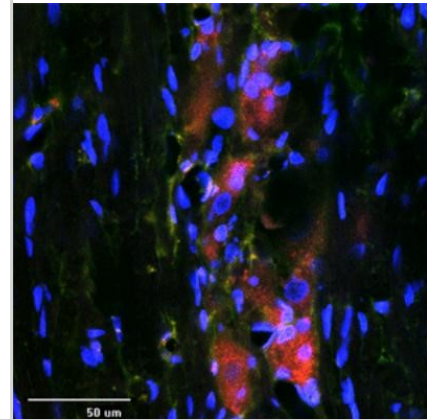
Immunocytochemistry/Immunofluorescence: RhoA Antibody [NB100-91273] - Rat trigeminal at 1:500 dilution using Rabbit antibody to Transforming protein RhoA: whole serum (NB100-91273, in red), Sheep antibody to extracellular, N-terminal part of Sortilin: whole serum (NB100-98771, in green), DAPI counter stained appearing in blue.



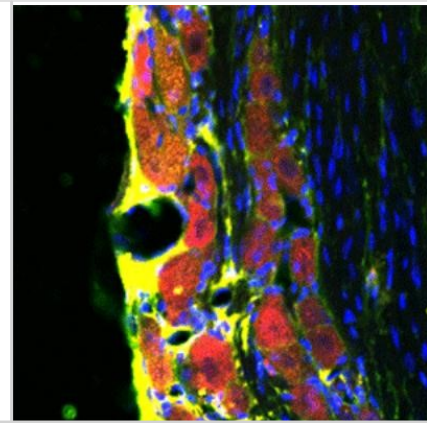
Immunocytochemistry/Immunofluorescence: RhoA Antibody [NB100-91273] - Rat trigeminal at 1:500 dilution using Rabbit antibody to Transforming protein RhoA: whole serum (NB100-91273, in red), Sheep antibody to extracellular, N-terminal part of Sortilin: whole serum (NB100-98771, in green), DAPI counter stained appearing in blue.



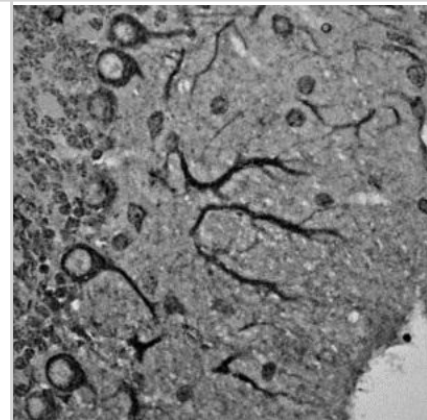
Immunocytochemistry/Immunofluorescence: RhoA Antibody [NB100-91273] - Rat trigeminal at 1:500 dilution using Rabbit antibody to Transforming protein RhoA: whole serum (NB100-91273, in red), Sheep antibody to extracellular, N-terminal part of Sortilin: whole serum (NB100-98771, in green), DAPI counter stained appearing in blue.



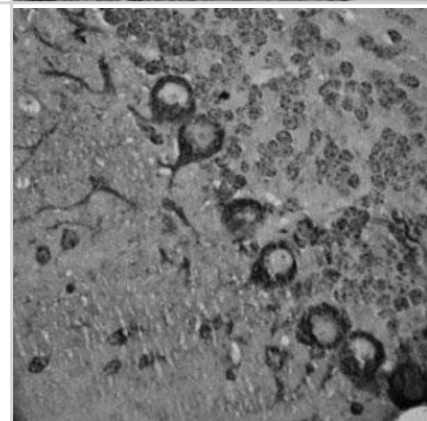
Immunocytochemistry/Immunofluorescence: RhoA Antibody [NB100-91273] - Rat trigeminal at 1:500 dilution using Rabbit antibody to Transforming protein RhoA: whole serum (NB100-91273, in red), Sheep antibody to extracellular, N-terminal part of Sortilin: whole serum (NB100-98771, in green), DAPI counter stained appearing in blue.



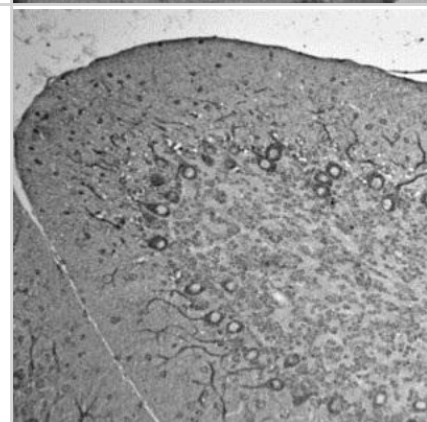
Immunohistochemistry-Paraffin: RhoA Antibody [NB100-91273] - IHC on rat brain (paraffin section) using Rabbit antibody to Transforming protein RhoA (Arha, Arha2): whole serum at 1 : 300 dilution incubated overnight at 4C and developed with ABC/DAB/Ni.



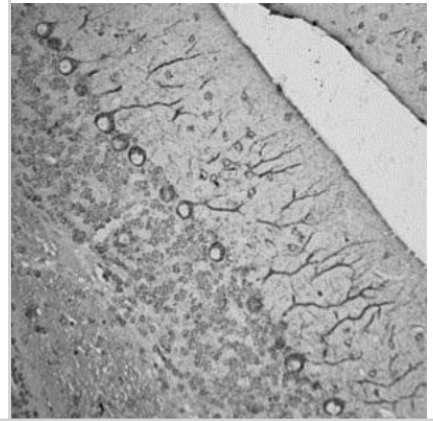
Immunohistochemistry-Paraffin: RhoA Antibody [NB100-91273] - IHC on rat brain (paraffin section) using Rabbit antibody to Transforming protein RhoA (Arha, Arha2): whole serum at 1 : 300 dilution incubated overnight at 4C and developed with ABC/DAB/Ni.



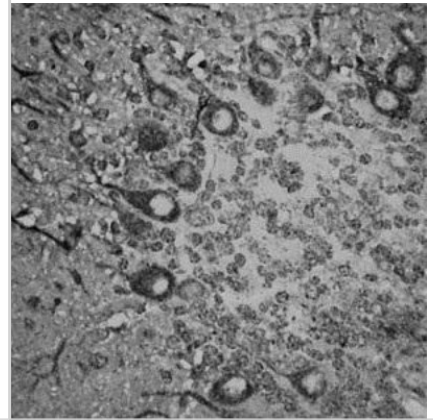
Immunohistochemistry-Paraffin: RhoA Antibody [NB100-91273] - IHC on rat brain (paraffin section) using Rabbit antibody to Transforming protein RhoA (Arha, Arha2): whole serum at 1 : 300 dilution incubated overnight at 4C and developed with ABC/DAB/Ni.



Immunohistochemistry-Paraffin: RhoA Antibody [NB100-91273] - IHC on rat brain (paraffin section) using Rabbit antibody to Transforming protein RhoA (Arha, Arha2): whole serum at 1 : 300 dilution incubated overnight at 4C and developed with ABC/DAB/Ni.



Immunohistochemistry-Paraffin: RhoA Antibody [NB100-91273] - IHC on rat brain (paraffin section) using Rabbit antibody to Transforming protein RhoA (Arha, Arha2): whole serum at 1 : 300 dilution incubated overnight at 4C and developed with ABC/DAB/Ni.





Novus Biologicals USA

8100 Southpark Way, A-8
Littleton, CO 80120
USA
Phone: 303.730.1950
Toll Free: 1.888.506.6887
Fax: 303.730.1966
novus@novusbio.com

Novus Biologicals Canada

461 North Service Road West, Unit B37
Oakville, ON L6M 2V5
Canada
Phone: 905.827.6400
Toll Free: 855.668.8722
Fax: 905.827.6402
canada@novusbio.com

Novus Biologicals Europe

12 Cambridge Science Park
Cambridge, CB4 0FQ
United Kingdom
Phone: +44 (0)1223 426001
Fax: +44 (0)871 971 1635
europe@novusbio.com

General Contact Information

www.novusbio.com
Technical Support: technical@novusbio.com
Orders: orders@novusbio.com
General: novus@novusbio.com

Products Related to NB100-91273

NBL1-15349	RhoA Overexpression Lysate (Native)
H00000387-Q01-10ug	RhoA Partial Recombinant Protein
H00000387-P01-10ug	RhoA Recombinant Protein
H00000387-R02-20nmol	RhoA RNAi

Limitations

This product is for research use only and is not approved for use in humans or in clinical diagnosis. Primary Antibodies are guaranteed for 1 year from date of receipt.

For more information on our guarantee, please visit www.novusbio.com/guarantee.

