

# Product Datasheet

## **KAT3B/p300 Antibody NB100-507SS**

Unit Size: 0.05 ml

Aliquot and store at -20C or -80C. Avoid freeze-thaw cycles.

[www.novusbio.com](http://www.novusbio.com)



[support@novusbio.com](mailto:support@novusbio.com)

**Publications: 5**

Protocols, Publications, Related Products, Reviews, Research Tools and Images at:  
[www.novusbio.com/NB100-507](http://www.novusbio.com/NB100-507)

Updated 6/15/2014 v.20.1

**NB100-507SS**

KAT3B/p300 Antibody (RW128)

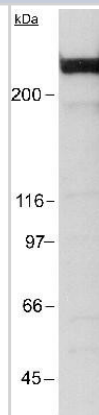
Product Information	
Unit Size	0.05 ml
Concentration	1 mg/ml
Storage	Aliquot and store at -20C or -80C. Avoid freeze-thaw cycles.
Clonality	Monoclonal
Clone	RW128
Preservative	0.1% Sodium Azide
Isotype	IgG1 Kappa
Purity	Protein A purified
Buffer	PBS, pH 7.4
Target Molecular Weight	300 kDa

Product Description	
Host	Mouse
Gene ID	2033
Gene Symbol	EP300
Species	Human, Mouse, Rat, Mustelid, Primate
Species Reactivity	Human, mouse, rat, monkey, and mink protein.
Immunogen	Fusion protein containing residues 1572-2371 of human KAT3B/p300. [UniProt# Q0947]

Product Application Details	
Applications	Western Blot, Immunocytochemistry/Immunofluorescence, Immunoprecipitation
Recommended Dilutions	Immunocytochemistry/Immunofluorescence 1:10-1:2000, Immunoprecipitation 1:10-1:500, Western Blot 1:250-1:500
Application Notes	This KAT3B/p300 (RW128) antibody is useful for Immunocytochemistry/Immunofluorescence, Immunoprecipitation and Western Blot, where a band is seen at ~300 kDa.

**Images**

Western Blot: KAT3B/p300 Antibody (RW128) [NB100-507] - Detection of p300 in a HeLa nuclear extract using NB 100-507 (1:250). ECL: 15 second exposure.



**Publications**

Nemethova M, Wintersberger E. Polyomavirus large T antigen binds the transcriptional coactivator protein p300. *J Virol*;73(2):1734-9. 1999 Feb. [PMID: 9882390]

Eckner R et al. Association of p300 and CBP with simian virus 40 large T antigen. *Mol Cell Biol*;16(7):3454-64. 1996 Jul. [PMID: 8668161] (IP, Mouse)

Bhattacharya S, Michels CL, Leung MK, Arany ZP, Kung AL, Livingston DM. Functional role of p35srj, a novel p300/CBP binding protein, during transactivation by HIF-1. *Genes Dev*;13(1):64-75. 1999 Jan 1. [PMID: 9887100]

Eckner R et al. Interaction and functional collaboration of p300/CBP and bHLH proteins in muscle and B-cell differentiation. *Genes Dev*;1 (19):2478-90. 1996 Oct 1. [PMID: 8843199]

Eckner R et al. Molecular cloning and functional analysis of the adenovirus E1A-associated 300-kD protein (p300) reveals a protein with properties of a transcriptional adaptor. *Genes Dev*;8(8):869-84. 1994 Apr 15. [PMID: 7523245]



## Procedures

### Western Blot Protocol for KAT3B/p300 Antibody (NB100-507)

#### Western Blot Protocol

1. Perform SDS-PAGE (3-8% Tris-acetate) on samples to be analyzed, loading 50ug of total protein per lane.
2. Transfer proteins to Nitrocellulose according to the instructions provided by the manufacturer of the transfer apparatus.
3. Stain the blot using ponceau S for 1-2 minutes to access the transfer of proteins onto the nitrocellulose membrane. Rinse the blot in water to remove excess stain and mark the lane locations and locations of molecular weight markers using a pencil.
4. Rinse the blot in TBS for approximately 5 minutes.
5. Block the membrane using 5% non-fat dry milk in TBS for 1.5 hours.
6. Dilute the mouse anti-p300 primary antibody (NB 100-507) in blocking buffer and incubate overnight at 4 degrees Celsius.
7. Wash the membrane in water for 5 minutes and apply the diluted mouse-IgG HRP-conjugated secondary antibody in blocking buffer (as per manufacturer's instructions) and incubate 1 hour at room temperature.
8. Wash the blot in TBS containing 0.05-0.1% Tween-20 for 10-20 minutes.
9. Wash the blot in type I water for an additional 10-20 minutes (this step can be repeated as required to reduce background).
10. Apply the detection reagent of choice in accordance with the manufacturer's instructions (Amersham's ECL is the standard reagent used at Novus Biologicals).

Note: Tween-20 can be added to the blocking buffer at a final concentration of 0.05-0.2%, provided it does not interfere with antibody-antigen binding.





### **Novus Biologicals USA**

8100 Southpark Way, A-8  
Littleton, CO 80120  
USA  
Phone: 303.730.1950  
Toll Free: 1.888.506.6887  
Fax: 303.730.1966  
novus@novusbio.com

### **Novus Biologicals Canada**

461 North Service Road West, Unit B37  
Oakville, ON L6M 2V5  
Canada  
Phone: 905.827.6400  
Toll Free: 855.668.8722  
Fax: 905.827.6402  
canada@novusbio.com

### **Novus Biologicals Europe**

19 Barton Lane  
Abingdon Science Park  
Abingdon, OX14 3NB, United Kingdom  
Phone: (44) (0) 1235 529449  
Free Phone: 0800 37 34 15  
Fax: (44) (0) 1235 533420  
info@bio-techne.com

### **General Contact Information**

www.novusbio.com  
Technical Support: technical@novusbio.com  
Orders: orders@novusbio.com  
General: novus@novusbio.com

### **Limitations**

This product is for research use only and is not approved for use in humans or in clinical diagnosis. Primary Antibodies are guaranteed for 1 year from date of receipt.

**For more information on our guarantee, please visit [www.novusbio.com/guarantee](http://www.novusbio.com/guarantee).**

