

FEAL

Parasitology



Mo Bi Tec
MOLECULAR BIOTECHNOLOGY

NEW!



MINI-SYSTEM FOR COLLECTING,
TRANSPORT AND FILTRATION
OF PARASITES.

NEW!

MINI-SYSTEM FOR COLLECTING, TRANSPORT AND FILTRATION OF PARASITES

A single step, closed:

The filtration system is located inside the tube where the sample is collected, allowing to collect and filtrate the sample, and recover the sediment in only one closed step!

Tablespoon and glass beads:

For an easy collecting and homogenization of the sample.

Double filter:

Increases the power of filtration of the homogenized sample, resulting in a cleaner, with less impurities sediment for the analysis.

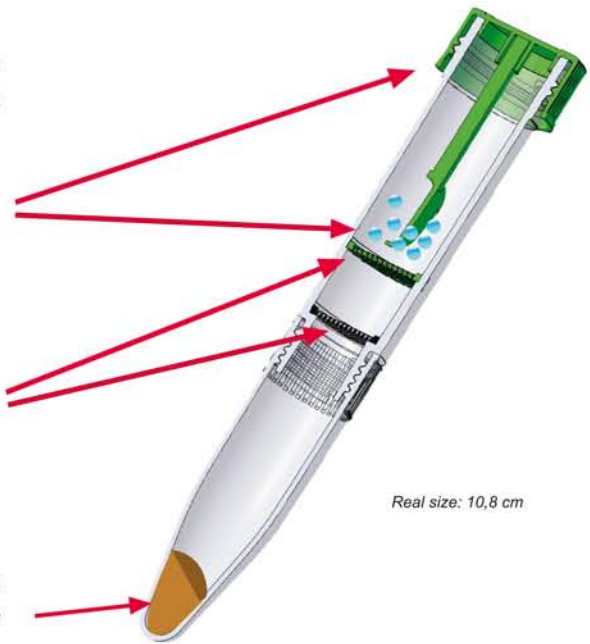
Sedimentation cone:

The parasites are efficiently collected in the sedimentation cone, during centrifugation, and easily aspirated/pipetted for later analysis by microscopy.

Media:

(*All Media are manufactured according to the European Guidelines 98/97/EC & RD1662/2000)

(**The volume of medium in the tubes is approx. 4 ml. The system is also available empty).



- SAF
- ECOSAF
- MIF/Lugol
- Bailanger
- Veronal Buffer

* system patented by Durviz S.L.U.

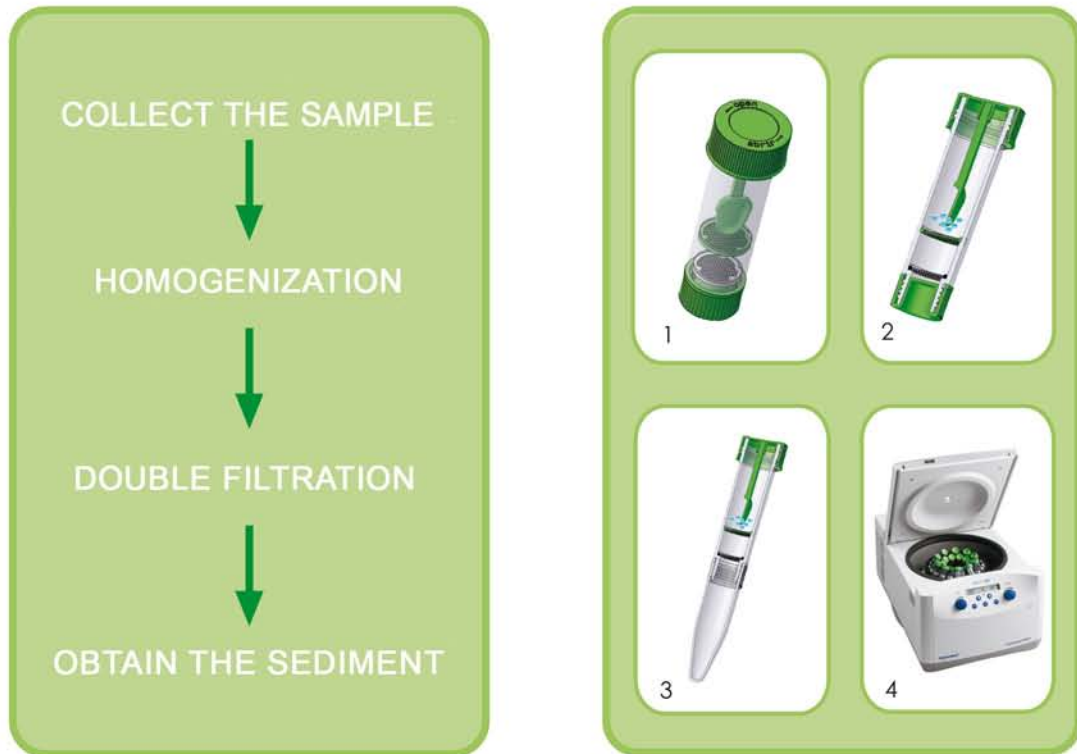
GRAHAM'S TEST

Test for detection of *Enterobius vermicularis* eggs :

- Simple technique for the collection of *Enterobius vermicularis* eggs from the anus margins.
- Each individual test contains 3 slides ready to use, for the correct repetition of the test during 3 days.
- Manufactured under the European Community Guidelines 98/97/EC & RD1662/2000.



PROTOCOL 4 IN 1



Order information

PRODUCT	SIZE	REF.
System with SAF	150 units	RPP1000
System with ECOSAF	150 units	RPP2000
System with MIF/Lugol	150 units	RPP3000
System with Bailanger	150 units	RPP4000
Sytem with Veronal buffer	150 units	RPP5000
Empty system	150 units	RPP6000
Graham's Test	90 units (90 x 3 slides)	RP1713

Contact and Support

MoBiTec GmbH ♦ Lotzestrasse 22a ♦ D-37083 Goettingen ♦ Germany

Customer Service – General inquiries & orders

phone: +49 (0)551 707 22 0
 fax: +49 (0)551 707 22 22
 e-mail: order@mobitec.com

Technical Service – Product information

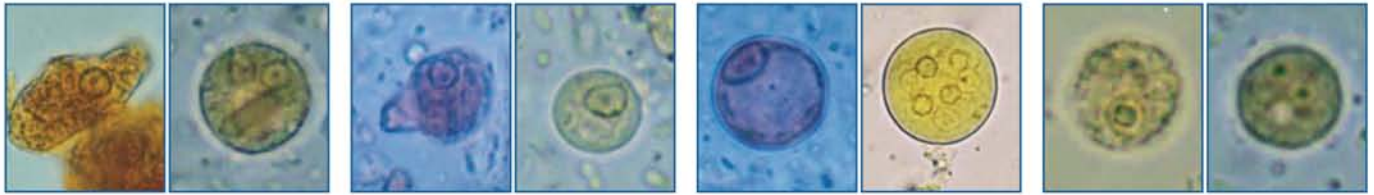
phone: +49 (0)551 707 22 70
 fax: +49 (0)551 707 22 77
 e-mail: info@mobitec.com

MoBiTec in your area: Find your local distributor at

www.mobitec.com



Trophozoites, Cysts, Larvae & Eggs

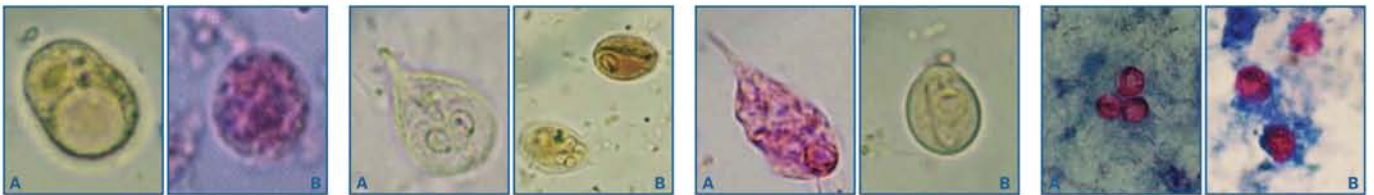


Entamoeba histolytica / *E. dispar*: trofozoito (A) y quiste inmaduro (B) teñidos con Lugol (A:10-60 μ m; B: 10-20 μ m).

Entamoeba hartmanni: (A) trofozoito en MIF (5-12 μ m); (B) quiste inmaduro con Lugol (5-10 μ m).

Entamoeba coli: (A) quiste inmaduro en MIF (10-35 μ m); (B) quiste maduro con Lugol (10-35 μ m).

Endolimax nana: trofozoito (A) y quiste maduro (B) con Lugol (A: 6-12 μ m; B: 5-10 μ m).

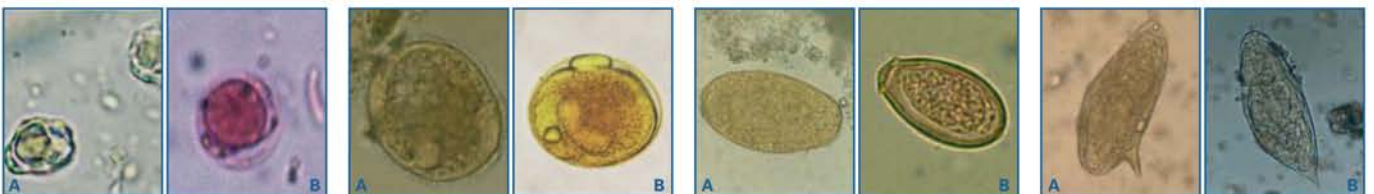


Iodamoeba buetschlii (A): quiste con lugol (5-20 μ m); *Dientamoeba fragilis* (B): trofozoito en MIF (5-15 μ m).

Giardia intestinalis: (A) trofozoito (10-20 μ m); (B) dos quistes con Lugol (8-19 μ m).

Chilomastix mesnili: (A) trofozoito en MIF (6-20 μ m); (B) quiste con Lugol (5-9 μ m).

Cryptosporidium sp. (A) y *Cyclospora cayentanensis* (B): oocistos con Ziehl Neelsen modificado (A: 4-6 μ 'b5m; B: 7.5-10 μ 'b5m).

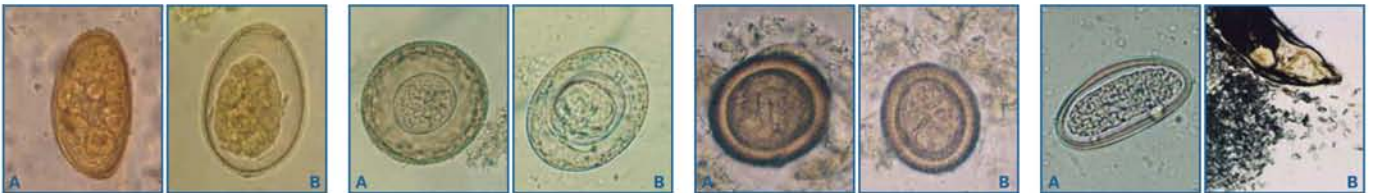


Blastocystis hominis: formas trofozoicas vacuolares en visión directa (A) y en MIF (B) (4-30 μ m).

Balantidium coli: (A) trofozoito en visión directa (50-200 μ m); (B) quiste con Lugol (50-70 μ m).

Fasciola hepatica (A) y *Clonorchis sinensis* (B): huevos en sedimentos de técnica de concentración (A: 130-150 x 63-90 μ m; B: 25-35 x 11-19 μ m).

Schistosoma mansoni Z(A) y *S. haematobium* (B): huevos en sedimentos de técnica de concentración (A: 114-180 x 45-73 μ m; B: 112-170 x 40-70 μ m).

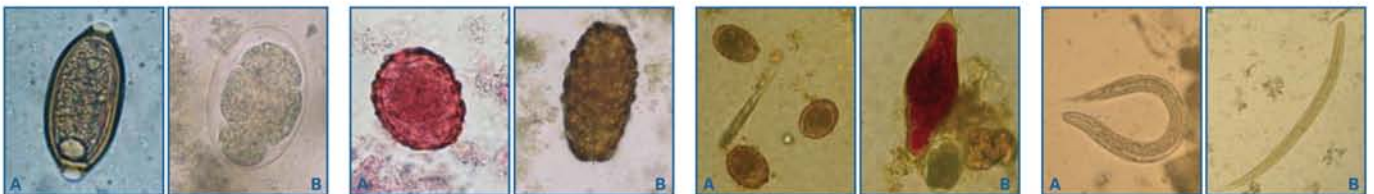


Paragonimus spp. (A) y *Diphylobothrium* spp. (B): huevos en sedimentos de técnica de concentración (A: 60-120 x 40-70 μ m; B: 58-76 x 40-51 μ m).

Hymenolepis diminuta (A) e *Hymenolepis nana* (B): huevos en sedimentos de técnica de concentración (A: 70-86 x 60-80 μ m; B: 40-60 x 30-50 μ m).

Taenia spp.: huevos en sedimentos de técnica de concentración (30-44 μ m).

Enterobius vermicularis: (A) huevo en visión directa; (B) extremo anterior de una hembra con huevos (A: 50-60 x 20-30 μ m).



Trichuris trichiura (A) y *Ancylostoma* - *Necator* (B): huevos en sedimentos de técnica de concentración (A: 50-55 x 22-24 μ m; B: 55-75 x 36-40 μ m).

Ascaris lumbricoides: (A) huevo fértil en MIF; (B) huevo infértil en visión directa (A: 55-75 x 35-50 μ m; B: 85-95 x 43-47 μ m).

Ascaris lumbricoides (A) y *Schistosoma intercalatum* (B) y *Ancylostomo* (B1): huevos con Lugol (A: 55-75 x 35-50 μ m; B S.i.:140-240 x 50-85 μ m; B1 An: 55-75 x 36-40 μ m).

Strongyloides stercoralis: larvas rhabditoides (L1) sin teñir (A) y con Lugol (B) (180-380 x 14-20 μ m).

Made on fixed faeces (using REAL SAF; REAL FIX; REAL MIF) and using REAL Concentration Solution and REAL Graham's Test. Pictures courtesy of J. Guillermo Esteban PhD, Prof. of Parasitology, Parasitology Department, Faculty of Pharmacy, University of Valencia.

If you should be interested in a copy of the poster, please send an e-mail to info@mobitec.de

