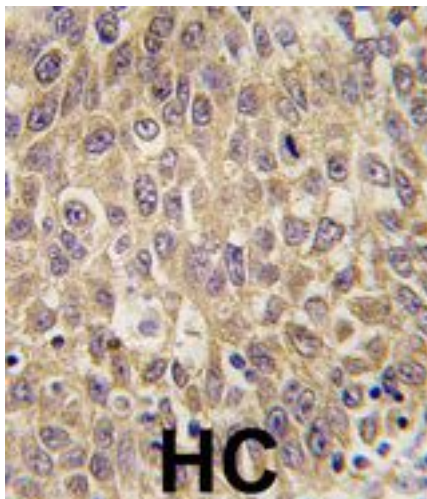


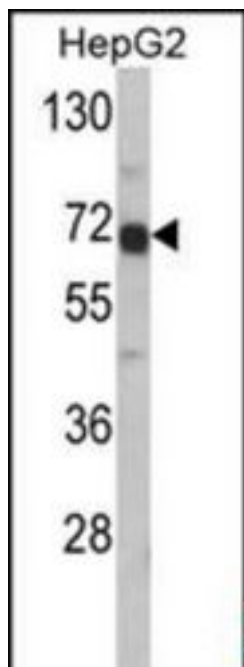
| AFP / Alpha Fetoprotein Rabbit anti-Human Polyclonal (N-Terminus) Antibody - LS-C98143 - LSBio | |
|--|--|
| CatalogID: | LS-C98143 |
| Target: | alpha-fetoprotein (AFP) |
| Synonyms: | AFP Antibody, Alpha-1-fetoprotein Antibody, Alpha-fetoprotein Antibody, HPAPF Antibody, Alpha-fetoglobulin Antibody, FETA Antibody |
| Host | AFP antibody was produced in Rabbit |
| Clonality: | Polyclonal |
| Immunogen Species: | AFP / Alpha Fetoprotein antibody was raised against Human |
| Antigen Type: | Synthetic peptide |
| Immunogen: | AFP / Alpha Fetoprotein antibody was raised against kLH conjugated synthetic peptide selected from the N-terminal region of human AFP. |
| Epitope: | N-Terminus |
| Reactivity: | Human |
| Purification: | Immunoaffinity purified |
| Presentation: | PBS, 0.09% sodium azide |
| Recommended Storage: | Maintain refrigerated at 2-8°C for up to 6 months. For long term storage store at -20°C. |
| Uses: | IHC - Paraffin (1:10 - 1:50), Western blot (1:1000) (Optimal dilution to be determined by the researcher) |
| Size: | 400 µl |

Immunohistochemistry Image:



Formalin-fixed and paraffin-embedded human hepatocarcinoma tissue reacted with AFP antibody (N-term)LS-C98143, which was peroxidase-conjugated to the secondary antibody, followed by DAB staining.

Western Blot Image:



Western blot of AFP Antibody (N-term) LS-C98143 in HepG2 cell line lysates (35 ug/lane). AFP (arrow) was detected using the purified Pab.

Requested From:

Japan

Laboratory Reagent For In Vitro Research Use Only

Not for resale without prior written consent from LifeSpan BioSciences, Inc.

Created on 10/3/2014

© 2014 LifeSpan BioSciences