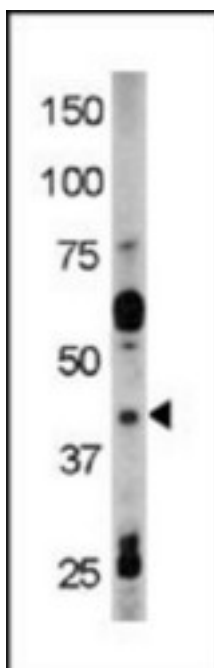


RAD9A / RAD9 Rabbit anti-Human Polyclonal (pTyr28) Antibody - LS-C96953 - LSBio

CatalogID:	LS-C96953
Target:	RAD9 homolog A (S. pombe) (RAD9A)
Synonyms:	RAD9A Antibody, HRAD9 Antibody, RAD9 Antibody, RAD9 homolog Antibody, RAD9 (S. pombe) homolog Antibody, RAD9 homolog A (S. pombe) Antibody
Host	RAD9A antibody was produced in Rabbit
Clonality:	Polyclonal
Immunogen Species:	RAD9A / RAD9 antibody was raised against Human
Antigen Type:	Synthetic phospho-peptide
Immunogen:	RAD9A / RAD9 antibody was raised against kLH conjugated synthetic phosphopeptide corresponding to amino acid residues surrounding Y28 of human Rad9.
Epitope:	pTyr28
Reactivity:	Human
Purification:	Immunoaffinity purified
Presentation:	PBS, 0.09% sodium azide
Recommended Storage:	Maintain refrigerated at 2-8°C for up to 6 months. For long term storage store at -20°C.
Uses:	Western blot (1:1000) (Optimal dilution to be determined by the researcher)
Size:	400 µl

Western Blot Image:



The anti-Phospho-Rad9-Y28 Pab LS-C96953 is used in Western blot to detect Phospho-Rad9-Y28 in HL60 tissue lysate

Requested From:

Japan

Laboratory Reagent For In Vitro Research Use Only

Not for resale without prior written consent from LifeSpan BioSciences, Inc.

Created on 10/2/2014

© 2014 LifeSpan BioSciences