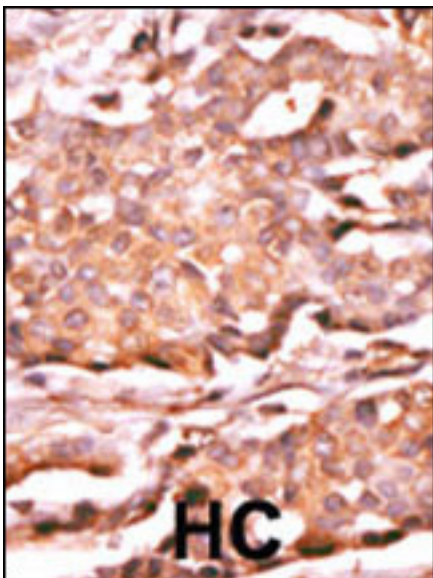


**RAD9A / RAD9 Rabbit anti-Human Polyclonal (pSer272) Antibody - LS-C96945 - LSBio**

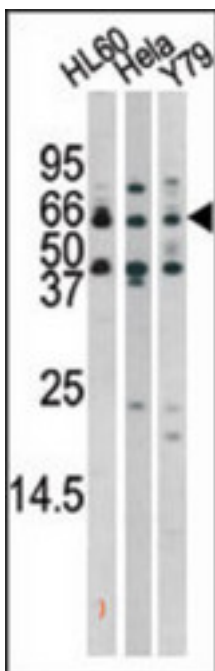
<b>CatalogID:</b>	LS-C96945
<b>Target:</b>	RAD9 homolog A (S. pombe) (RAD9A)
<b>Synonyms:</b>	RAD9A Antibody, HRAD9 Antibody, RAD9 Antibody, RAD9 homolog Antibody, RAD9 (S. pombe) homolog Antibody, RAD9 homolog A (S. pombe) Antibody
<b>Host</b>	RAD9A antibody was produced in Rabbit
<b>Clonality:</b>	Polyclonal
<b>Immunogen Species:</b>	RAD9A / RAD9 antibody was raised against Human
<b>Antigen Type:</b>	Synthetic phospho-peptide
<b>Immunogen:</b>	RAD9A / RAD9 antibody was raised against kLH conjugated synthetic phosphopeptide corresponding to amino acid residues surrounding S272 of human Rad9.
<b>Epitope:</b>	pSer272
<b>Reactivity:</b>	Human
<b>Purification:</b>	Immunoaffinity purified
<b>Presentation:</b>	PBS, 0.09% sodium azide
<b>Recommended Storage:</b>	Maintain refrigerated at 2-8°C for up to 6 months. For long term storage store at -20°C.
<b>Uses:</b>	IHC - Paraffin (1:10 - 1:100), Western blot (1:1000) (Optimal dilution to be determined by the researcher)
<b>Size:</b>	400 µl

**Immunohistochemistry Image:**



Formalin-fixed and paraffin-embedded human cancer tissue reacted with the primary antibody, which was peroxidase-conjugated to the secondary antibody, followed by AEC staining. BC = breast carcinoma; HC = hepatocarcinoma.

**Western Blot Image:**



The anti-Phospho-Rad9-S272 Pab LS-C96945 is used in Western blot to detect Phospho-Rad9-S272 in HL60 (left), Hela(middle), and Y79(right)tissue lysates.

**Requested From:**

Japan

Laboratory Reagent For In Vitro Research Use Only

Not for resale without prior written consent from LifeSpan BioSciences, Inc.

Created on 10/2/2014

© 2014 LifeSpan BioSciences