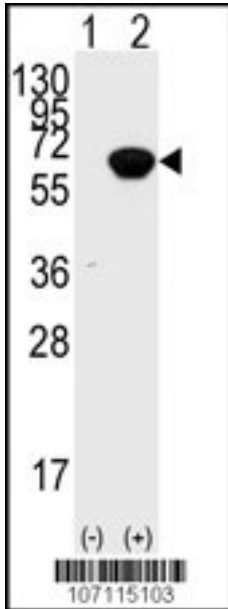


RAD9A / RAD9 Rabbit anti-Human Polyclonal (Ser328) Antibody - LS-C100166 - LSBio	
CatalogID:	LS-C100166
Target:	RAD9 homolog A (S. pombe) (RAD9A)
Synonyms:	RAD9A Antibody, HRAD9 Antibody, RAD9 Antibody, RAD9 homolog Antibody, RAD9 (S. pombe) homolog Antibody, RAD9 homolog A (S. pombe) Antibody
Host	RAD9A antibody was produced in Rabbit
Clonality:	Polyclonal
Immunogen Species:	RAD9A / RAD9 antibody was raised against Human
Antigen Type:	Synthetic peptide
Immunogen:	RAD9A / RAD9 antibody was raised against kLH conjugated synthetic peptide corresponding to amino acid residues surrounding S328 of human RAD9.
Epitope:	Ser328
Reactivity:	Human
Purification:	Immunoaffinity purified
Presentation:	PBS, 0.09% sodium azide
Recommended Storage:	Maintain refrigerated at 2-8°C for up to 6 months. For long term storage store at -20°C.
Uses:	Western blot (1:50 - 1:100) (Optimal dilution to be determined by the researcher)
Size:	400 µl

Western Blot Image:



Western blot analysis of Rad9 (arrow) using rabbit polyclonal RAD9 Antibody (S328) LS-C100166. 293 cell lysates (2 ug/lane) either nontransfected (Lane 1) or transiently transfected with the Rad9 gene (Lane 2) (Origene Technologies).

Requested From:

Japan

Laboratory Reagent For In Vitro Research Use Only

Not for resale without prior written consent from LifeSpan BioSciences, Inc.

Created on 8/23/2013

© 2013 LifeSpan BioSciences