

**PGP9.5 Antibody, pAb, Rabbit****Cat. No.:** A01398-40**Size:** 40 µg**Synonyms:** Rabbit Anti-PGP9.5 pAb;**Description:**

PGP9.5 (also known as UCHL1) is primary neuronal specific member of the ubiquitin C-terminal hydrolase (UCH) family of DUBs. PGP9.5 is highly abundant in brain and constitute up to 2% of total protein. Normally, PGP9.5 is expressed exclusively in neurons and testis and is involved in several neurodegenerative diseases and cancers. Specially, PGP9.5 is associated with Parkinson disease (PD) and Alzheimer disease (AD). Overexpression of PGP9.5 protein occurs in many cancers, including lung and colorectal carcinoma. PGP9.5 is involved in regulating ubiquitin homeostasis, apoptosis, and learning and memory. It may play an important functional role in the biology of the mammalian central nervous system (CNS).

GenScript **Rabbit Anti-PGP9.5 Polyclonal Antibody** is developed in rabbit using a KLH-coupled synthetic peptide from within residues 150-200 of human PGP9.5 (Swiss Prot: P09936).

**Immunogen:** KLH-coupled synthetic peptide from within residues 150-200 of human PGP9.5 (Swiss Prot: P09936).**Host:** Rabbit**Antigen Synonyms:** Human**Conjugation:** Unconjugated**Formulation:**

0.5 mg/ml, lyophilized with PBS, pH 7.4, containing 0.02% sodium azide

**Example****Ig Subclass:** Rabbit IgG**Specificity:** GenScript Rabbit Anti-PGP9.5 Polyclonal Antibody detects endogenous levels of human and mouse PGP9.5 protein. It is predicted to react with rat according to sequence homology.**Purification:** Immunoaffinity chromatography**Applications:**

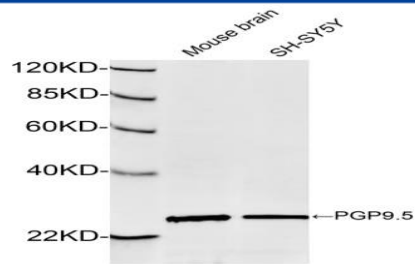
Working concentrations for specific applications should be determined by the investigator. The appropriate concentrations may be affected by secondary antibody affinity, antigen concentration, the sensitivity of the method of detection, temperature, the length of the incubations, and other factors. The suitability of this antibody for applications other than those listed below has not been determined. The following concentration ranges are recommended starting points for this product.

**ELISA:** 0.05-0.2 µg/ml**Western blot:** 0.5-1 µg/ml**Other Applications:** user-optimized**Species Reactivity:** Human and mouse. This product has not yet been tested with other species.**Reconstitution:**

Reconstitute the lyophilized powder with deionized water (or equivalent) to an antibody concentration of 0.5 mg/ml.

**Storage:**

The antibody is stable in lyophilized form if stored at -20°C or below. The reconstituted antibody can be stored for 2-3 weeks at 2-8°C. For long term storage, aliquot and store at -20°C or below. Avoid repeated freezing and thawing cycles.



Western blot analysis of cell and tissue lysates using 1  $\mu$ g/ml Rabbit Anti-PGP9.5 Polyclonal Antibody (GenScript, A01398). The signal was developed with IRDye™ 800 Conjugated Goat Anti-Rabbit IgG.  
Predicted Size: 25 KD  
Observed Size: 25 KD