

**GFAP Antibody, pAb, Rabbit****Cat. No.:** A01309-40**Size:** 40 µg**Synonyms:** Rabbit Anti-GFAP pAb;**Description:**

GFAP (Glial fibrillary acidic protein) is a member of intermediate filament (IF) protein family which consists mainly of cytokeratin, GFAP, desmin, and vimentin. Like other IF proteins, GFAP is composed of an amino terminal head domain, a central rod domain, and a carboxyl terminal tail domain. The amino terminal region of GFAP shares considerable sequence divergence with other IF proteins, and probably participates in mediation of the tissue specific functions. GFAP intermediate filament serves as a useful marker of astroglia in the brain since it is specifically expressed in astrocytes and certain other astroglia. This protein may be required for communications between Bergmann glia and Purkinje cells during long-term depression induction and maintenance.

GenScript **Rabbit Anti-GFAP Polyclonal Antibody** is developed in rabbit using a synthetic KLH-coupled peptide from within 250-300 of human GFAP (Swiss Prot: P14136).

**Immunogen:** KLH-coupled peptide from within residues 250-300 of human GFAP. (Swiss Prot: P14136)

**Host:** Rabbit**Antigen Synonyms:** Human**Formulation:**

0.5 mg/ml, lyophilized with PBS, pH 7.4, containing 0.02% sodium azide

**Ig Subclass:** Rabbit IgG**Example****Specificity:** GenScript Rabbit Anti-GFAP Polyclonal

Antibody detects endogenous levels of human and rat GFAP. It is predicted to react with sumatran orangutan GFAP protein according to sequence homology.

**Purification:** Immunoaffinity chromatography**Applications:**

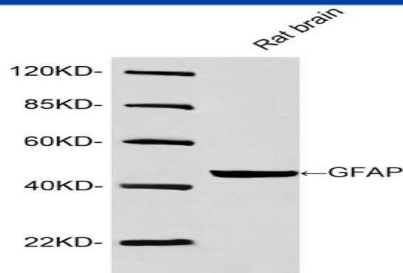
Working concentrations for specific applications should be determined by the investigator. The appropriate concentrations may be affected by secondary antibody affinity, antigen concentration, the sensitivity of the method of detection, temperature, the length of the incubations, and other factors. The suitability of this antibody for applications other than those listed below has not been determined. The following concentration ranges are recommended starting points for this product.

**ELISA:** 0.05-0.2 µg/ml**Western blot:** 0.5-1 µg/ml**Immunohistochemistry:** 5-10 µg/ml**Other Applications:** user-optimized**Species Reactivity:** Human and rat. Reactivity to other species is not tested yet.**Reconstitution:**

Reconstitute the lyophilized powder with deionized water (or equivalent) to an antibody concentration of 0.5 mg/ml.

**Storage:**

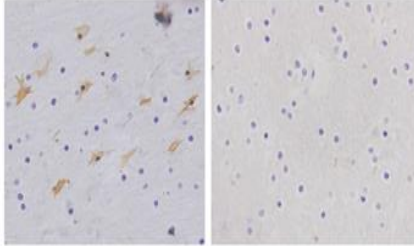
The antibody is stable in lyophilized form if stored at -20°C or below. The reconstituted antibody can be stored for 2-3 weeks at 2-8°C. For long term storage, aliquot and store at -20°C or below. Avoid repeated freezing and thawing cycles.



Western blot analysis of lysates using Rabbit Anti-GFAP Polyclonal Antibody (GenScript, A01309, 1 µg/ml). The signal was developed with IRDye™ 800 Conjugated Goat Anti-Rabbit IgG.

Predicted size: 50 KD

Observed size: 50 KD



Immunohistochemistry analysis of human brain tissue slide (Paraffin embedded) using Rabbit Anti-GFAP Polyclonal Antibody (Left, GenScript, A01309) and Purified Rabbit IgG (Whole molecule) Control (Right, GenScript, A01008).