

## CNPase Antibody, pAb, Rabbit

**Cat. No.:** A01308-40

**Size:** 40 µg

**Synonyms:** CNP antibody;

### Description:

CNPase (2, 3-cyclic nucleotide 3-phosphodiesterase) is a membrane-bound enzyme that can link tubulin to membranes and may regulate cytoplasmic microtubule distribution. The enzyme itself exists in two forms due to alternative splicing and is abundantly present in brain and peripheral nerve. CNPase has been very useful as a marker for these particular cell types including oligodendrocytes and Schwann cells. Expression of CNPase may be severely reduced in many diseases such as multiple sclerosis.

GenScript **Rabbit Anti-CNPase Polyclonal Antibody** is developed in rabbit using a synthetic KLH-coupled peptide from within carboxyl terminus of human CNPase (Swiss Prot: P09543).

**Immunogen:** KLH-coupled synthetic peptide from within carboxyl terminus of human CNPase (Swiss Prot: P09543).

**Host:** Rabbit

**Antigen Synonyms:** Human

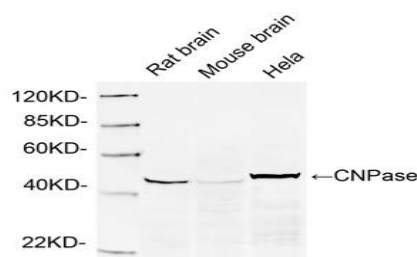
**Conjugation:** Unconjugated

### Formulation:

0.5 mg/ml, lyophilized with PBS, pH 7.4, containing 0.02% sodium azide.

**Ig Subclass:** Rabbit IgG

### Example



**Specificity:** GenScript Rabbit Anti-CNPase Polyclonal Antibody detects endogenous levels of Human mouse and rat CNPase.

**Purification:** Immunoaffinity chromatography

### Applications:

Working concentrations for specific applications should be determined by the investigator. The appropriate concentrations may be affected by secondary antibody affinity, antigen concentration, the sensitivity of the method of detection, temperature, the length of the incubations, and other factors. The suitability of this antibody for applications other than those listed below has not been determined. The following concentration ranges are recommended starting points for this product.

**ELISA:** 0.05-0.2 µg/ml

**Western blot:** 0.5-1 µg/ml

**Other Applications:** user-optimized

**Species Reactivity:** Human, mouse, and rat. Reactivity to other species has not been tested yet.

### Reconstitution:

Reconstitute the lyophilized powder with deionized water (or equivalent) to an antibody concentration of 0.5 mg/ml.

### Storage:

The antibody is stable in lyophilized form if stored at -20°C or below. The reconstituted antibody can be stored for 2-3 weeks at 2-8°C. For long term storage, aliquot and store at -20°C or below. Avoid repeated freezing and thawing cycles.

Western blot analysis of lysates using 1 µg/ml Rabbit Anti-CNPase Polyclonal Antibody (GenScript, A01308)

The signal was developed with IRDye™ 800 Conjugated Goat Anti-Rabbit IgG.