

**Rab5 Antibody, pAb, Rabbit****Cat. No.:** A01302-40**Size:** 40 µg**Synonyms:** Rabbit Anti-Rab5 pAb;**Description:**

Small GTPase Rab5 is a member of Rab family which binds to GTP and exhibits GTPase activity. Rab5 protein is a rate-limiting component of the machinery regulating the kinetics of membrane traffic in the early endocytic pathway. Rabaptin-5 serves as an effector of Rab5 and mediates the tuberin association with Rab5. RNTRE protein whose activity is regulated by EGFR activates Rab5 GTPase. RNTRE acts on Rab5 and inhibits EGFRs internalization. The ALS2 protein specifically binds to Rab5 and functions as a guanine nucleotide exchange factor (GEF) for Rab5. As a key regulator of endocytosis, signal transduction, and mitogenesis, Rab5 protein is also a signaling GTPase that elucidates the major molecular elements of its downstream pathway.

GenScript **Rabbit Anti-Rab5 Polyclonal Antibody** is developed in rabbit using a KLH-coupled synthetic peptide from within residues 150-200 of human Rab5 protein (Swiss Prot: P20339).

**Immunogen:** KLH-coupled synthetic peptide from within residues 150-200 of human Rab5 protein (Swiss Prot: P20339).

**Host:** Rabbit**Antigen Synonyms:** Human**Conjugation:** Unconjugated**Predicated Band Size:**

24 kD

**Observed Band Size:****Example**

24 kD

**Formulation:**

0.5 mg/ml, lyophilized with PBS, pH 7.4, containing 0.02% sodium azide

**Ig Subclass:** Rabbit IgG**Specificity:** GenScript Rabbit Anti-Rab5 Polyclonal Antibody detects endogenous levels of human, mouse and rat Rab5 protein.**Purification:** Immunoaffinity chromatography**Applications:**

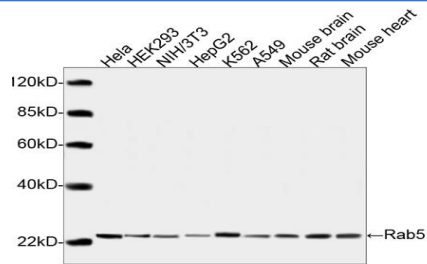
Working concentrations for specific applications should be determined by the investigator. The appropriate concentrations may be affected by secondary antibody affinity, antigen concentration, the sensitivity of the method of detection, temperature, the length of the incubations, and other factors. The suitability of this antibody for applications other than those listed below has not been determined. The following concentration ranges are recommended starting points for this product.

**ELISA:** 0.05-0.2 µg/ml**Western blot:** 0.5-1 µg/ml**Other applications:** user-optimized**Species Reactivity:** Human, mouse and rat**Reconstitution:**

Reconstitute the lyophilized powder with deionized water (or equivalent) to an final concentration of 0.5 mg/ml.

**Storage:**

The antibody is stable in lyophilized form if stored at -20°C or below. The reconstituted antibody can be stored for 2-3 weeks at 2-8°C. For long term storage, aliquot and store at -20°C or below. Avoid repeated freezing and thawing cycles.



Western blot analysis of cell and tissue lysates using Rab5 Antibody, pAb, Rabbit (GenScript, A01302, 1  $\mu$ g/ml)  
The signal was developed with IRDye™ 800 Conjugated Goat Anti-Rabbit IgG.  
Predicted Size: 24 kD  
Observed Size: 24 kD