

**Calbindin Antibody, pAb, Rabbit****Cat. No.:** A01268-40**Size:** 40 µg**Synonyms:** Rabbit Anti-Calbindin Polyclonal Antibody;**Description:**

Calbindin is a calcium-binding protein belonging to the troponin C superfamily. It was originally described as a 27 kD protein induced by vitamin D in the duodenum of young birds. In the brain, its synthesis is independent of vitamin-D-derived hormones. Calbindin contains four active calcium-binding domains and two modified domains that presumably have lost their calcium-binding capacity. The neurons in the brains of patients with Huntington's disease are calbindin-depleted.

GenScript **Rabbit Anti-Calbindin Polyclonal Antibody** is developed in rabbit using a KLH-coupled synthetic peptide from residues 150-200 of human calbindin protein (Swiss Prot: P05937).

**Immunogen:** KLH-coupled synthetic peptide from residues 150-200 of human calbindin protein (Swiss Prot: P05937)

**Host:** Rabbit**Antigen Synonyms:** Human**Conjugation:** Unconjugated**Formulation:**

0.5 mg/ml, lyophilized with PBS, pH 7.4, containing 0.02% sodium azide

**Ig Subclass:** Rabbit IgG**Specificity:** GenScript Rabbit Anti-Calbindin Polyclonal

Antibody detects human calbindin protein. Sequence homology predicts that it will also react with mouse and rat calbindin.

**Purification:** Immunoaffinity chromatography**Applications:**

Working concentrations for specific applications should be determined by the investigator. The appropriate concentrations may be affected by secondary antibody affinity, antigen concentration, the sensitivity of the method of detection, temperature, the length of the incubations, and other factors. The suitability of this antibody for applications other than those listed below has not been determined. The following concentration ranges are recommended starting points for this product.

**ELISA:** 0.05-0.2 µg/ml**Western blot:** 0.5-1 µg/ml**IHC:** 5-10 µg/ml**Other applications:** user-optimized

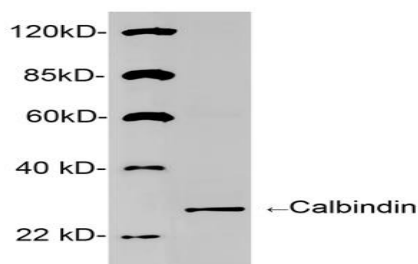
**Species Reactivity:** Human. This product has not yet been tested with other species.

**Reconstitution:**

Reconstitute the lyophilized powder with deionized water (or equivalent) to an antibody concentration of 0.5 mg/ml.

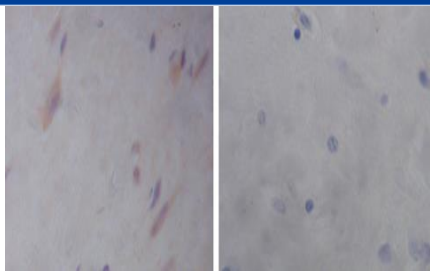
**Storage:**

The antibody is stable in lyophilized form if stored at -20°C or below. The reconstituted antibody can be stored for 2-3 weeks at 2-8°C. For long term storage, aliquot and store at -20°C or below. Avoid repeated freezing and thawing cycles.

**Example**

Western blot analysis of recombinant human Calbindin using 1 µg/ml Rabbit Anti-Calbindin Polyclonal Antibody (GenScript, A01268)

The signal was developed with IRDye™ 800 Conjugated Goat Anti-Rabbit IgG.



Immunohistochemistry analysis of human brain tissue slide (Paraffin embedded) using Rabbit Anti-Calbindin Polyclonal Antibody (Left, GenScript, A01268) and Purified Rabbit IgG (whole molecule) Control (Right, GenScript, A01008)