

## ERAB Antibody, pAb, Rabbit

**Cat. No.:** A01095-40

**Size:** 40 µg

**Synonyms:** Rabbit Anti-ERAB pAb;

### Description:

ERAB is one member of the short-chain dehydrogenase/reductase superfamily. As a mitochondrial enzyme that acts on a wide spectrum of substrates, including steroids, alcohols, and fatty acids, it interacts with a preference with short-chain methyl-branched acyl-CoAs. ERAB have been implicated in the pathogenesis of Alzheimer disease (AD). It is expressed in normal tissues but is overexpressed in affected neurons in AD.

GenScript **ERAB Antibody, pAb, Rabbit** is developed in rabbit using a KLH-coupled synthetic peptide from within 100-150 of human ERAB. (Swiss Prot: Q99714).

**Immunogen:** KLH-coupled synthetic peptide from within residues 100-150 of human ERAB (Swiss Prot: Q99714).

**Host:** Rabbit

**Antigen Synonyms:** Human

**Conjugation:** Unconjugated

### Formulation:

0.5 mg/ml, lyophilized with PBS, pH 7.4, containing 0.02% sodium azide

**Ig Subclass:** Rabbit IgG

**Specificity:** GenScript ERAB Antibody, pAb, Rabbit detects

endogenous levels of human ERAB protein.

**Purification:** Immunoaffinity chromatography

### Applications:

Working concentrations for specific applications should be determined by the investigator. The appropriate concentrations may be affected by secondary antibody affinity, antigen concentration, the sensitivity of the method of detection, temperature, the length of the incubations, and other factors. The suitability of this antibody for applications other than those listed below has not been determined. The following concentration ranges are recommended starting points for this product.

**ELISA:** 0.05-0.2 µg/ml

**Western blot:** 0.5-1 µg/ml

**Flow cytometry:** 1-3 µg for 1 x 10<sup>6</sup> cells

**Other Applications:** user-optimized

**Species Reactivity:** Human. This product has not been tested with other species yet.

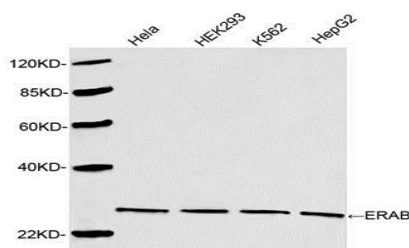
### Reconstitution:

Reconstitute the lyophilized powder with deionized water (or equivalent) to an antibody concentration of 0.5 mg/ml.

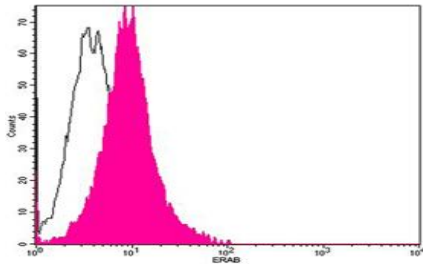
### Storage:

The antibody is stable in lyophilized form if stored at -20°C or below. The reconstituted antibody can be stored for 2-3 weeks at 2-8°C. For long term storage, aliquot and store at -20°C or below. Avoid repeated freezing and thawing cycles.

### Example



Western blot analysis of cell lysates using 1 µg/ml ERAB Antibody, pAb, Rabbit (GenScript, A01095). The signal was developed with IRDye™ 800 Conjugated Goat Anti-Rabbit IgG. Predicted Size: 27 KD. Observed Size: 27 KD.



Flow cytometric analysis of Ramos cells using ERAB Antibody, pAb, Rabbit (GenScript, A01095; shaded histogram) or with an isotype control antibody (GenScript, A01008; open histogram), followed by R-PE conjugated anti-rabbit IgG.