

APH1 Antibody, pAb, Rabbit**Cat. No.:** A00884-40**Size:** 40 µg**Synonyms:** Rabbit anti-APH1 pAb;**Description:**

Anterior Pharynx-Defective 1 (APH1), in addition to presenilin, PEN2, and Nicastrin forms the γ -secretase protein complex. APH1 probably represents a stabilizing cofactor for the presenilin homodimer that promotes the formation of a stable complex. The γ -secretase complex can cleave the beta-amyloid (A4) precursor protein and yields amyloid beta peptide, the main component of the neuritic plaque and the hallmark lesion in the brains of patients with Alzheimer's disease. Three mammalian homologues of APH1 have been identified: APH1a, APH1b, and APH1c, of which APH1a is more abundantly expressed than APH1b in human tissue samples. In addition, two isoforms of APH1a can be generated from alternative splicing of APH-1a, APH1a long form (APH1aL) and APH1a short form (APH1aS) that diverge at the C-terminus. APH1a is the major mammalian APH1 isoform required for Notch signaling during embryogenesis and the major APH1 isoform required for the assembly of the γ -secretase complexes and APP processing.

GenScript **Rabbit Anti-APH1 Polyclonal Antibody** is developed in rabbit using a synthetic peptide, RRQEDSRVMVYSALRIPPED, corresponding to amino acids 246-265 of the C-terminus of human APH1a.

GenScript Rabbit Anti-APH1 Polyclonal Antibody is highly purified from rabbit antiserum by immunoaffinity chromatography and is supplied as a 40 µg aliquot at a concentration of 0.5 mg/ml.

Immunogen: Synthetic peptide corresponding to amino

acids 246-265 (RRQEDSRVMVYSALRIPPED) of the C-terminus of human APH-1a conjugated to KLH

Host: Rabbit**Antigen Synonyms:** Human**Conjugation:** Unconjugated**Formulation:**

0.5 mg/ml in PBS, pH 7.4, containing 30% glycerol, and 0.02% sodium azide

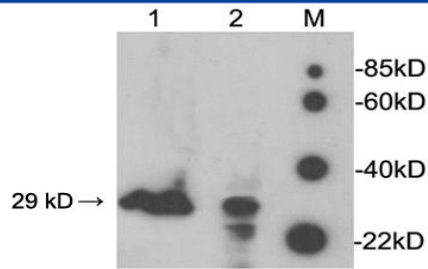
Ig Subclass: Rabbit IgG**Specificity:** GenScript Rabbit Anti-APH1 Polyclonal Antibody can detect endogenous levels of human and mouse APH1a.**Purification:** Immunoaffinity chromatography**Applications:**

Working concentrations for specific applications should be determined by the investigator. Appropriate concentrations will be affected by several factors, including secondary antibody affinity, antigen concentration, sensitivity of detection method, temperature, and length of incubations, etc. The suitability of this antibody for applications other than those listed below has not been determined. The following concentration ranges are recommended starting points for this product.

ELISA: 0.05-0.2 µg/ml**Western blot:** 0.5-2.0 µg/ml**Other applications:** user-optimized**Species Reactivity:** Human, mouse**Storage:**

The antibody is stable for 2-3 weeks if stored at 2-8°C. For long term storage, aliquot and store at -20°C or below. Avoid repeated freezing and thawing cycles.

Example

**Western blot analysis:**

Lane 1: Mouse liver tissue lysate

Lane 2: HeLa cell lysate

Primary antibody: 2 µg/ml Rabbit Anti-APH1 Polyclonal Antibody (GenScript, A00884)

Secondary antibody: Goat Anti-Rabbit IgG (H&L) [HRP] Polyclonal Antibody (GenScript, A00098, 1:5,000)

The signal was developed with LumiSensor™ HRP Substrate Kit (GenScript, L00221V500)