

PEN2 Antibody, pAb, Rabbit

Cat. No.: A00882-40

Size: 40 µg

Synonyms: Rabbit Anti-PEN2 pAb;

Description:

Presenilin enhancer protein 2 (PEN2) is a 101-amino acid protein that traverses the membrane twice and it is the regulatory component of the multimeric gamma-secretase complex which also consists of presenilin, APH-1 and Nicastrin. The gamma-secretase complex catalyzes the cleavage of a number of integral membrane proteins including beta-amyloid precursor protein (APP), Notch protein, Erb4 and E-cadherin. The gamma-secretase complex cleaves the APP yielding amyloid beta peptide, which is the main component of the neuritic plaque and the hallmark lesion in the brains of patients with Alzheimer's disease. In addition, PEN2 is required for end proteolysis of presenilin and activation of the gamma-secretase.

GenScript **Rabbit Anti-PEN2 Polyclonal Antibody** is developed in rabbit using a KLH-coupled synthetic peptide derived from human PEN2.

Immunogen: Synthetic peptide (KLH-conjugated) corresponding to human PEN2

Host: Rabbit

Antigen Synonyms: Human

Conjugation: Unconjugated

Formulation:

0.5 mg/ml in PBS, pH 7.4, containing 30% glycerol and 0.02% sodium azide

Ig Subclass: Rabbit IgG

Specificity: GenScript Rabbit Anti-PEN2 Polyclonal Antibody can be used to detect human PEN2. It is predicted to react with mouse, rat and bovine PEN2 according to sequence homology.

Purification: Immunoaffinity chromatography

Applications:

Working concentrations for specific applications should be determined by the investigator. The appropriate concentrations may be affected by secondary antibody affinity, antigen concentration, the sensitivity of the method of detection, temperature, the length of the incubations, and other factors. The suitability of this antibody for applications other than those listed below has not been determined. The following concentration ranges are recommended starting points for this product.

ELISA: 0.05-0.2 µg/ml

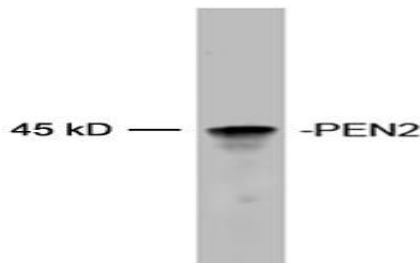
Western blot: 1-2 µg/ml

Other applications: user-optimized

Storage:

The antibody is stable for 2-3 weeks if stored at 2-8°C. For long term storage, aliquot and store at -20°C or below. Avoid repeated freezing and thawing cycles.

Example



Western blot analysis of recombinant Human PEN2 protein. Primary antibody: 2 µg/ml Rabbit Anti-PEN2 Polyclonal Antibody (GenScript, A00882). The signal was developed with IRDye™ 800 Conjugated Goat Anti-Rabbit IgG.