

BACE1 Antibody (485-501), pAb, Rabbit

Cat. No.: A00880-40

Size: 40 µg

Synonyms: Rabbit Anti-BACE1 (485-501) pAb;

Description:

β-secretase, also called BACE (β-site of APP cleaving enzyme), is an aspartic-acid protease important in the pathogenesis of Alzheimers disease, and in the formation of myelin sheaths in peripheral nerve cells. BACE1, also known as memapsin-2, is the major β-secretase for generation of the 40 or 42 amino acid-long β-amyloid peptides that aggregate in the brain of Alzheimers patients. Extracellular cleavage of APP by BACE1 releases a soluble extracellular fragment and is followed by APP cleavage within its transmembrane domain by γ-secretase. The second cleavage releases the intracellular domain of APP and β-amyloid.

The immature form of BACE1 contains an N-terminal signal sequence (residues 1-21) followed by a large catalytic domain, a single transmembrane domain (residues 461-477), and a short cytoplasmic domain (residues 478-501). The signal sequence (1-21) is cleaved from the immature form, yielding the proBACE1 protein, which starts at residue 22. The proBACE1 protein is modified by cleavage of 24 N-terminal residues (aa 22-45), producing the mature BACE1 protein.

GenScript Rabbit Anti-BACE1 (485-501) Polyclonal

Antibody is developed in rabbit using a synthetic peptide, CLRQQHDDFADDISLLK, corresponding to amino acids 485-501 at C-terminal of human BACE1.

Rabbit Anti-BACE1 (485-501) pAb is highly purified from rabbit antiserum by immunoaffinity chromatography and is supplied as 40 µg aliquots at concentration of 0.5 mg/ml.

Immunogen: A synthetic peptide (KLH conjugated), CLRQQHDDFADDISLLK, corresponding to amino acids 485-

501 at C-terminal of human BACE1

Host: Rabbit

Antigen Synonyms: Human

Conjugation: Unconjugated

Formulation:

0.5 mg/ml in PBS, pH 7.4, containing 30% glycerol, and 0.02% sodium azide

Ig Subclass: Rabbit IgG

Specificity: GenScript Rabbit Anti-BACE1 (485-501)

Polyclonal Antibody can specifically detect human BACE1.

Sequence homology predicts that it will also react with mouse, rat, and bovine BACE1.

Purification: Immunoaffinity chromatography

Applications:

Working concentrations for specific applications should be determined by the investigator. The appropriate concentrations may be affected by secondary antibody affinity, antigen concentration, the sensitivity of the method of detection, temperature, the length of the incubations, and other factors. The suitability of this antibody for applications other than those listed below has not been determined. The following concentration ranges are recommended starting points for this product.

ELISA: 0.05-0.2 µg/ml

Western blot: 0.1-1 µg/ml

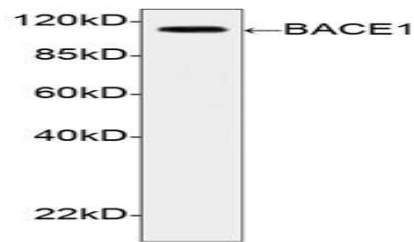
Other applications: user-optimized

Species Reactivity: Human

Storage:

The antibody is stable for 2-3 weeks if stored at 2-8°C. For long term storage, aliquot and store at -20°C or below. Avoid repeated freezing and thawing cycles.

Example



Western blot analysis of human recombinant BACE1 fusion protein using BACE1 Antibody (485-501), pAb, Rabbit (GenScript, A00880, 1 μ g/ml)
The signal was developed with Goat Anti-Rabbit IgG (H&L) [HRP] Polyclonal Antibody (GenScript, A00098) and LumiSensor™ HRP Substrate Kit (GenScript, L00221)
Predicted Size: 107 kD
Observed Size: 107 kD