

ABCA1 Antibody, mAb, Mouse

Cat. No.: A00121

Size: 100 µg

Synonyms: Mouse Anti-ABCA1 mAb; Anti ABCA1

Description:

This membrane-associated protein is a member of the superfamily of ATP-binding cassette (ABC) transporters. ABC proteins transport various molecules across extracellular and intracellular membranes. ABC genes are divided into seven distinct subfamilies (ABC1, MDR/TAP, MRP, ALD, OABP, GCN20, White). This protein is a member of the ABC1 subfamily. Members of the ABC1 subfamily comprise the only major ABC subfamily found exclusively in multicellular eukaryotes. This protein functions as a cholesterol efflux pump in the cellular lipid removal pathway. Mutations in this gene have been associated with Tangiers disease and familial high-density lipoprotein deficiency.

Immunogen: Recombinant fragment, corresponding to amino acids 1800-2260 of Human ABCA1

Host: Mouse

Antigen Synonyms: Human

Conjugation: Unconjugated

Formulation:

1 mg/ml in PBS, pH 7.4 with 0.05% sodium azide, frozen liquid

Clone: A00121.01

Ig Subclass: Mouse monoclonal IgG1

Specificity: Recognize specifically ABCA1 from human, mouse, and chicken

Purification: Immunoaffinity purification

Applications:

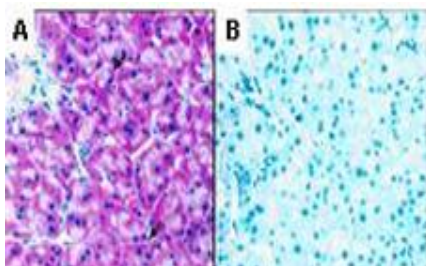
Starting concentration for WB and ELISA are 1:1000, for IP and IHC are 1:100. This antibody has been tested with direct ELISA, where a 96-well plate was coated with recombinant ABCA1 C-terminal protein. The antibody was then added to the wells and a goat anti-mouse IgG HRP conjugate was used for colour development. For ABCA1 quantification, a pair of anti-ABCA1 antibodies should be used to formulate a Sandwich ELISA and with a presence of an ABCA1 protein Standard. Optimal dilution to be determined by the end user.

Species Reactivity: Human, mouse, and chicken

Storage:

The antibody will remain stable for 1 year from the date of shipment if stored at -20°C. For maximum recovery of product, centrifuge the original vial after thawing and prior to removing the cap. Aliquot to avoid repeated freezing and thawing. Aliquots will remain for three months if stored at 4°C.

Example

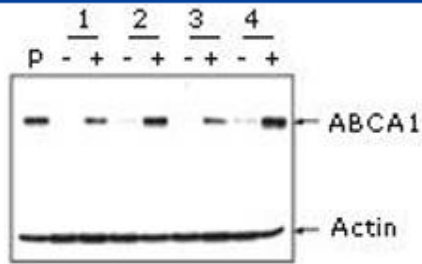


Immunoreactivity of ABCA1 in adipose and pancreas tissue for ABCA1 protein.

A. Strong immunopositivity of exocrine glandular cells of the pancreas, especially in the basal region (arrows).

Interstitial microvascular cells are apparently negative. Cells within the islet were weakly positive (data not shown).

B. The negative control for Panel A. Original magnification: 330; hematoxylin counterstain.



Western blot analysis of ABCA1 induction by cholesterol (+) in human fibroblast cells from different patients (1, 2, 3, 4). Simultaneous blotting with anti-actin antibody was used for protein loading control.