



Catalog Number GTX111168 **Package:**25 µl, 100 µl

Proclin

Product Name alpha 1 Catenin antibody [N1N3]

Full Name catenin (cadherin-associated protein), alpha 1, 102kDa

Synonyms CAP102 antibody, FLJ36832 antibody, FLJ52416 antibody, CTNNA1 antibody, "cadherin-associated protein,102kDa antibody", alpha-catenin antibody, alphaE-catenin antibody, catenin alpha-1 antibody, renal carcinoma antigen NY-REN-13 antibody, alpha-E-catenin antibody, alpha E-catenin antibody, "catenin (cadherin-associated protein), alpha 1, 102kDa antibody"

Product Description Rabbit Polyclonal antibody to alpha 1 Catenin (catenin (cadherin-associated protein), alpha 1, 102kDa)

Background Associates with the cytoplasmic domain of a variety of cadherins. The association of catenins to cadherins produces a complex which is linked to the actin filament network, and which seems to be of primary importance for cadherins cell-adhesion properties. Can associate with both E- and N-cadherins. Originally believed to be a stable component of E-cadherin/catenin adhesion complexes and to mediate the linkage of cadherins to the actin cytoskeleton at adherens junctions. In contrast, cortical actin was found to be much more dynamic than E-cadherin/catenin complexes and CTNNA1 was shown not to bind to F-actin when assembled in the complex suggesting a different linkage between actin and adherence junctions components. The homodimeric form may regulate actin filament assembly and inhibit actin branching by competing with the Arp2/3 complex for binding to actin filaments. May play a crucial role in cell differentiation.

Host Rabbit

Clonality Polyclonal

Isotype IgG

Immunogen Recombinant protein encompassing a sequence within the N-terminus region of human alpha 1 Catenin. The exact sequence is proprietary.

Antigen Species Human

Species Reactivity Human, Mouse

Predicted Cross Reactivity species Rhesus Monkey

Predict Reactivity Note Rhesus Monkey (100%)

Applications ICC/IF, IHC-P, IP, WB

Application Note

| | Suggested dilution | Protocol | Reference |
|---|--------------------|----------|-----------|
| ICC/IF | 1:100-1:1000* | | |
| IHC (Formalin-fixed paraffin-embedded sections) | 1:100-1:1000* | | |
| Immunoprecipitation | 1:100-1:500* | | |
| Western blot | 1:500-1:3000* | | |

Not tested in other applications.

*Optimal dilutions/concentrations should be determined by the researcher.

Positive Controls A431 , HeLa , HepG2 , mouse brain

Predicted Target Size 100 kDa

Cellular Localization Cytoplasm , cytoskeleton , Cell junction , adherens junction , Cell membrane

Conjugation Unconjugated

Form Supplied Liquid

Purification Purified by antigen-affinity chromatography.

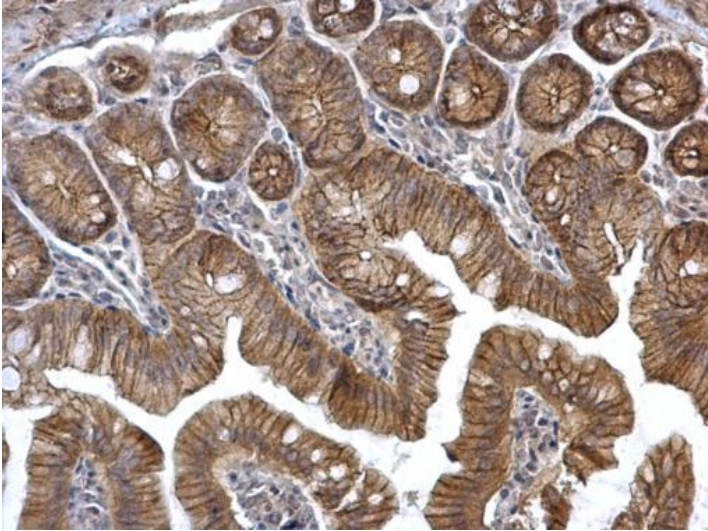
Concentration 0.74 mg/ml

Storage Buffer 1XPBS, 20% Glycerol (pH7). 0.025% ProClin 300 was added as a preservative.

Storage Instruction Keep as concentrated solution. Aliquot and store at -20°C or below. Avoid multiple freeze-thaw cycles.

Notes For *In vitro* laboratory use only. Not for any clinical, therapeutic, or diagnostic use in humans or animals. Not for animal or human consumption.

ResearchArea [Signal Transduction](#) > [ECM/Cytoskeleton](#) > [Cell Adhesion](#)

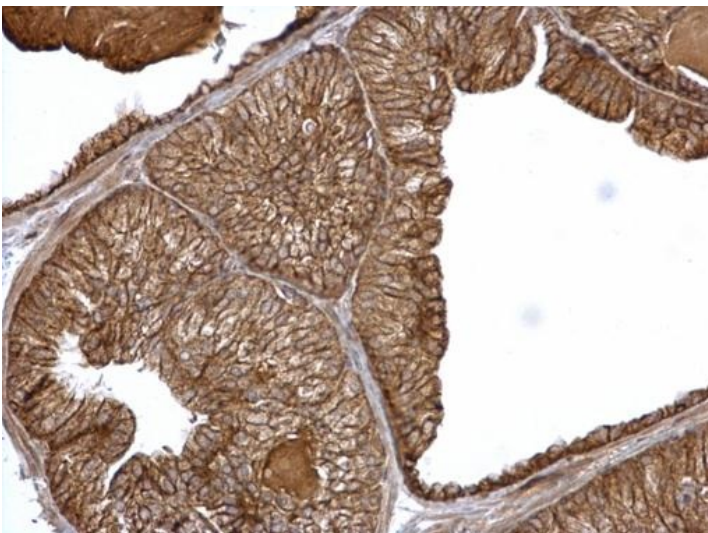


GTX111168 IHC-P Image

alpha 1 Catenin antibody [N1N3] detects alpha 1 Catenin protein at membrane on mouse intestine by immunohistochemical analysis.

Sample: Paraffin-embedded mouse intestine.

alpha 1 Catenin antibody [N1N3] (GTX111168) dilution: 1:500.

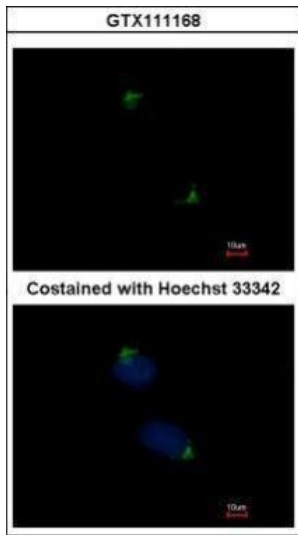


GTX111168 IHC-P Image

alpha 1 Catenin antibody [N1N3] detects alpha 1 Catenin protein at membrane on mouse prostate by immunohistochemical analysis.

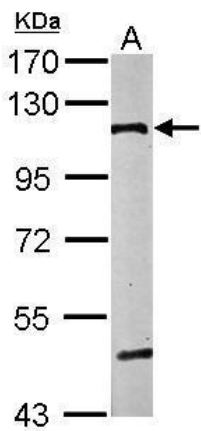
Sample: Paraffin-embedded mouse prostate.

alpha 1 Catenin antibody [N1N3] (GTX111168) dilution: 1:500.



GTX111168 ICC/IF Image

Immunofluorescence analysis of methanol-fixed HeLa, using alpha Catenin(GTX111168) antibody at 1:500 dilution.



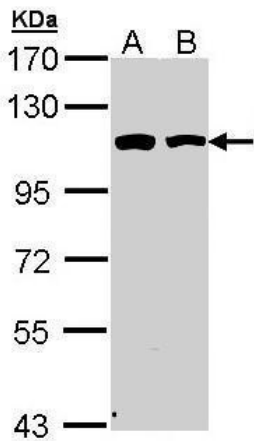
GTX111168 WB Image

Sample (50 ug of whole cell lysate)

A: Mouse brain

7.5% SDS PAGE

GTX111168 diluted at 1:1000



GTX111168 WB Image

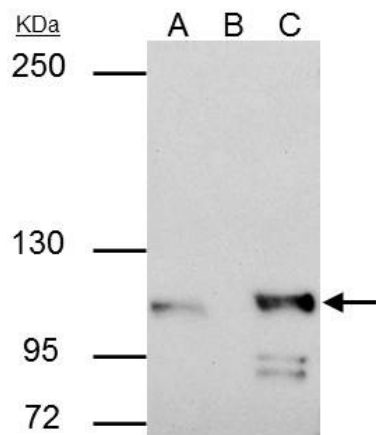
Sample (30 ug of whole cell lysate)

A: A431 (GTX27909)

B: HeLa

7.5% SDS PAGE

GTX111168 diluted at 1:1000



GTX111168 IP Image

alpha 1 Catenin antibody [N1N3] immunoprecipitates CTNNA1 protein in IP experiments.

IP samples: HeLa whole cell extract

A. 30 µg HeLa whole cell extract

B. Control with 4 µg of preimmune Rabbit IgG

C. Immunoprecipitation of CTNNA1 protein by 4 µg alpha 1 Catenin antibody [N1N3] (GTX111168)

5 % SDS-PAGE

The immunoprecipitated CTNNA1 protein was detected by alpha 1 Catenin antibody [N1N3] (GTX111168) diluted at 1:500.

[EasyBlot anti-rabbit IgG (GTX221666-01) was used as a secondary reagent.]