



Catalog Number GTX109827 **Package:**25 µl, 100 µl Proclin

Product Name SMC3 antibody [N1N2], N-term

Full Name structural maintenance of chromosomes 3

Synonyms BAM antibody, BMH antibody, CDLS3 antibody, CSPG6 antibody, HCAP antibody, SMC3L1 antibody, SMC3 antibody, SMC protein 3 antibody, SMC-3 antibody, structural maintenance of chromosomes protein 3 antibody, chromosome-associated polypeptide antibody, chondroitin sulfate proteoglycan 6 (bamacan) antibody, basement membrane-associated chondroitin proteoglycan antibody, structural maintenance of chromosomes 3 antibody

Product Description Rabbit Polyclonal antibody to SMC3 (structural maintenance of chromosomes 3)

Background This gene belongs to the SMC3 subfamily of SMC proteins. The encoded protein occurs in certain cell types as either an intracellular, nuclear protein or a secreted protein. The nuclear form, known as structural maintenance of chromosomes 3, is a component of the multimeric cohesin complex that holds together sister chromatids during mitosis, enabling proper chromosome segregation. Post-translational modification of the encoded protein by the addition of chondroitin sulfate chains gives rise to the secreted proteoglycan bamacan, an abundant basement membrane protein. [provided by RefSeq]

Host Rabbit

Clonality Polyclonal

Immunogen Recombinant fragment corresponding to a region within amino acids 16 and 296 of SMC3 (Uniprot ID#Q9UQE7)

Species Reactivity Human, Mouse

Predicted Cross Reactivity species Rat, Xenopus laevis, Chicken, Bovine

Predict Reactivity Note Rat (100%), Xenopus laevis (100%), Chicken (100%), Bovine (100%)

Applications IP, WB

Application Note	Suggested dilution	Protocol	Reference
Immunoprecipitation	1:100-1:500*		
Western blot	1:500-1:3000*		

Not tested in other applications.

*Optimal dilutions/concentrations should be determined by the researcher.

Positive Controls 293T , A431 , H1299 , HeLa , HepG2 , Molt-4 , Raji , mouse liver

Predicted Target Size 142 kDa

Cellular Localization Nucleus

Form Supplied Liquid

Purification Purified by antigen-affinity chromatography.

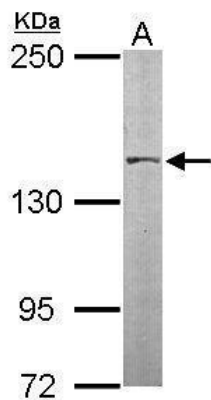
Concentration 1.2 mg/ml

Storage Buffer 1XPBS, 20% Glycerol (pH7). 0.025% proclin was added as a preservative.

Storage Instruction Keep as concentrated solution. Aliquot and store at -20°C or below. Avoid multiple freeze-thaw cycles.

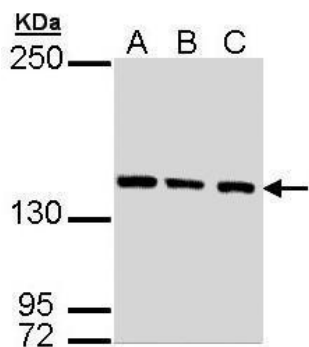
Notes For *In vitro* laboratory use only. Not for any clinical, therapeutic, or diagnostic use in humans or animals. Not for animal or human consumption.

ResearchArea [Cancer](#) > [Cell cycle](#) > [Cell division](#)
[Cell Biology](#) > [Cell cycle](#)
[Disease Related](#) > [Alzheimer's disease](#)



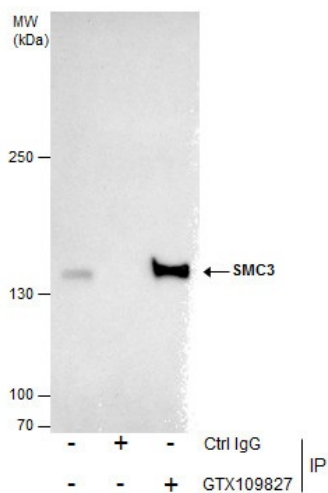
GTX109827_40030_WB_M_Liver.jpg

Sample (50 ug of whole cell lysate)
 A: Mouse liver
 5% SDS PAGE
 GTX109827 diluted at 1:1000



GTX109827_WB.jpg

Sample (30 ug of whole cell lysate)
 A: A431 (GTX27909)
 B: H1299
 C: HeLa
 7.5% SDS PAGE
 GTX109827 diluted at 1:1000



GTX109827 SMC3 antibody [N1N2], N-term IP Image

Immunoprecipitation of SMC3 protein from HeLa whole cell extracts using 5 µg of SMC3 antibody [N1N2], N-term (GTX109827).
 Western blot analysis was performed using SMC3 antibody [N1N2], N-term (GTX109827).
 EasyBlot anti-Rabbit IgG (GTX221666-01) was used as a secondary reagent.

