



**Catalog Number** GTX106483 **Package:**25 µl, 100 µl Proclin

**Product Name** Hemoglobin zeta antibody [N1C3]

**Full Name** hemoglobin, zeta

**Synonyms** HBZ antibody, hemoglobin zeta chain antibody, zeta-globin antibody, HBAZ antibody, hemoglobin subunit zeta antibody, "hemoglobin, zeta antibody"

**Product Description** Rabbit polyclonal antibody to Hemoglobin zeta (hemoglobin, zeta)

**Background** Zeta-globin is an alpha-like hemoglobin. The zeta-globin polypeptide is synthesized in the yolk sac of the early embryo, while alpha-globin is produced throughout fetal and adult life. The zeta-globin gene is a member of the human alpha-globin gene cluster that includes five functional genes and two pseudogenes. The order of genes is: 5' - zeta - pseudozeta - mu - pseudoalpha-1 - alpha-2 - alpha-1 - theta1 - 3'. [provided by RefSeq]

**Host** Rabbit

**Clonality** Polyclonal

**Isotype** IgG

**Target** Hemoglobin zeta

**Immunogen** Recombinant protein encompassing a sequence within the center region of human Hemoglobin zeta. The exact sequence is proprietary.

**Antigen Species** Human

**Species Reactivity** Human

**Applications** WB

Application Note	Suggested dilution	Protocol	Reference
Western blot	1:5000-1:20000*		

Not tested in other applications.

\*Optimal dilutions/concentrations should be determined by the researcher.

**Positive Controls** K562

**Predicted Target Size** 16 kDa

**Conjugation** Unconjugated

**Form Supplied** Liquid

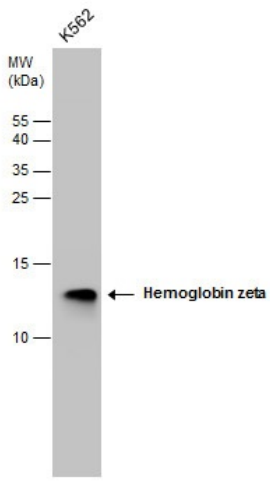
**Purification** Purified by antigen-affinity chromatography.

**Concentration** 0.52 mg/ml

**Storage Buffer** 1XPBS, 20% Glycerol (pH7). 0.025% ProClin 300 was added as a preservative.

**Storage Instruction** Keep as concentrated solution. Aliquot and store at -20°C or below. Avoid multiple freeze-thaw cycles.

**Notes** For *In vitro* laboratory use only. Not for any clinical, therapeutic, or diagnostic use in humans or animals. Not for animal or human consumption.



**GTX106483 WB Image**

Hemoglobin zeta antibody detects Hemoglobin zeta protein by western blot analysis. Whole cell extracts (30 µg) was separated by 15% SDS-PAGE, and the membrane was blotted with Hemoglobin zeta antibody (GTX106483) at a dilution of 1:10000.