



Catalog Number GTX103240 Package:25 µl, 100 µl

Proclin

Product Name alpha Actinin 1 antibody [N2N3]

Full Name actinin, alpha 1

Synonyms FLJ40884 antibody, FLJ54432 antibody, ACTN1 antibody, alpha-actinin-1 antibody, F-actin cross-linking protein antibody, actinin 1 smooth muscle antibody, alpha-actinin cytoskeletal isoform antibody, non-muscle alpha-actinin-1 antibody, "actinin, alpha 1 antibody"

Product Description Rabbit Polyclonal antibody to alpha Actinin 1 (actinin, alpha 1)

Background Alpha actinins belong to the spectrin gene superfamily which represents a diverse group of cytoskeletal proteins, including the alpha and beta spectrins and dystrophins. Alpha actinin is an actin-binding protein with multiple roles in different cell types. In nonmuscle cells, the cytoskeletal isoform is found along microfilament bundles and adherens-type junctions, where it is involved in binding actin to the membrane. In contrast, skeletal, cardiac, and smooth muscle isoforms are localized to the Z-disc and analogous dense bodies, where they help anchor the myofibrillar actin filaments. This gene encodes a nonmuscle, cytoskeletal, alpha actinin isoform and maps to the same site as the structurally similar erythroid beta spectrin gene. Three transcript variants encoding different isoforms have been found for this gene. [provided by RefSeq]

Host Rabbit

Clonality Polyclonal

Immunogen Recombinant protein encompassing a sequence within the center region of human alpha Actinin 1. The exact sequence is proprietary.

Species Reactivity Human, Mouse

Predicted Cross Reactivity species Chicken, Rat, *Xenopus laevis*, Zebrafish, Bovine, *Xenopus tropicalis*

Predict Reactivity Note Chicken (97%), Rat (98%), *Xenopus laevis* (97%), Zebrafish (98%), Bovine (98%), *Xenopus tropicalis* (97%)

Applications IHC-P, WB

Application Note	Suggested dilution	Protocol	Reference
IHC (Formalin-fixed paraffin-embedded sections)	1:100-1:1000*		
Western blot	1:500-1:3000*		

Not tested in other applications.

*Optimal dilutions/concentrations should be determined by the researcher.

Positive Controls 293T, A431, HeLa, HepG2, NIH-3T3

Predicted Target Size 103 kDa

Cellular Localization Cytoplasm, cytoskeleton, myofibril, sarcomere, Z-disk

Form Supplied Liquid

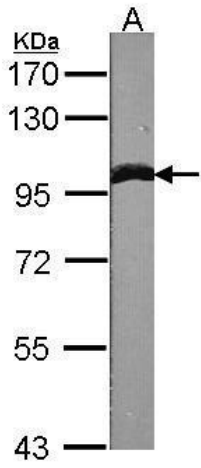
Purification Purified by antigen-affinity chromatography.

Concentration 0.139 mg/ml

Storage Buffer 1XPBS, 20% Glycerol (pH7). 0.025% ProClin 300 was added as a preservative.

Storage Instruction Keep as concentrated solution. Aliquot and store at -20°C or below. Avoid multiple freeze-thaw cycles.

Notes For *In vitro* laboratory use only. Not for any clinical, therapeutic, or diagnostic use in humans or animals. Not for animal or human consumption.



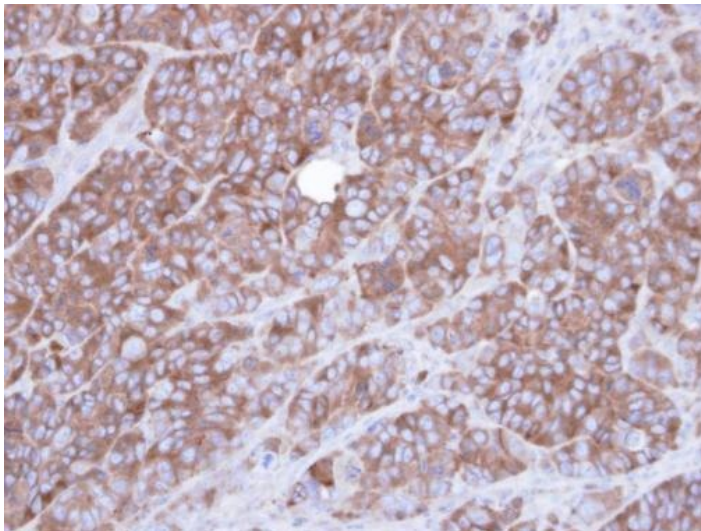
GTX103240 WB Image

Sample (30 ug of whole cell lysate)

A: NIH-3T3

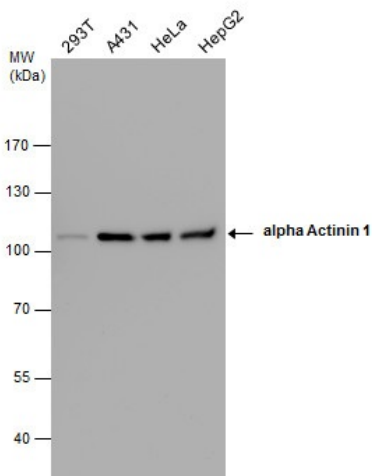
7.5% SDS PAGE

GTX103240 diluted at 1:1000



GTX103240 IHC-P Image

Immunohistochemical analysis of paraffin-embedded SW480 xenograft , using Alpha-actinin 1(GTX103240) antibody at 1:100 dilution.



GTX103240 WB Image

alpha Actinin 1 antibody detects alpha Actinin 1 protein by western blot analysis. Various whole cell extracts (30 µg) were separated by 7.5% SDS-PAGE, and the membrane was blotted with alpha Actinin 1 antibody (GTX103240) diluted at a dilution of 1:1000.