



**Catalog Number** GTX102006 **Package:** 25 µl, 100 µl Proclin

**Product Name** GABARAPL2 antibody

**Full Name** GABA(A) receptor-associated protein-like 2

**Synonyms** ATG8 antibody, ATG8C antibody, GATE-16 antibody, GATE16 antibody, GEF2 antibody, GABARAPL2 antibody, MAP1 light chain 3-related protein antibody, golgi-associated ATPase enhancer of 16 kDa antibody, MAP1 light chain 3 related protein antibody, general protein transport factor p16 antibody, ganglioside expression factor 2 antibody, gamma-aminobutyric acid receptor-associated protein-like 2 antibody, GABA(A) receptor-associated protein-like 2 antibody

**Product Description** Rabbit Polyclonal antibody to GABARAPL2 (GABA(A) receptor-associated protein-like 2)

**Background** Involved in intra-Golgi traffic. Modulates intra-Golgi transport through coupling between NSF activity and SNAREs activation. It first stimulates the ATPase activity of NSF which in turn stimulates the association with GOSR1.

**Host** Rabbit

**Clonality** Polyclonal

**Isotype** IgG

**Immunogen** Recombinant protein encompassing a sequence within the center region of human GABARAPL2. The exact sequence is proprietary.

**Antigen Species** Human

**Species Reactivity** Human

**Predicted Cross Reactivity species** Mouse, Rat, Xenopus laevis, Xenopus Tropicalis, Rhesus Monkey, Bovine

**Predict Reactivity Note** Mouse (100%), Rat (100%), Xenopus laevis (100%), Xenopus Tropicalis (100%), Rhesus Monkey (100%), Bovine (100%)

**Applications** IHC-P, WB

Application Note	Suggested dilution	Protocol	Reference
IHC (Formalin-fixed paraffin-embedded sections)	1:100-1:1000*		
Western blot	1:500-1:3000*		

Not tested in other applications.

\*Optimal dilutions/concentrations should be determined by the researcher.

**Positive Controls** Jurkat , Raji , NCI-H929

**Predicted Target Size** 14 kDa

**Conjugation** Unconjugated

**Form Supplied** Liquid

**Purification** Purified by antigen-affinity chromatography.

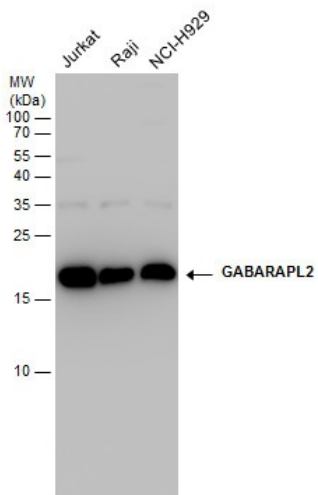
**Concentration** 0.34 mg/ml

**Storage Buffer** 1XPBS, 20% Glycerol (pH7). 0.025% ProClin 300 was added as a preservative.

**Storage Instruction** Keep as concentrated solution. Aliquot and store at -20°C or below. Avoid multiple freeze-thaw cycles.

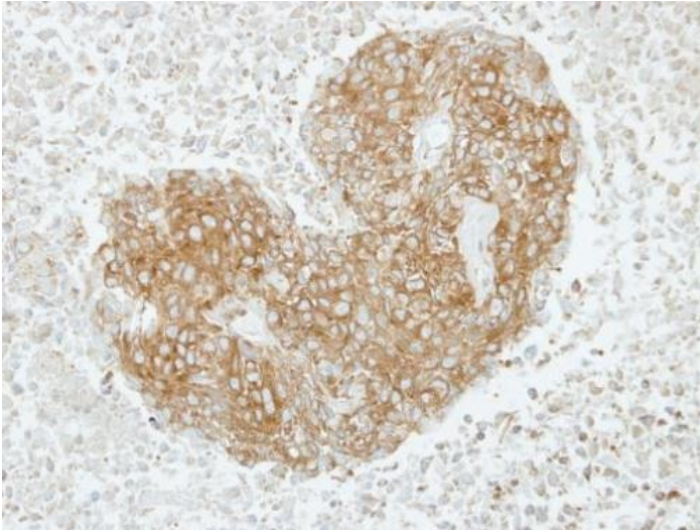
**Notes** For *In vitro* laboratory use only. Not for any clinical, therapeutic, or diagnostic use in humans or animals. Not for animal or human consumption.

**ResearchArea** [Cell Biology](#) > [Autophagy](#)



#### GTX102006 WB Image

GABARAPL2 antibody detects GABARAPL2 protein by western blot analysis. Various whole cell extracts (30  $\mu$ g) were separated by 15% SDS-PAGE, and the membrane was blotted with GABARAPL2 antibody (GTX102006) diluted at a dilution of 1:1500.



#### GTX102006 IHC-P Image

Immunohistochemical analysis of paraffin-embedded SAS xenograft, using GABARAPL2(GTX102006) antibody at 1:100 dilution.