



Catalog Number GTX101782 **Package:**25 µl, 100 µl Proclin

Product Name Sec61 gamma subunit antibody

Full Name Sec61 gamma subunit

Synonyms SSS1 antibody, SEC61G antibody, protein transport protein Sec61 subunit gamma antibody, protein transport protein SEC61 gamma subunit antibody, Sec61 gamma subunit antibody

Product Description Rabbit polyclonal antibody to Sec61 gamma subunit (Sec61 gamma subunit)

Background The Sec61 complex is the central component of the protein translocation apparatus of the endoplasmic reticulum (ER) membrane. Oligomers of the Sec61 complex form a transmembrane channel where proteins are translocated across and integrated into the ER membrane. This complex consists of three membrane proteins- alpha, beta, and gamma. This gene encodes the gamma-subunit protein. Alternatively spliced transcript variants encoding the same protein have been identified. [provided by RefSeq]

Host Rabbit

Clonality Polyclonal

Isotype IgG

Target Sec61 gamma subunit

Immunogen Synthetic peptide corresponding to a region within amino acids 2 and 66 of Sec61 gamma

Antigen Species Human

Species Reactivity Human

Predicted Cross Reactivity species Mouse, Rat, Zebrafish, Dog, Rhesus Monkey, Bovine

Predict Reactivity Note Mouse (100%), Rat (100%), Zebrafish (100%), Dog (100%), Rhesus Monkey (100%), Bovine (100%)

Applications WB

Application Note	Suggested dilution	Protocol	Reference
Western blot	1:500-1:3000*		

Not tested in other applications.

*Optimal dilutions/concentrations should be determined by the researcher.

Positive Controls 293T , A431 , H1299 , HeLa , HepG2 , Molt-4

Predicted Target Size 8 kDa

Cellular Localization Endoplasmic reticulum membrane; Single-pass membrane protein

Form Supplied Liquid

Purification Purified by antigen-affinity chromatography.

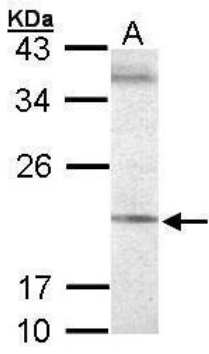
Concentration 1 mg/ml

Storage Buffer 1XPBS, 20% Glycerol (pH7). 0.025% proclin was added as a preservative.

Storage Instruction Keep as concentrated solution. Aliquot and store at -20°C or below. Avoid multiple freeze-thaw cycles.

Notes For *In vitro* laboratory use only. Not for any clinical, therapeutic, or diagnostic use in humans or animals. Not for animal or human consumption.

ResearchArea [Cell Biology](#) > [Protein Trafficking](#)



GTX101782_WB.jpg

Sample (30 ug of whole cell lysate)

A: 293T

12% SDS PAGE

GTX101782 diluted at 1:500